



A000610275

OFFICE OF THE COUNTY RECORDER
CASS COUNTY, MINNESOTA
CERTIFIED, FILED, AND/OR
RECORDED ON

3/19/2015 11:05:01 AM

AS DOC #: A000610275

PAGES: 2

REC FEES: 0.00

KATHRYN M. NORBY
CASS COUNTY RECORDER

BY MW Dep TX#: 121589

Page 1 of 2
A000610275

CERTIFICATE OF LOCATION OF GOVERNMENT CORNER

Index No. J.0-23.0

NORTH QUARTER CORNER of Section 13, Township 139 N., Range 27 W., 5th P.M.

State of Minnesota, County of Cass.

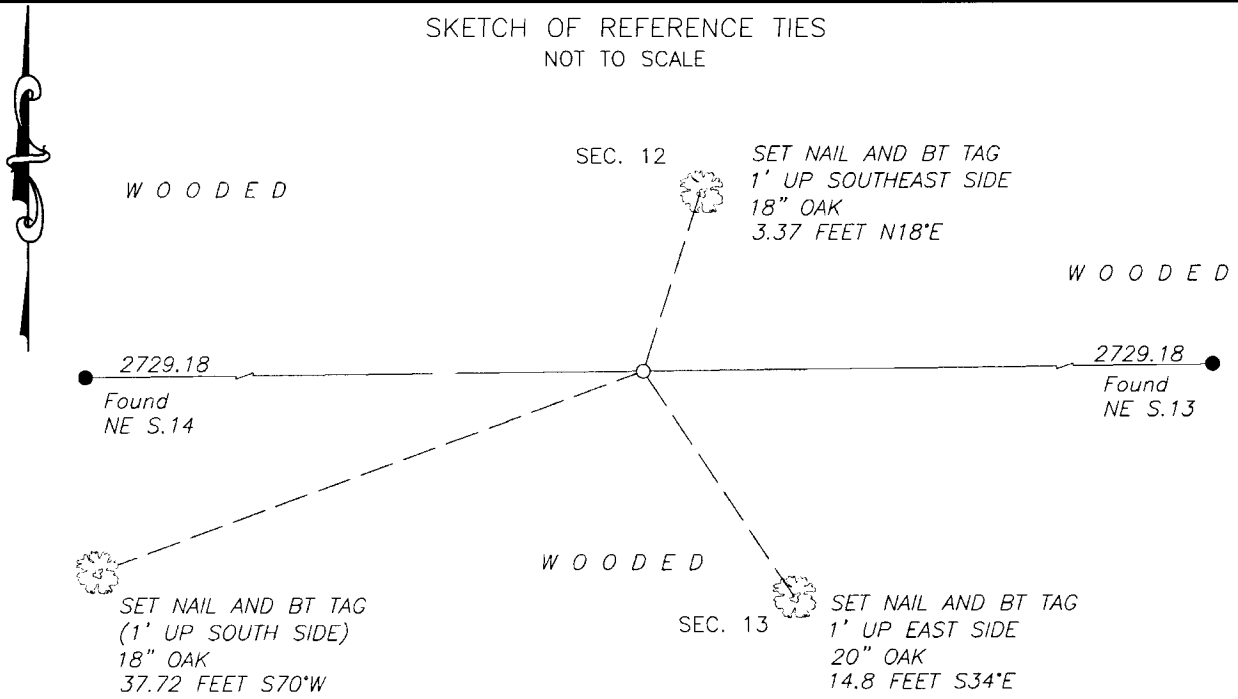
At the corner location shown on the sketch:

On _____ found _____

left monument as found lowered monument removed monument (explain)

On 14 Mar 2014 placed A 1/2" x 24" REBAR WITH RLS CAP MARKED 16459,
AT A SINGLE PROPORTION POSITION.

SKETCH OF REFERENCE TIES
NOT TO SCALE



NOTE:

All Datum is Minnesota State Plane, North Zone

Statement of evidence relative to this corner location is on the back of this page.

I hereby certify that this survey, plan or report was prepared by me or under my direct supervision and that I am a duly Licensed Land Surveyor under the laws of the State of Minnesota.

I further certify that this United States public land survey monument record is correct and complete to the best of my knowledge and belief.

Robert L. Kovanen

Date 3/13/15 MN License No. 16459

**Index No. J.0-23.0**Statement of Evidence**North Quarter corner of Section 13, Township 139 North, Range 27 West, 5th Principal Meridian.**

April 11 1864 G. Johnson and A. Thornton, General Land Office (GLO) Deputy Surveyors, in the subdivision of this township, set a post for the original corner midway on between Section corners at 39.85 chains. The post was referenced with on bearing tree as follows:

10" Blk Ash N 10° E 8 links (5.28 feet)

The original plat and above record are archived with the Minnesota Historical Society, St. Paul, Minnesota, copies are filed with Cass County Highway Department/Surveyor's Office.

March 2014 Northwestern Surveying and Engineering, Inc. (NWSE), Robert Kovanen, LS 16459, reviewed existing information. The Cass County Land Corner Record references only the GLO witness. The Cass County Survey Data Index lists the certified Northeast and Northwest corners of Section 13 and a 1997 Certificate of Survey by Landecker and Assoc., which is not directly relevant to the subject corner. The review found the distance between the recovered certified Northwest and Northeast corners of Section 13 to measure 5458.36 feet (MN State Plane North Zone) as compared to the GLO distance of 5260.2 feet (79.70 chains). This difference possibly indicates the use of a "short cut" method in the original subdivision. A lost position was computed midway and on line between the recovered section corners. An elongated east-west search area was established to ensure coverage at 39.85 chains easterly of the Northwest corner of Section 13.

April 2014 NWSE, crew of Bomstad and Walker-O'Beirne searched for the subject corner with no recovery. A ½ by 18 inch rebar, capped LS 16459 was placed at the lost position described above. The monument, together with the recovered and established references for the position are shown on the face of this document.

Analysis of the recovered record data, field evidence and survey measurements, indicates that the monument established by NWSE in 2014 is the accepted location of this corner.