



A000610274

OFFICE OF THE COUNTY RECORDER
CASS COUNTY, MINNESOTA
CERTIFIED, FILED, AND/OR
RECORDED ON

3/19/2015 11:05:00 AM

AS DOC #: A000610274

PAGES: 2

REC FEES: 0.00

KATHRYN M. NORBY
CASS COUNTY RECORDER

BY MW Dep TX#: 121589

Page 1 of 2
A000610274

Twp 139 Rge 27 Index No. J.0-19.0

CERTIFICATE OF LOCATION OF GOVERNMENT CORNER

North Quarter corner of Section 14, Township 139 N., Range 27 W., 5th P.M.

State of Minnesota, County of Cass.

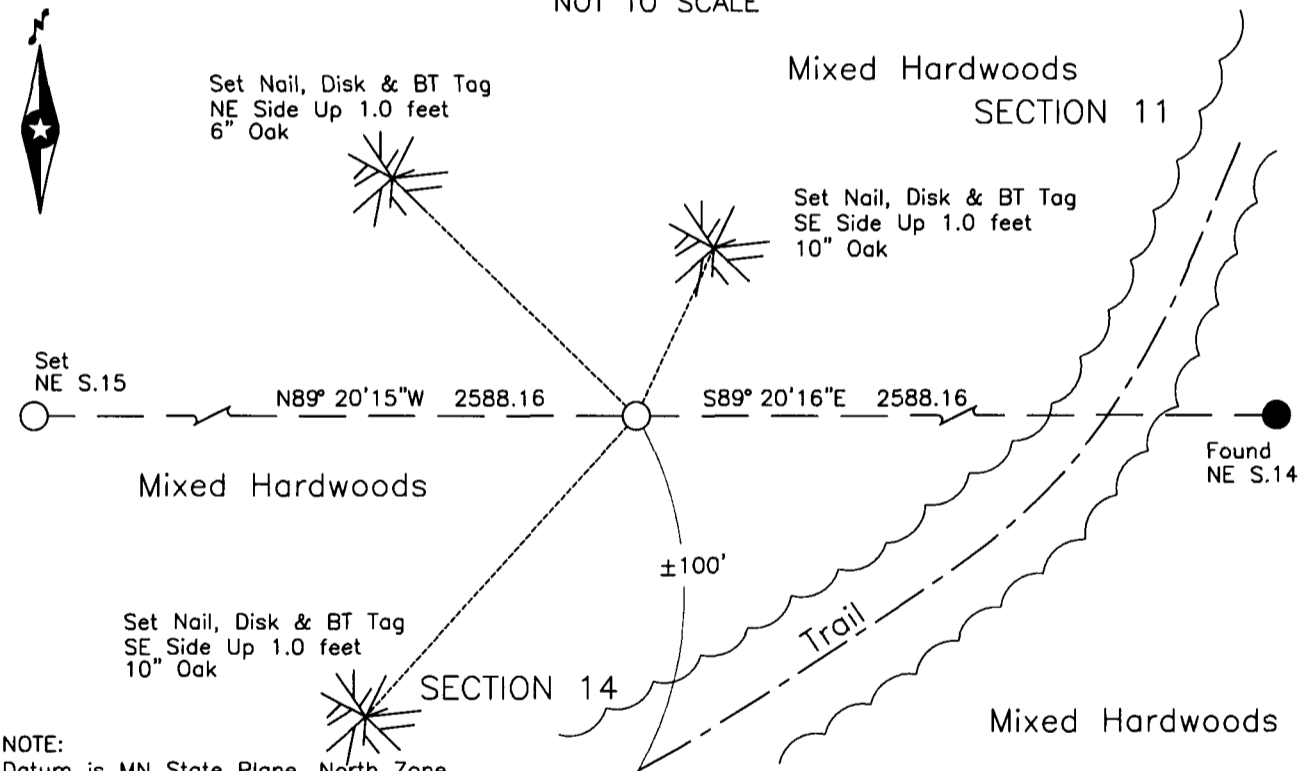
At the corner location shown on the sketch:

On _____ found _____

left monument as found lowered monument removed monument (explain)

On 10 Apr 2014 placed a 1/2" x 18" rebar, RLS No. 16459.

SKETCH OF REFERENCE TIES
NOT TO SCALE



NOTE:
Datum is MN State Plane, North Zone

Statement of evidence relative to this corner location is on the back of this page.

I hereby certify that this survey, plan or report was prepared by me or under my direct supervision and that I am a duly Licensed Land Surveyor under the laws of the State of Minnesota.
I further certify that this United States public land survey monument record is correct and complete to the best of my knowledge and belief.

Robert L. Kovanen

Date 3/13/15 MN License No. 16459



Index No. J.0-19.0

Statement of Evidence

North Quarter corner of Section 14, Township 139 North, Range 27 West, 5th Principal Meridian.

April 23 1864 G. Johnson and A. Thornton, General Land Office (GLO) Deputy Surveyors, in the subdivision of this township, set a post for the original corner and the following accessories were noted:
10" Birch N 12 links (7.92 feet) 7" Birch S 45° W 30 links (19.60 feet)
The original plat and above record are archived with the Minnesota Historical Society, St. Paul, Minnesota, copies are filed with Cass County Highway Department/Surveyor's Office.

Circa 1985 Cass County Land Corner Record lists only the GLO information.

Nov. 2013 Northwestern Surveying and Engineering, Inc. (NWSE), crew of Bomstad and Walker-O'Beirne searched for the subject corner with no recovery.

April NWSE, Robert Kovanen, LS 16459, reviewed the existing information and computed a lost position based on recovered and established monuments.

April 2014 Northwestern Surveying and Engineering, Inc. (NWSE), crew of Bomstad and Walker-O'Beirne made an additional search and with no recovery and confirmation with Robert Kovanen, placed a ½ by 18 inch rebar, capped LS 16459 at the position described above. The monument, together with the recovered and established references for the position is shown on the face of this document.

Analysis of the recovered record data, field evidence and survey measurements, indicates that the monument established by NWSE in 2014 is the accepted location of this corner.