



A000610273

OFFICE OF THE COUNTY RECORDER
CASS COUNTY, MINNESOTA
CERTIFIED, FILED, AND/OR
RECORDED ON

3/19/2015 11:04:59 AM

AS DOC #: A000610273

PAGES: 2

REC FEES: 0.00

KATHRYN M. NORBY
CASS COUNTY RECORDER

BY MW Dep TX#: 121589

Page 1 of 2
A000610273

Twp 139 Rge 27 Index No. J.0-17.0

CERTIFICATE OF LOCATION OF GOVERNMENT CORNER

Northeast corner of Section 15, Township 139 N., Range 27 W., 5th P.M.
State of Minnesota, County of Cass.

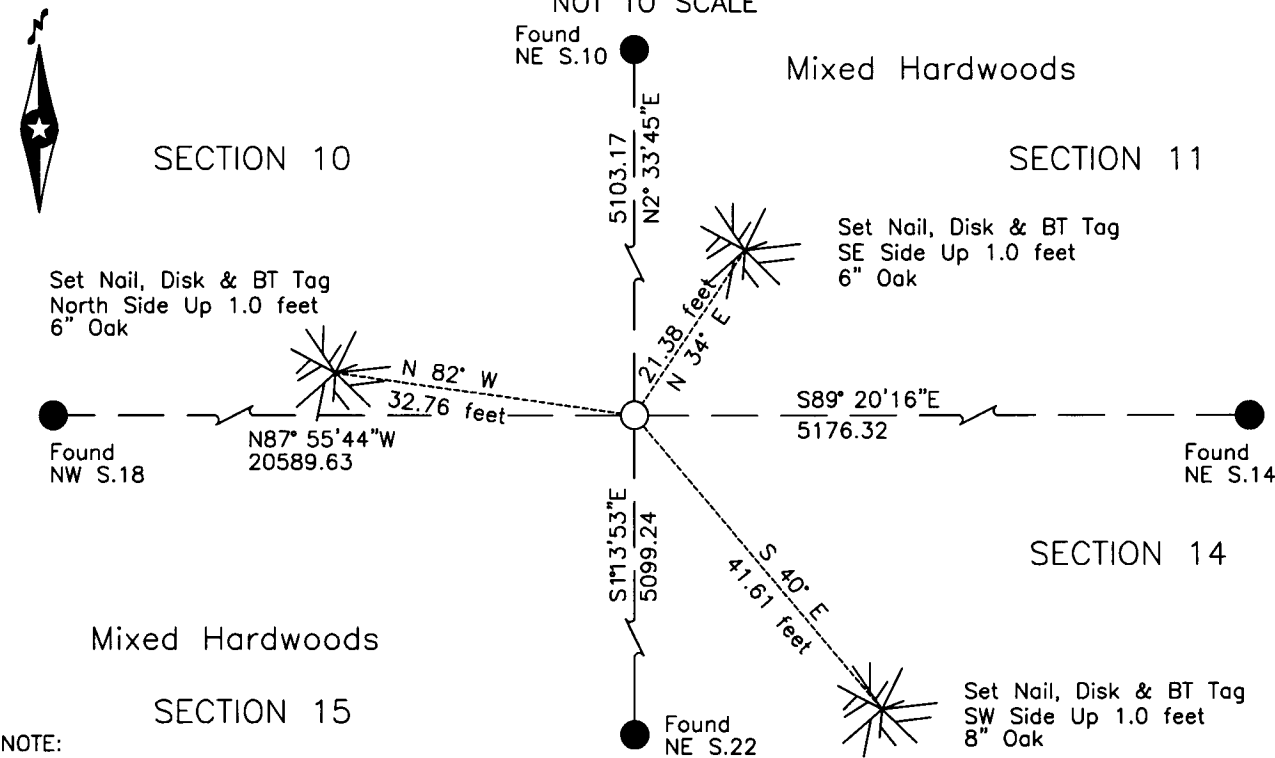
At the corner location shown on the sketch:

On _____ found _____

left monument as found lowered monument removed monument (explain)

On 10 Apr 2014 placed a 1/2" x 18" rebar, RLS No. 16459, by double
proportion between recovered monuments.

SKETCH OF REFERENCE TIES
NOT TO SCALE



NOTE:
Datum is MN State Plane, North Zone

Statement of evidence relative to this corner location is on the back of this page.

I hereby certify that this survey, plan or report was prepared by me or under my direct supervision and that I am a duly Licensed Land Surveyor under the laws of the State of Minnesota.
I further certify that this United States public land survey monument record is correct and complete to the best of my knowledge and belief.

Robert L. Kovanen

Date 3/13/15 MN License No. 16459



Index No. J.0-17.0

Statement of Evidence

Northeast corner of Section 15, Township 139 North, Range 27 West, 5th Principal Meridian.

April 9 G. Johnson and A. Thornton, General Land Office (GLO) Deputy Surveyors, in the subdivision of this
1864 township, set a post for the original corner and the following accessories were noted:
7" Maple N 56° E 30 links (19.80 feet) 40" W. Pine N 10° W 24 links (15.84 feet)
5" Ironwood S 20° E 16 links (10.56 feet) 35" W. Pine S 40° W 8 links (5.28 feet)
The original plat and above record are archived with the Minnesota Historical Society, St. Paul, Minnesota,
copies are filed with Cass County Highway Department/Surveyor's Office.

1936 Civilian Conservation Corps (CCC), Washburn Lake Book 7, page 26, on file at the Minnesota Department
of Natural Resources (MN/DNR) office in Brainerd, MN. The Cass County Land Corner Record shows this
entry as "set approx cor – Oak stake".

1937 CCC, Washburn Lake Book 1, page 23, on file at the MN/DNR office in Brainerd, MN. The Cass County
Land Corner Record shows this entry as "Fnd cor. 77.20 Ch. From S".

Nov. NWSE, crew of Bomstad and Walker-O'Beirne searched for the subject corner with no recovery.
2013

March Northwestern Surveying and Engineering, Inc. (NWSE), Robert Kovanen, LS 16459, reviewed the existing
2014 information and created a proportionate search position based on recovered monuments.

April NWSE, crew of Bomstad and Walker-O'Beirne made an additional search and finding no evidence,
2014 confirmed a placement as described above with Robert Kovanen. A ½ by 19 inch rebar, capped LS 16459,
was set at the computed position. The monument, together with the recovered and established references
for the position are shown on the face of this document.

Analysis of the recovered record data, field evidence and survey measurements, indicates that the monument
established by NWSE in 2014 is the accepted location of this corner.