



A000610252

OFFICE OF THE COUNTY RECORDER
CASS COUNTY, MINNESOTA
CERTIFIED, FILED, AND/OR
RECORDED ON

3/19/2015 11:01:49 AM

AS DOC #: A000610252

PAGES: 2

REC FEES: 0.00

KATHRYN M. NORBY
CASS COUNTY RECORDER

BY SR _____ Dep TX#: 121588

Page 1 of 2 A000610252

CERTIFICATE OF LOCATION OF GOVERNMENT CORNER

Index No. E.0-17.0

NORTHEAST CORNER of Section 10, Township 139 N., Range 25 W., 5th P.M.

State of Minnesota, County of Cass.

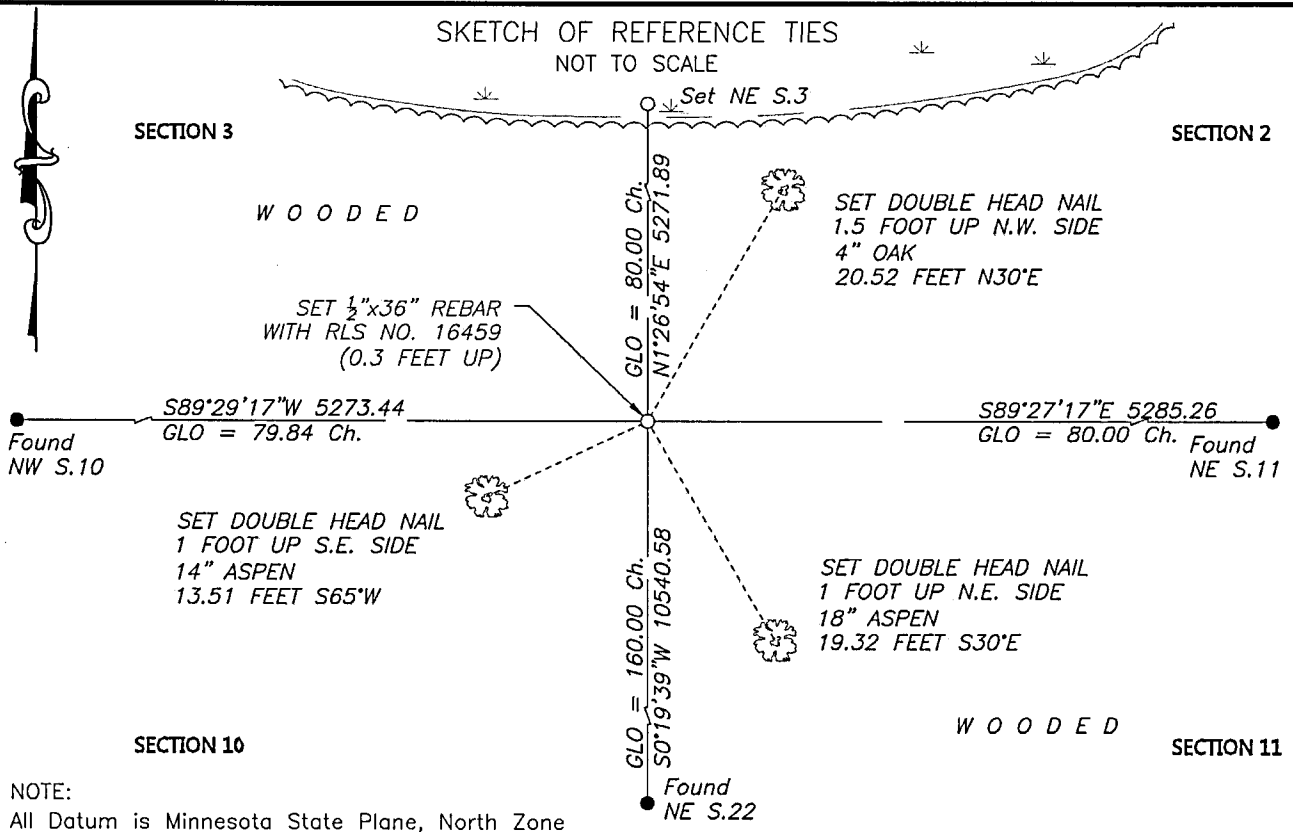
At the corner location shown on the sketch:

On _____ found _____

left monument as found lowered monument removed monument (explain)

On 17 Apr 2014 placed A 1/2" x 36" REBAR WITH CAP MARKED

RLS NO. 16459, AT A DOUBLE PROPORTION POSITION.



Statement of evidence relative to this corner location is on the back of this page.

I hereby certify that this survey, plan or report was prepared by me or under my direct supervision and that I am a duly Licensed Land Surveyor under the laws of the State of Minnesota.
I further certify that this United States public land survey monument record is correct and complete to the best of my knowledge and belief.

Robert L. Kovanen

Date 3/13/15 MN License No. 16459



Index No. E.0-17.0

Statement of Evidence

Northeast corner of Section 10, Township 139 North, Range 25 West, 5th Principal Meridian.

Nov.19 1863 G. Johnson and A. Thornton, General Land Office (GLO) Deputy Surveyors, in the subdivision of this township, set a post for the original corner with bearing trees as follow:
9" Aspen N 60° E 127 links (83.32 feet) 4" Pine N 55° W 132 links (87.12 feet)
8" Aspen S 40° W 77 links (50.82 feet) 9" W. Pine S 70° E 58 links (38.28 feet)
The original plat and above record are archived with the Minnesota Historical Society, St. Paul, Minnesota, copies are filed with Cass County Highway Department/Surveyor's Office.

Sep. 1939 Air photo BXN-1-217, on file with the Minnesota Department of Natural Resources and the John R. Borchert Map Library of the University of Minnesota. The uncorrected photo was georeferenced and positioned under the Northwestern Surveying and Engineering, Inc. (NWSE) working drawing. The subject corner falls westerly of a road that bears southwest. There are no evident lines of occupation visible in the vicinity of the subject corner.

1937 Civilian Conservation Corps, Washburn Lake Book 2, page 47, on file with the Minnesota Department of Natural Resources in Brainerd, MN. The Cass County Land Corner Record states "at 5231 from east 27; S of cor 4" sq post".

Nov. 2013 NWSE, crew of Bomstad and Walker-O'Beirne searched for the subject corner with no recovery.

March 2014 NWSE, Robert Kovanen, LS 16459, reviewed existing information and determined the corner lost. A position was computed by double proportion. The longitude controlled by the recovered and certified Northwest corner of Section 10 and the recovered and certified Northeast corner of Section 11. And the latitude controlled by the established Northeast corner of Section 3 and the recovered Northeast corner of Section 22.

April 2014 NWSE, crew of Rice and McLellan made an additional search for evidence of the subject corner with no recovery. A ½ by 36 inch rebar, capped LS 16459 was placed at the lost position described above. The monument, together with the recovered and established references for the position is shown on the face of this document.

Analysis of the recovered record data, field evidence and survey measurements, indicates that the monument established by NWSE in 2014 is the accepted location of this corner.