



A000610248

OFFICE OF THE COUNTY RECORDER
CASS COUNTY, MINNESOTA
CERTIFIED, FILED, AND/OR
RECORDED ON

3/19/2015 11:01:45 AM

AS DOC #: A000610248

PAGES: 2

REC FEES: 0.00

KATHRYN M. NORBY
CASS COUNTY RECORDER

BY SR _____ Dep TX#: 121588

CERTIFICATE OF LOCATION OF GOVERNMENT CORNER

Index No. C.0-13.0

EAST QUARTER CORNER of Section 4, Township 139 N., Range 25 W., 5th P.M.

State of Minnesota, County of Cass.

At the corner location shown on the sketch:

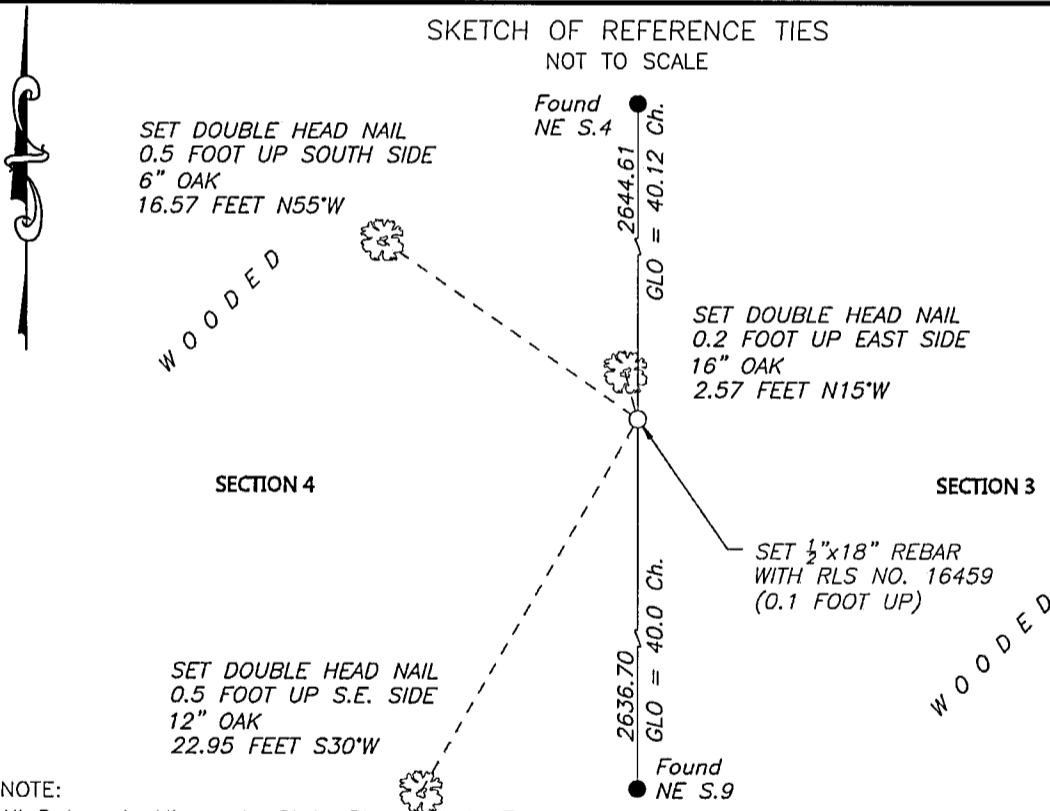
On _____ found _____

left monument as found lowered monument removed monument (explain)

On 17 Apr 2014 placed A 1/2" x 18" REBAR WITH CAP MARKED

RLS NO. 16459, AT A SINGLE PROPORTION POSITION.

SKETCH OF REFERENCE TIES
NOT TO SCALE



NOTE:
All Datum is Minnesota State Plane, North Zone

Statement of evidence relative to this corner location is on the back of this page.

I hereby certify that this survey, plan or report was prepared by me or under my direct supervision and that I am a duly Licensed Land Surveyor under the laws of the State of Minnesota.

I further certify that this United States public land survey monument record is correct and complete to the best of my knowledge and belief.

Robert L. Kovanen

Date 3/12/15 MN License No. 16459

**Index No. C.0-13.0**Statement of Evidence**East Quarter corner of Section 4, Township 139 North, Range 25 West, 5th Principal Meridian.**

Nov.17 1863 G. Johnson and A. Thornton, General Land Office (GLO) Deputy Surveyors, in the subdivision of this township, set a post for the original corner with bearing trees as follow:
12" Aspen N 40° E 29 links (19.14 feet) 13" Aspen S 48° W 26 links (17.16 feet)
The original plat and above record are archived with the Minnesota Historical Society, St. Paul, Minnesota, copies are filed with Cass County Highway Department/Surveyor's Office.

March 2014 NWSE, Robert Kovanen, LS 16459, reviewed existing information and determined the corner lost. A position was computed at single proportion between the established and certified Northeast and Southeast corners of Section 4.

April 2014 NWSE, crew of Bomstad and Walker-O'Beirne made a search for the subject corner with no recovery. A ½ by 18 inch rebar, capped LS 16459 was placed at the lost position described above. The monument, together with the recovered and established references for the position is shown on the face of this document.

Analysis of the recovered record data, field evidence and survey measurements, indicates that the monument established by NWSE in 2014 is the accepted location of this corner.