



A000610239

OFFICE OF THE COUNTY RECORDER  
CASS COUNTY, MINNESOTA  
CERTIFIED, FILED, AND/OR  
RECORDED ON

3/19/2015 11:01:36 AM

AS DOC #: A000610239

PAGES: 2

REC FEES: 0.00

KATHRYN M. NORBY  
CASS COUNTY RECORDER

BY SR \_\_\_\_\_ Dep TX#: 121588

Page 1 of 2 A000610239

Twp 138 Rge 30 Index No. J.0-19.0

### CERTIFICATE OF LOCATION OF GOVERNMENT CORNER

North Quarter corner of Section 14, Township 138 N., Range 30 W., 5th P.M.  
State of Minnesota, County of Cass.

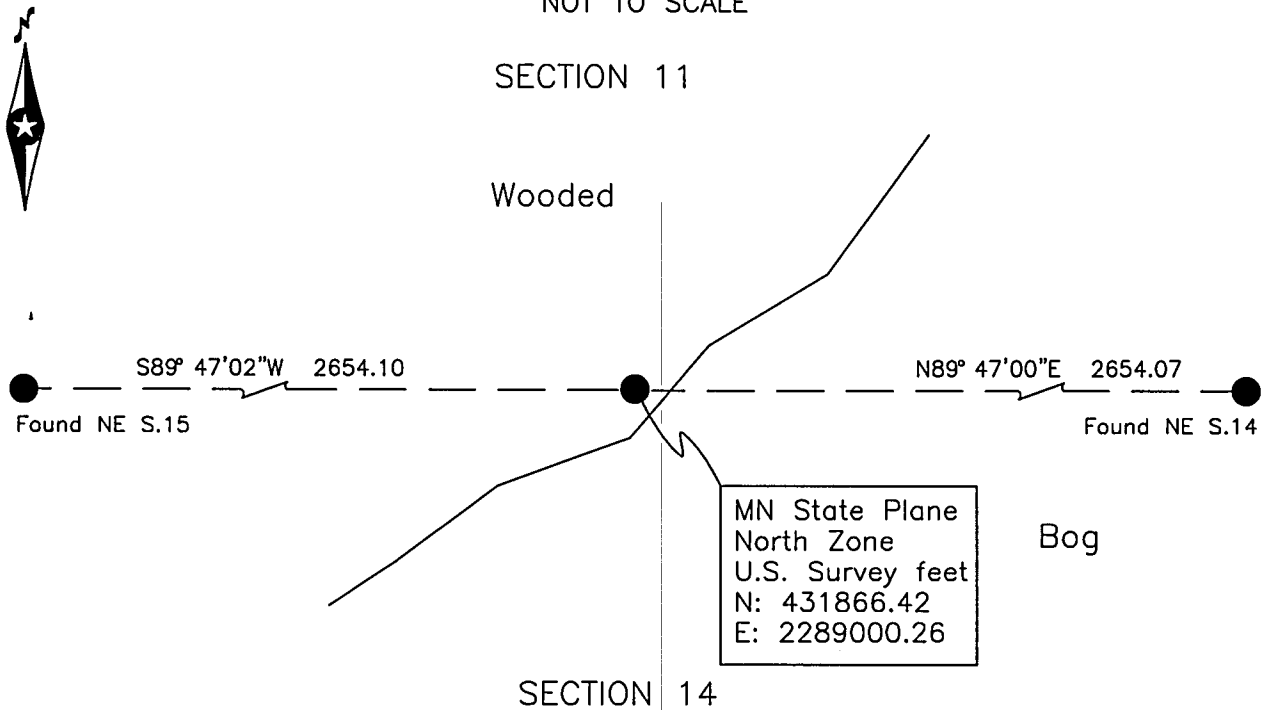
At the corner location shown on the sketch:

On 2 July 2014 found \_\_\_\_\_ a 3/4 inch rebar.

left monument as found     lowered monument     removed monument (explain)

On \_\_\_\_\_ placed \_\_\_\_\_

SKETCH OF REFERENCE TIES  
NOT TO SCALE



NOTE:

All Datum is Minnesota State Plane, North Zone

Statement of evidence relative to this corner location is on the back of this page.

I hereby certify that this survey, plan or report was prepared by me or under my direct supervision and that I am a duly Licensed Land Surveyor under the laws of the State of Minnesota.  
I further certify that this United States public land survey monument record is correct and complete to the best of my knowledge and belief.

Robert L. Kovanen

Date 3/13/15 MN License No. 16459



**Index No. J.0-19.0**

Statement of Evidence

**North Quarter corner of Section 14, Township 138 North, Range 30 West, 5th Principal Meridian.**

- Aug. 1865 G.B.Wright, General Land Office (GLO) Deputy Surveyor in the subdivision of Twp.138 N., R.30 W. set a post for the original corner and referenced it as follows:  
5" Blk Pine N 70° W 202 links (133.32 feet)  
Said records are on file at the Minnesota Historical Society, St. Paul, Minnesota, copies are filed with Cass County Highway Department/Surveyor's Office.
  
- Dec. 2004 B.Grivna, LS 17253, Certificate of Survey for Mark Falls, copy on file with Cass County Highway Department/Surveyor's Office, indicates an iron monument set at a lost position for the subject corner.
  
- July 2014 Northwestern Surveying and Engineering, Inc. (NWSE) crew of Smith and Jackson, recovered and located a 3/4 inch rebar. The monument, recovered and established references for the position are shown on the face of this document.

**Analysis of the recovered record data, field evidence and survey measurements, indicates that the monument recovered by NWSE in 2014 is the accepted location of this corner.**