



A000610235

OFFICE OF THE COUNTY RECORDER
CASS COUNTY, MINNESOTA
CERTIFIED, FILED, AND/OR
RECORDED ON

3/19/2015 11:01:32 AM

AS DOC #: A000610235

PAGES: 2

REC FEES: 0.00

KATHRYN M. NORBY
CASS COUNTY RECORDER

BY SR _____ Dep TX#: 121588

Twp 138 Rge 30 Index No. E.0-23.0

CERTIFICATE OF LOCATION OF GOVERNMENT CORNER

North Quarter corner of Section 12, Township 138 N., Range 30 W., 5th P.M.

State of Minnesota, County of Cass.

At the corner location shown on the sketch:

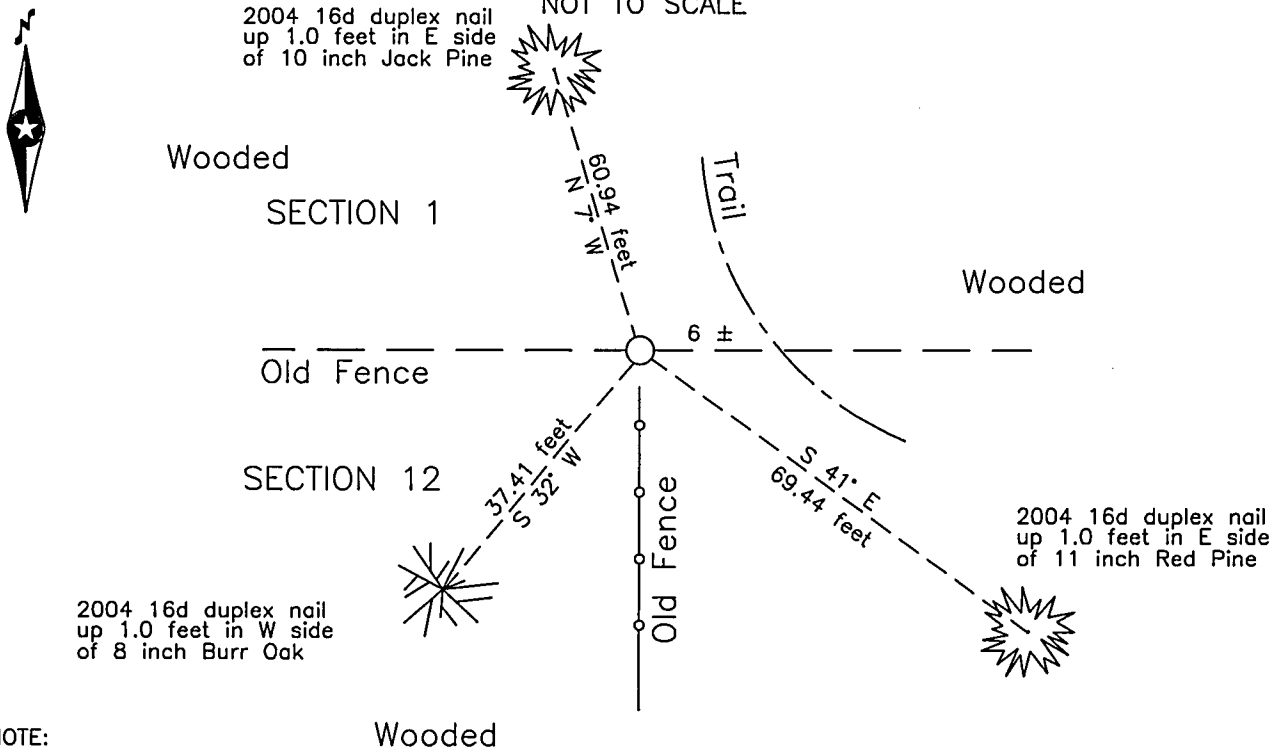
On 1 July 2014 found _____ a 1 inch iron pipe, 6 feet± west of trail

left monument as found lowered monument removed monument (explain)

On _____ placed _____

SKETCH OF REFERENCE TIES

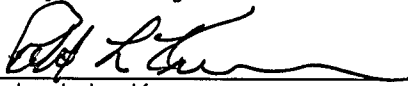
NOT TO SCALE



NOTE:
All bearings are true

Statement of evidence relative to this corner location is on the back of this page.

I hereby certify that this survey, plan or report was prepared by me or under my direct supervision and that I am a duly Licensed Land Surveyor under the laws of the State of Minnesota.
I further certify that this United States public land survey monument record is correct and complete to the best of my knowledge and belief.


Robert L. Kovanen
Date 5/13/15 MN License No. 16459



Index No. E.0-23.0

Statement of Evidence

North Quarter corner of Section 12, Township 138 North, Range 30 West, 5th Principal Meridian.

July 18 1865 G.B.Wright, GLO Deputy Surveyor, in the notes of the subdivision of Township 138 North, Range 30 West set a post for the original corner and referenced it as follows:
5" Blk Pine N 67 1/2° E 26 links (17.16 feet) 9" Blk Pine N 68° W 35 links (23.10 feet)
Said records are on file at the Minnesota Historical Society, St. Paul, Minnesota, copies are filed with the Cass County Highway Department/Surveyor's Office.

Aug. 1999 Lee Brown, Westwood Professional Services, St. Cloud office, requested information on Section 1.

Nov. 2003 J.Kramer, LS 23668, Kramer, Leas & DeLeo, Brainerd office, performed a survey in the northwest quarter of Section 12. The survey on file at the Cass County Highway Department/Surveyor's Office indicates the subject corner to be found.

July 2004 B.Hippen, CCSO technician, found a 1 inch outside diameter iron pipe, up 0.2 feet, at the corner of an old woven wire fence, 6 feet west of the centerline of a trail and witnessed as follows:
10" J. Pine N 7° W 60.94 feet 11" R. Pine S 41° E 69.44 feet
8" B. Oak S 32° W 37.41 feet

July 2014 Northwestern Surveying and Engineering, Inc. (NWSE) crew of Smith and Jackson, recovered and located a 1 inch iron pipe. The monument, recovered and established references for the position are shown on the face of this document.

Analysis of the recovered record data, field evidence and survey measurements, indicates that the monument found by the NWSE in 2014 is the accepted location of this corner.