



A000610230

OFFICE OF THE COUNTY RECORDER
 CASS COUNTY, MINNESOTA
 CERTIFIED, FILED, AND/OR
 RECORDED ON

3/19/2015 11:01:27 AM

AS DOC #: A000610230

PAGES: 2

REC FEES: 0.00

KATHRYN M. NORBY
 CASS COUNTY RECORDER

BY SR _____ Dep TX#: 121588

CERTIFICATE OF LOCATION OF GOVERNMENT CORNER

Index No. E.0-11.0

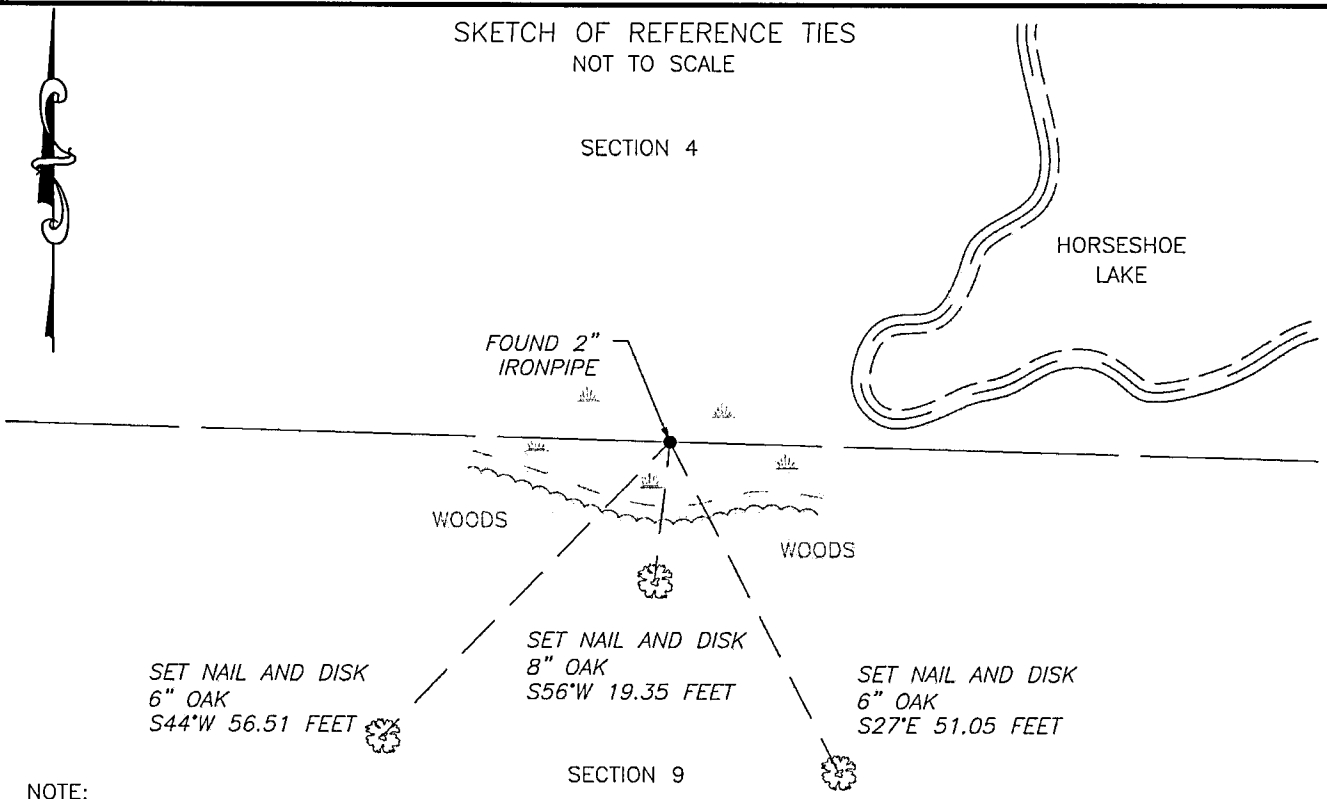
NORTH QUARTER of Section 09, Township 138 N., Range 29 W., 5th P.M.
 State of Minnesota, County of Cass.

At the corner location shown on the sketch:

On 13 NOV 2013 found 2" IRON PIPE

left monument as found lowered monument removed monument (explain)

On _____ placed _____



NOTE:
 All bearings are true

Statement of evidence relative to this corner location is on the back of this page.

I hereby certify that this survey, plan or report was prepared by me or under my direct supervision and that I am a duly Licensed Land Surveyor under the laws of the State of Minnesota.
 I further certify that this United States public land survey monument record is correct and complete to the best of my knowledge and belief.

Robert L. Kovanen

Date 3/13/15 MN License No. 16459



Index No. E.0-11.0

Statement of Evidence

North Quarter corner of Section 9 and Meander Corner No. 6, Township 138 North, Range 29 West, 5th Principal Meridian.

July 22 1865 T.B.Walker, General Land Office Deputy Surveyor in the subdivision of Township 138 North, Range 29 West. He ran easterly on the line between Sections 4 and 9 and set a post for the original quarter/meander corner. The line continues easterly and terminates at Horseshoe Lake. The following witnesses are listed:
 3" Blk Pine S 40° E 60 links (39.60 feet) 4" Blk Pine N 78° E 198 links (130.68 feet)
 The notes call for leaving a marsh 0.50 chains east of the subject corner. Said records are on file at the Minnesota Historical Society, St. Paul, Minnesota, copies are filed with Cass County Highway Department/Surveyor's Office.

Oct. 1913 J.W.Curo, LS 1428, County Surveyor, Cass Survey Record No. 244, Book B, page 35, on file with Cass County Highway Department/Surveyor's Office, states "go to the ¼ corner....being Meander corner No. 6 on south side of west arm of Horseshoe Lake....We find the Northwest bearing tree plainly marked but down, and from the stump....we set a 2 x 2 x 24 inch tamarac stake with tack in top for the true Meander Corner No. 6, being the true ¼ corner between Sections 4 and 9....and mark new bearings which stand as follows:
 12" Tamarac N 61°30'EW 17.65 feet 8" Birch S 37°18' E 31.45 feet
 The old SW bearing tree has been burned out".

Sep. 1971 Plat of RUTH SHORES, by W.Spain Jr., LS 2003, recorded with the Cass County Recorder as Document Number 202769. Said plat shows a distance and bearing tie to the subject corner.

June 1999 T.Freeman, LS 21367, Landecker & Associates, Inc., Certificate of Survey in Gov't Lot 1, Section 9, copy on file with Cass County Highway Department/Surveyor's Office, indicates the subject corner to be found.

Jan. 2002 D.Landecker, LS 17008, Certificates of Survey in the N 1/2 of Section 9, copies on file with Cass County Highway Department/Surveyor's Office, indicates the subject corner to be established.

2005-2007 Landecker & Associates, Inc., performed numerous surveys in the N ½ of Section 9, all of which are dependent on the subject corner.

April 2011 C.Hidde, LS 44881, Stonemark Land Surveying, Inc., Certificate of Survey in the NE 1/4 of Section 9, copy on file with Cass County Highway Department/Surveyor's Office, indicates a monument found.

Nov. 2013 Northwestern Surveying and Engineering, Inc. (NWSE) crew of Bomstad and Walker-O'Bierne, found a 2 inch diameter iron pipe, in a wetland. The monument, recovered and established references for the position are shown on the face of this document.

Analysis of the recovered record data, field evidence and survey measurements, indicates that the monument recovered by NWSE in 2013 is a correct perpetuation of this corner.