



A000610095

OFFICE OF THE COUNTY RECORDER
CASS COUNTY, MINNESOTA
CERTIFIED, FILED, AND/OR
RECORDED ON

3/12/2015 12:56:30 PM

AS DOC #: A000610095

PAGES: 2

REC FEES: 0.00

KATHRYN M. NORBY
CASS COUNTY RECORDER

BY SR _____ Dep TX#: 121466

Twp 139 Rge 25 Index No. T.0-25.0

Page 1 of 2
A000610095

CERTIFICATE OF LOCATION OF GOVERNMENT CORNER

East Quarter of Section 25, Township 139 N., Range 25 W., 5th P.M.
State of Minnesota, County of Cass

At the corner location shown on the sketch:

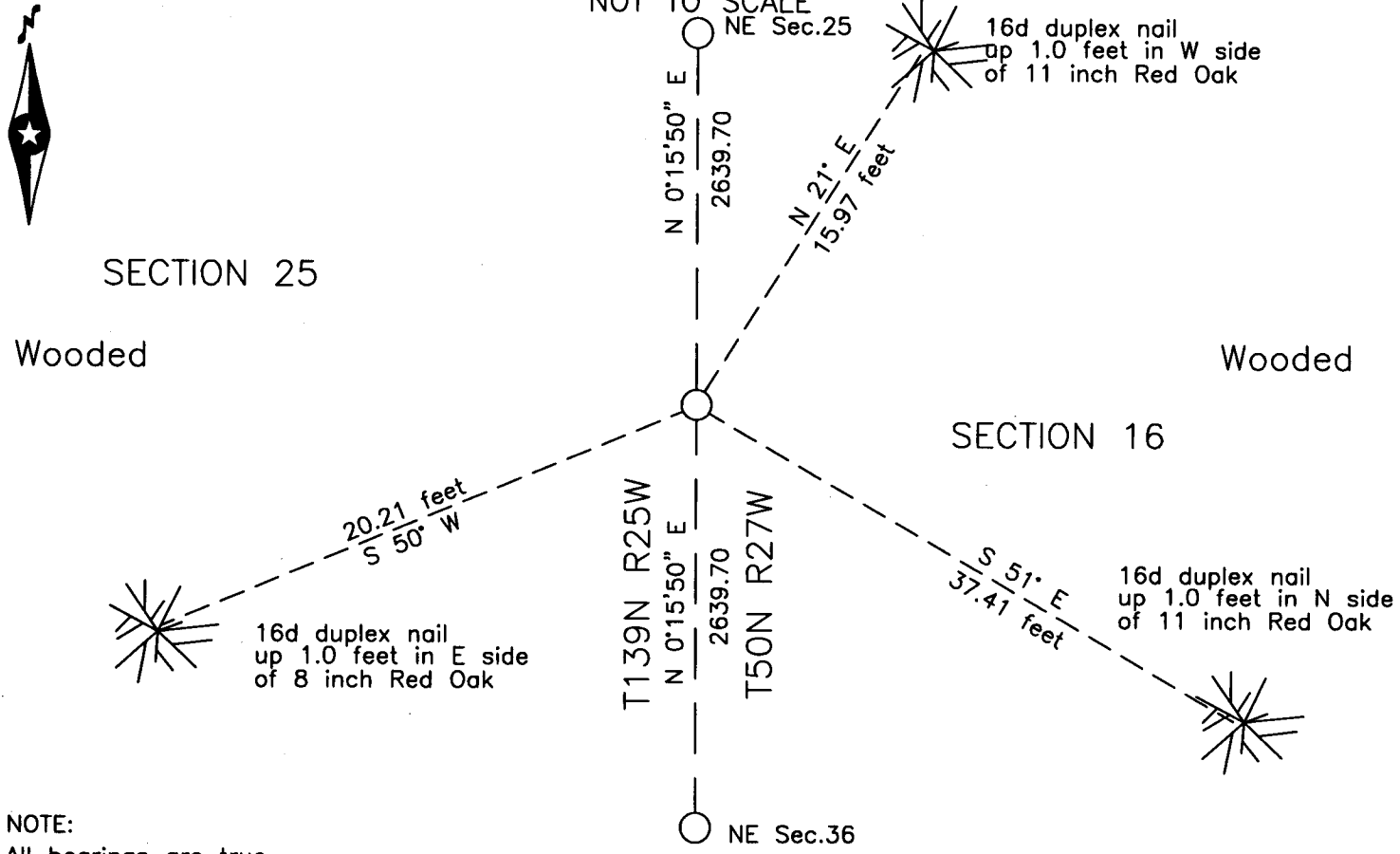
On _____ found _____

- left monument as found
- lowered monument
- removed monument (explain)

On 15 July 2004 placed a 7/8 inch OD iron pipe, stamped 16459, up 0.3 foot.

SKETCH OF REFERENCE TIES

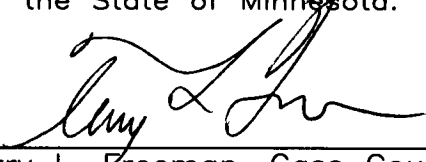
NOT TO SCALE



NOTE:
All bearings are true

Statement of evidence relative to this corner location is on the back of this page.

I hereby certify that this survey, plan or report was prepared by me or under my direct supervision and that I am a duly Licensed Land Surveyor under the laws of the State of Minnesota.



Terry L. Freeman, Cass County Surveyor
Date 3/11/15 MN License No. 21367

Statement of Evidence**East Quarter corner Section 25, Township 139 North, Range 25 West, 5th Principal Meridian.**

- Nov. 1863 G.A. Johnson, GLO Deputy Surveyor, in the notes of the 3rd Guide Meridian between 9th and 10th Parallels, set a post for the original corner and referenced it as follows:
 5" Y. Birch S 45° W 14 links (9.24 feet) 6" Fir N 80° W 31 links (20.46 feet)
 The above record is on file with the Minnesota Historical Society in St. Paul, Minnesota, copies are filed with the Cass County Highway Department, Surveyor's Office (CCHD/SO).
- 1937 CCC personnel, Washburn Lake notes, Book 2, page 18, on file in the Department of Natural Resources Office (DNR), states set approx. 40 chains from North.
- 1941 CCC personnel, Washburn Lake notes, Emily Game Refuge Book, page 16, on file in the DNR Office, states at 2640' from South set approx. corner 4" Poplar.
- July 2004 B. Hippen, technician, records of the CCHD/SO, set a 7/8 inch outside diameter iron pipe, stamped 16459 up 0.3 foot, at the prorated distance between the recovered Southeast corner of Section 36 and recovered line tree on the East line of Section 24 and made the following witnesses:
 11" R. Oak N 21° E 15.97 feet 8" R. Oak S 50° W 20.21 feet
 11" R. Oak S 51° E 37.41 feet

The monument, recovered and established references for the position are shown on the face of this document.

Analysis of the recovered record data, field evidence and survey measurements, indicates that the monument set by the CCHD/SO in is the accepted location of this corner.

County Coordinates (Cass County North)

Northing 107997.84

Easting 610400.28