



A000609816

OFFICE OF THE COUNTY RECORDER
CASS COUNTY, MINNESOTA
CERTIFIED, FILED, AND/OR
RECORDED ON

2/26/2015 10:39:32 AM

AS DOC #: A000609816

PAGES: 2

REC FEES: 0.00

KATHRYN M. NORBY
CASS COUNTY RECORDER

BY SR _____ Dep TX#: 121230

Page 1 of 2 A000609816

Twp 144 Rge 31 Index No. N.0-15.0

CERTIFICATE OF LOCATION OF GOVERNMENT CORNER

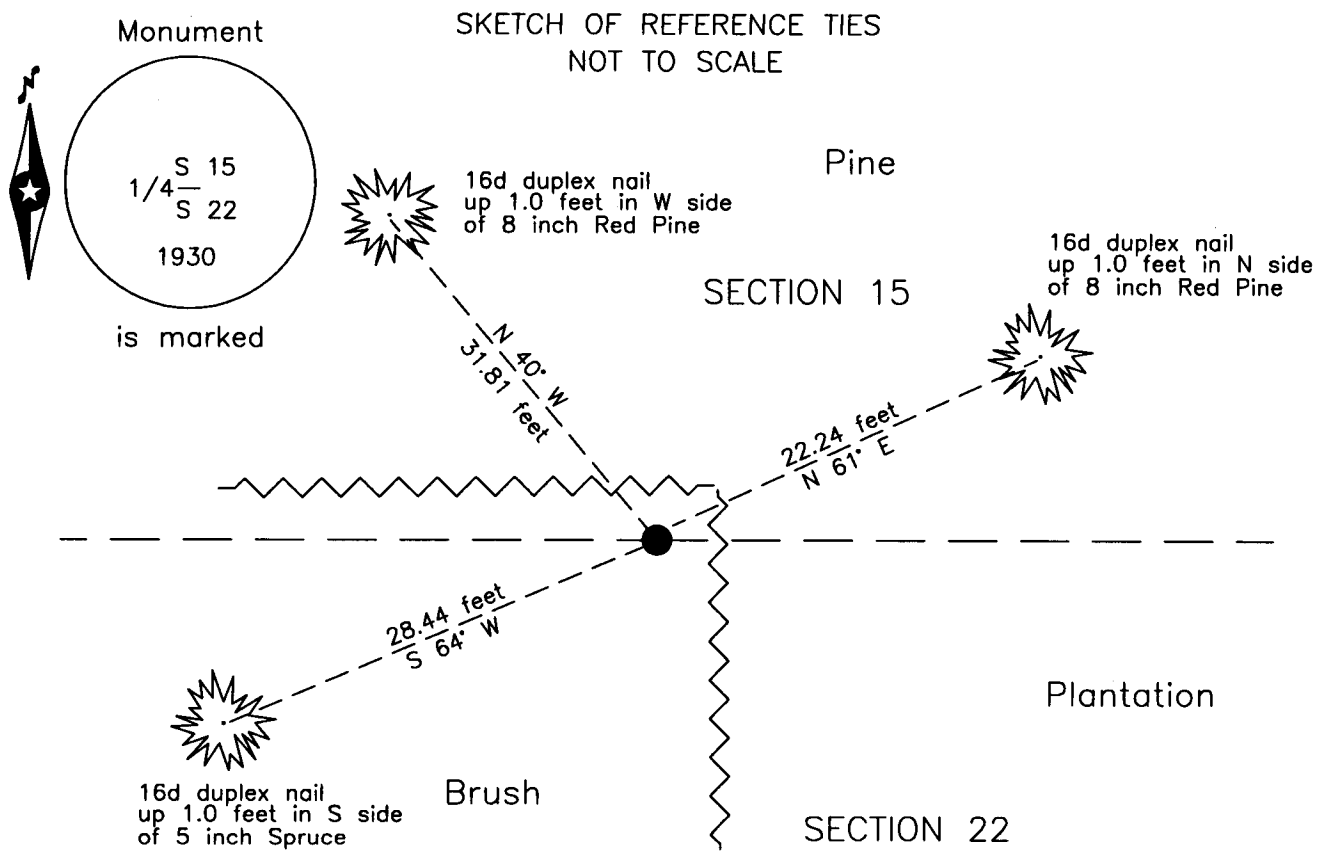
North Quarter corner of Section 22, Township 144 N., Range 31 W., 5th P.M.
State of Minnesota, County of Cass

At the corner location shown on the sketch:

On 17 April 2007 found a 1 inch outside diameter iron pipe with brass cap,
up 0.1 foot, at corner of Pine Plantation.

left monument as found lowered monument removed monument (explain)

On _____ placed _____



NOTE:
All bearings are true

Statement of evidence relative to this corner location is on the back of this page.

I hereby certify that this survey, plan or report was prepared by me or under my direct supervision and that I am a duly Licensed Land Surveyor under the laws of the State of Minnesota.

Terry L. Freeman, Cass County Surveyor
Date 2/25/15 MN License No. 21367

**Index No. N.0-15.0**Statement of Evidence**North Quarter corner of Section 22, Township 144 North, Range 31 West, 5th Principal Meridian.**

Aug. B.C. Baldwin, General Land Office (GLO) Deputy Surveyor, in the notes of the subdivision of Township 144 North,
1875 Range 31 West, set a post for the original corner and referenced it as follows:

4" J. Pine N 42° W 15 links (9.90 feet) 4" J. Pine S 48° E 12 links (7.92 feet)

The above record is on file with the Minnesota Historical Society in St. Paul, Minnesota, copies are filed with the Cass County Highway Department, Surveyor's Office (CCHD/SO).

Aug. E.B. Horst, LS 376, Deputy County Surveyor, Survey Record No. 508, Book D, page 66, and Curo Book 186,
1922 page 27, on file in the CCSO, states "find the U.S. B.T. J. P. 4 N 42° W 15 lks still standing green and plainly
marked from which we set the true ¼ S. corner (a wood Post)". Lists new witnesses as follows:

8" J. Pine N 12° W 34.8 feet 9" J. Pine S 70°20' E 111.8 feet

Aug. H.D. Craig, U.S. Surveyor, in the notes of the Dependent Resurvey of a portion of Township 144 North,
1930 Range 31 West, set this corner at "Proportionate distance; there is no remaining evidence of the orig. post or
bearing trees. Set an iron post, 3 ft. long, 1 in. diam., 30 ins. in the ground, for the ¼ sec. cor. of secs. 15 and 22,
with brass cap" and referenced it as follows:

10" J. Pine N 86° E 254 links (167.64 feet) 10" J. Pine S 60 3/4° E 216 links (142.56 feet)

Said records are on file with the Minnesota Historical Society in St. Paul, Minnesota, copies are filed with the CCHD/SO.

April B. Hippen, technician, records of the CCHD/SO, found the 1930 GLO monument with the top 1.0 foot bent 0.4
2007 foot south. Set a 60d spike and washer over the vertical part of the pipe and witnessed as follows:

8" N. Pine N 40° W 31.81 feet 8" N. Pine N 61° E 22.24 feet

5" Spruce S 64° W 28.44 feet

The recovered and established references for the position are shown on the face of this document.

Analysis of the recovered record data, field evidence and survey measurements, indicates that the monument recovered by the CCHD/SO is the accepted location of this corner.

County Coordinates (Cass County North)

Northing 273783.62

Easting 407696.25