

CERTIFICATE OF LOCATION OF GOVERNMENT CORNER

E1/4 Corner of Section 2, Township 140N, Range 26W, 5th p.m., State of Minnesota, County of Cass

At the corner location shown on the sketch:

On _____ found a _____
Date

left monument as found lowered monument removed monument (explain)
On 18 DEC. 2014 placed a 3/8" DIAMETER REROD WITH RLS CAP NO. 17774
Date

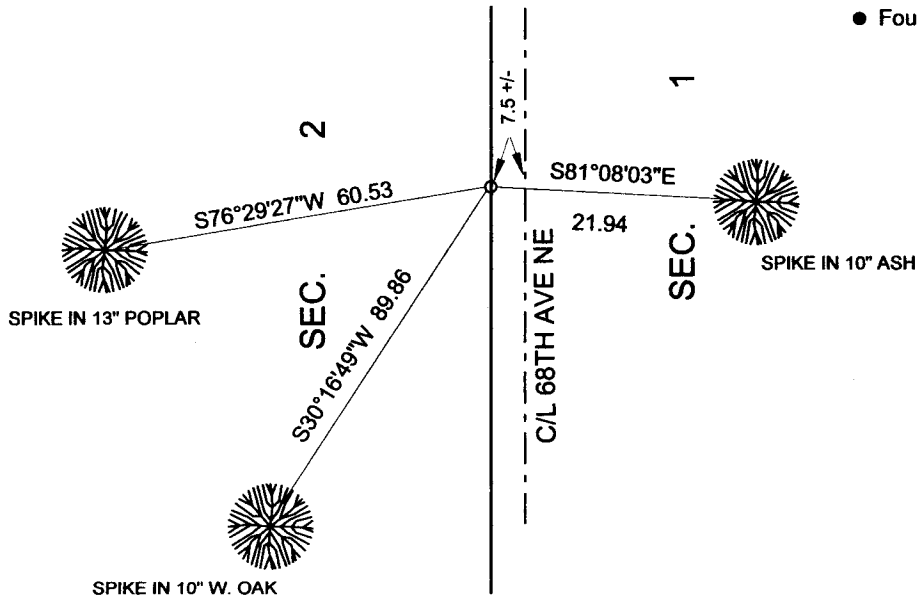
SKETCH OF REFERENCE TIES

Tie Distances are measured to the spikes.

Cass County Coordinate System (North Zone)
N= 160757.36 E= 573473.88

o Set Re-Rod with RLS cap No. 17774

● Found Pipe



NOT TO SCALE

Statement of evidence relative to this corner location is on back of page.

I hereby certify that this document and the data contained herein was prepared by me or under my direct supervision.

Marvin R. Kohout 11 FEB 2015
Marvin R. Kohout Date

License No. 17774

Land surveyor

OFFICE OF COUNTY RECORDER



A000609688

**OFFICE OF THE COUNTY RECORDER
CASS COUNTY, MINNESOTA
CERTIFIED, FILED, AND/OR
RECORDED ON**

2/19/2015 10:51:07 AM

AS DOC #: A000609688

PAGES: 2

REC FEES: 0.00

**KATHRYN M. NORBY
CASS COUNTY RECORDER**

BY SR Dep TX#: 121129

Page 1 of 2 A000609688



INDEX NO. C.0-21.0

STATEMENT OF EVIDENCE

EAST QUARTER CORNER OF SECTION 2, TOWNSHIP 140N, RANGE 26W, 5TH P.M.

- 1871 WILLIAM P. ALLEN AND EDGAR P. PUTNAM, DEPUTY GOVERNMENT SURVEYORS,
SET A POST TO MARK THE CORNER LOCATION. REFERENCES:
4" ASPEN S51W 46.2 FT
18" BIRCH S17E 135.3 FT
RECORDS ON FILE AT THE MN HISTORICAL SOCIETY, ST. PAUL, AND COPIES FILED
WITH CASS COUNTY HIGHWAY DEPT/SURVEYOR'S OFFICE (CCHD/SO)

- 1921 J. H. FLYNN SET WOODEN POST IN CENTER OF GRADED ROAD. REFERENCES:
8" DOUBLE ELM N67 3/4W 38 FT 10" W.OAK S58 1/2E 52 FT
CURO BOOK 152, PG 162-163 CCHD/SO

- 1937 CCC AT 2484' FROM THE SOUTHSET APPROX. 1/4 CORNER IN MIDDLE OF ROAD
WASHBURN LAKE FORESTRY HQ BK 5 PG 3

- 1938 CCC AT 2586" FROM SOUTH CORNER UNDER ROAD. REFERENCES :
10" ELM N67 1/2W 46.3 FT 14" W. OAK S68E 43.8 FT WASHBURN LAKE
FORESTRY HQ BK 20 PG 1

- 2014 MARVIN KOHOUT, LS NO. 17774, KOHOUT LAND SURVEYING, SEARCHED FOR
EVIDENCE OF THIS CORNER. FINDING NONE, A 3/8" DIAMETER REROD WAS SET ON
LINE BETWEEN THE NE CORNER OF SECTION 2 AND THE NORTHEAST CORNER OF
SECTION 11 AT A PROPORTIONATE DISTANCE TO MARK THE CORNER POSITION.
REFERNCES AS SHOWN ON PAGE 1