

# CERTIFICATE OF LOCATION OF GOVERNMENT CORNER

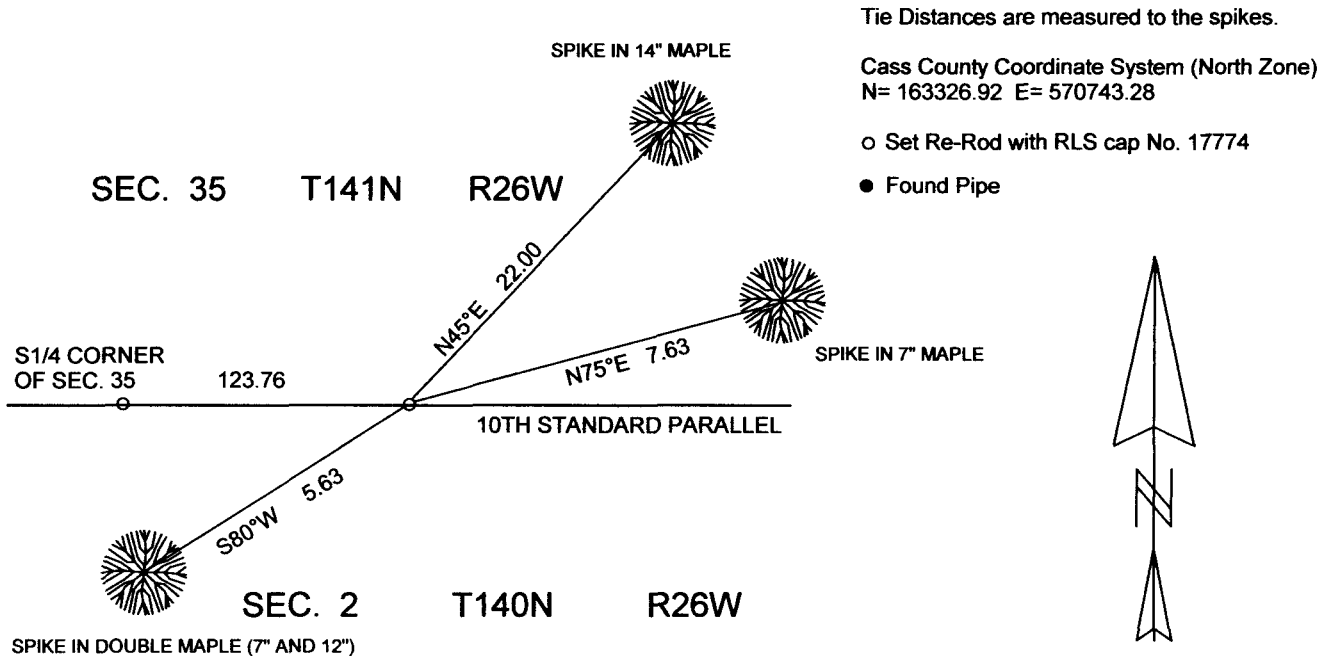
N1/4 Corner of Section 2, Township 140N, Range 26W, 5th p.m., State of Minnesota, County of Cass

At the corner location shown on the sketch:

On \_\_\_\_\_ found a \_\_\_\_\_  
Date \_\_\_\_\_

left monument as found	lowered monument	removed monument (explain)
On <u>19 JAN. 2015</u> placed a	<u>3/8" DIAMETER REROD WITH RLS CAP NO. 17774</u>	
Date		

### SKETCH OF REFERENCE TIES



**NOT TO SCALE**

Statement of evidence relative to this corner location is on back of page.

I hereby certify that this document and the data contained herein was prepared by me or under my direct supervision.

*Marvin R. Kohout*      11 FEB 2015  
Marvin R. Kohout      Date

License No, 17774

Land surveyor

OFFICE OF COUNTY RECORDER



**A000609685**

**OFFICE OF THE COUNTY RECORDER  
CASS COUNTY, MINNESOTA  
CERTIFIED, FILED, AND/OR  
RECORDED ON**

**2/19/2015 10:51:04 AM**

**AS DOC #: A000609685**

**PAGES: 2**

**REC FEES: 0.00**

**KATHRYN M. NORBY  
CASS COUNTY RECORDER**

**BY SR \_\_\_\_\_ Dep TX#: 121129**



**INDEX NO. A.0-19.0**

**STATEMENT OF EVIDENCE**

**NORTH QUARTER CORNER OF SECTION 2, TOWNSHIP 140N, RANGE 26W, 5<sup>TH</sup> P.M.**

1863 CORNER NOT ESTABLISHED IN ORIGINAL GOVT SURVEY

1937 CCC SET APPROXIMATE CORNER AT 2640 FROM THE EAST. WASHBURN LAKE FORESTRY HQ BOOK 6 PAGE 7

2014 MARVIN KOHOUT, LS NO. 17774, KOHOUT LAND SURVEYING, SEARCHED FOR EVIDENCE OF THIS CORNER. FINDING NONE, A 3/8" DIAMETER REROD WAS SET ON LINE BETWEEN THE SE CORNER OF SECTION 35, T141, R26 AND THE S1/4 OF SECTION 35 AT THE INTERSECTION OF A MEAN BEARING LINE FROM THE S1/4 CORNER OF SECTION 2. REFERENCES AS SHOWN ON PAGE 1