



A000609639

OFFICE OF THE COUNTY RECORDER
CASS COUNTY, MINNESOTA
CERTIFIED, FILED, AND/OR
RECORDED ON

2/18/2015 10:17:40 AM

AS DOC #: A000609639

PAGES: 2

REC FEES: 0.00

KATHRYN M. NORBY
CASS COUNTY RECORDER

BY SR _____ Dep TX#: 121093

Twp 135 Rge 31 Index No. J.0-25.0

CERTIFICATE OF LOCATION OF GOVERNMENT CORNER

Northeast Corner of Section 13, Township 135 N., Range 31 W., 5th P.M.
State of Minnesota, County of Cass

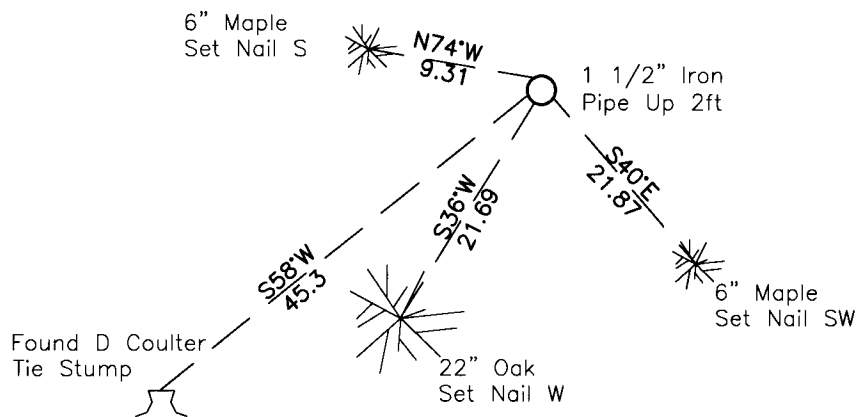
At the corner location shown on the sketch:

On Nov.4, 2014 found 1 1/2" Iron pipe found top mushroomed 2.0' above surface

left monument as found lowered monument removed monument (explain)

On _____ placed _____

SKETCH OF REFERENCE TIES NOT TO SCALE



NOTE:
All bearings are true
Coordinates are
Cass CO. South
NAD 83 96 ADJ
N=230590.273
E=486806.242

Statement of evidence relative to this corner location is on the back of this page.

I hereby certify that this survey, plan or report was prepared by me or under my direct supervision and that I am a duly Licensed Land Surveyor under the laws of the State of Minnesota.

Daniel W. Skinner, Land Surveyor
Date 2-1-15 MN License No. 40827





Index No. J.0-25.0

Statement of Evidence

Northeast Corner Section 13, Township 135 North, Range 31 West

1858 Original US General Land Office Field Notes, on file in the Secretary of State's Office, show this corner to be marked with a post and the following bearing trees were marked:

| | | | |
|-----|----------|-----------|----------|
| 9" | Blk. Oak | S 19° W | 36 links |
| 7" | Birch | N 85° E | 11 links |
| 6" | Birch | S 82.5° E | 14 links |
| 10" | Aspen | N 52° W | 58 links |

Information on file with the Minnesota Historical Society in St. Paul, MN and copies are filed with the CCHD/SO.

1923 Curo book 94, page 151, a county surveyor measured 10700' between the northeast corner of sections 12 and 24. Information found on file with CCHD/SO.

1971 Donald Coulter worked on sections 10 – 15 for a plat of Wilderness Park. He set a 1 ½" iron pipe to mark the corner. He took ties to two oak and four aspen. He measured 5330.36' to the northeast corner of section 12 and 5329.2 to the northeast corner of section 24.
Information found on file with CCHD/SO.

1998 The DNR survey crew found the 1 ½" iron pipe with a mushroomed top, up 12", and the six tie trees taken by Coulter. The northeast corner of section 12 is N00°35'44"E – 5329.62' and the northeast corner of section 24 is S00°33'16"W – 5326.52'
Information found on file with CCHD/SO.

1999 Cass County Survey Personnel found 1 ½" IP in place up 1.2'.
Found witness ties with DNR discs:

| | | | |
|-----|--------|---------|------------|
| 10" | R. Oak | S 36° W | 21.38 feet |
| 8" | Poplar | N 50° W | 22.35 feet |
| 10" | R. Oak | N 17° W | 20.50 feet |
| 8" | Poplar | N 33° E | 52.17 feet |

2001 John D. Walker filed certificate of location Cass County document number A000441839.
Information on file with CCHD/SO.

2014 Karvakko Engineering found a 1 ½ in iron pipe with the top mushroomed 2ft above ground surface and accepted it as the corner.

Found Reference ties:

| | | |
|---------------------|---------|-----------|
| D Coulter Tie Stump | S 58° W | 45.3 feet |
|---------------------|---------|-----------|

Set Reference ties:

| | | | |
|-----|-------|---------|------------|
| 6" | Maple | N 74° W | 9.31 feet |
| 22" | Oak | S 36° W | 21.69 feet |
| 6" | Maple | S 40° E | 21.87 feet |