



A000609637

OFFICE OF THE COUNTY RECORDER
CASS COUNTY, MINNESOTA
CERTIFIED, FILED, AND/OR
RECORDED ON

2/18/2015 10:17:38 AM

AS DOC #: A000609637

PAGES: 2

REC FEES: 0.00

KATHRYN M. NORBY
CASS COUNTY RECORDER

BY SR _____ Dep TX#: 121093

Twp 135 Rge 31 Index No. G.0-25.0

CERTIFICATE OF LOCATION OF GOVERNMENT CORNER

East Quarter Corner of Section 12, Township 135 N., Range 31 W., 5th P.M.
State of Minnesota, County of Cass

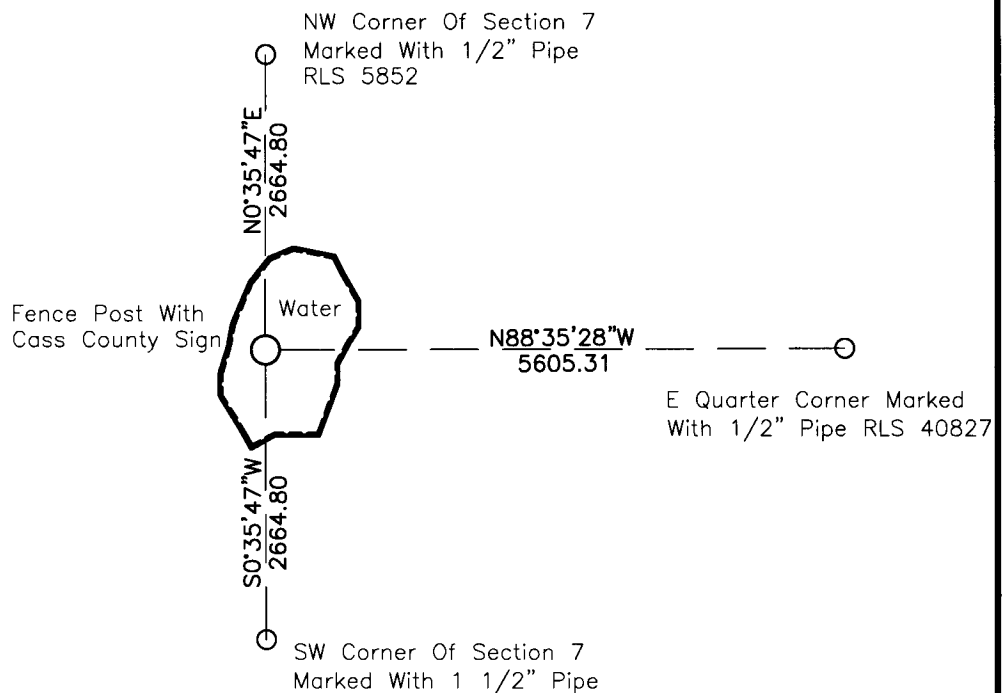
At the corner location shown on the sketch:

On _____ found _____

left monument as found lowered monument removed monument (explain)

On Dec.17, 2014 placed Placed a fence post with Cass County sign through the ice
at computed location

SKETCH OF REFERENCE TIES NOT TO SCALE



NOTE:
All bearings are true.
Coordinates are
Cass CO. South
NAD 83 96 ADJ
N=233254.925
E=486833.981

Statement of evidence relative to this corner location is on the back of this page.

I hereby certify that this survey, plan or report was prepared by me or under my direct supervision and that I am a duly Licensed Land Surveyor under the laws of the State of Minnesota.

Daniel W. Skinner, Land Surveyor
Date 2-1-15 MN License No. 40827





Index No. G.0-25.0

Statement of Evidence

East Quarter Corner Section 12, Township 135 North, Range 31 West

1858 Original US General Land Office Survey by E.N. Darling, set a wood post and bearing trees as noted:

8"	Aspen	N 73° E	41 links
2"	Pine	N 3° W	153 links

Information on file with the Minnesota Historical Society in St. Paul, MN and copies are filed with the CCHD/SO.

1999 Cass County Surveyors office personnel determined corner position in lake. Set witness pipes S 0°36'03" W 415.00 ft and N 89°59'55" W 500.00 ft.

2014 Karvako Engineering completed a search of the area didn't find any evidence of corner. Set fence post with Cass County sign in lost position through ice. No tree ties available.

Distance and direction to adjacent corners ties:

NW Corner of Sec.7	N 0° 35' 47" E	2664.80 feet
E Quarter Corner of Sec.7	N 88° 35' 28" W	5605.31 feet
SW Corner of Sec.7	S 0° 35' 47" W	2664.80 feet