

CERTIFICATE OF LOCATION OF GOVERNMENT CORNER

WC TO

N1/4 Corner of Section 8, Township 138 N Range 31 W, 5th p.m., State of Minnesota, County of Cass

At the corner location shown on the sketch:

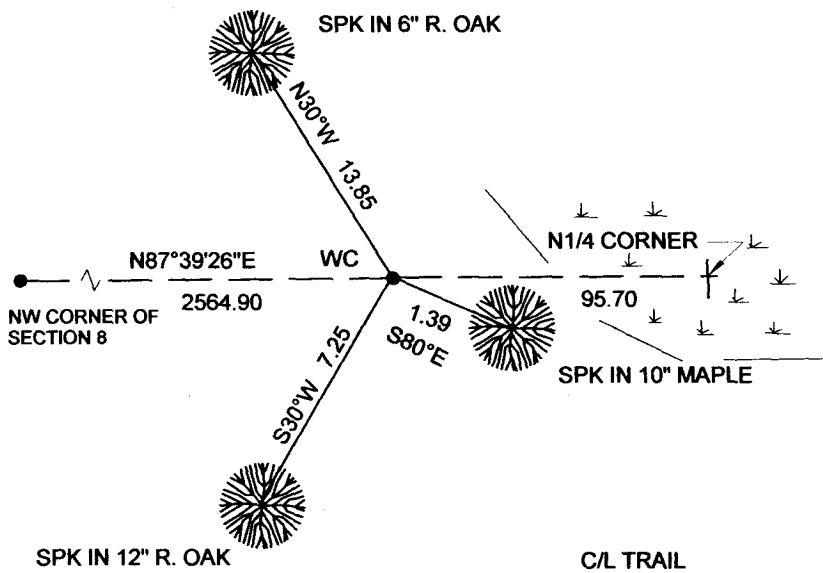
On 10/22/2014 found a 1/2" IRON PIPE W/RLS CAP 17768
Date

left monument as found lowered monument removed monument (explain)

On _____ placed a _____
Date

SKETCH OF REFERENCE TIES

SECTION 5



Tie Distances are measured to the spikes.

Cass County Coordinate System (South Zone)
WC N= 331001.45 E= 459320.91
N1/4 N= 331005.36 E= 459416.53

○ Set Re-Rod with RLS cap No. 17774

● Found Pipe



SECTION 8

BEARINGS ARE MAGNETIC

NOT TO SCALE

Statement of evidence relative to this corner location is on back of page.

I hereby certify that this document and the data contained herein was prepared by me or under my direct supervision.

Marvin R Kohout 8 Jan 2015
Marvin R. Kohout Date

License No. 17774

Land surveyor

OFFICE OF COUNTY RECORDER



A000608881

**OFFICE OF THE COUNTY RECORDER
CASS COUNTY, MINNESOTA
CERTIFIED, FILED, AND/OR
RECORDED ON**

1/15/2015 11:15:57 AM

AS DOC #: **A000608881**

PAGES: **2**

REC FEES: **0.00**

**KATHRYN M. NORBY
CASS COUNTY RECORDER**

BY SR Dep TX#: **120485**

Page 1 of 2 A000608881



INDEX NO. E.0-07.0

STATEMENT OF EVIDENCE

WITNESS CORNER TO N1/4 CORNER OF SEC. 8, TOWNSHIP 138N, RANGE 31W, 5TH P.M.

- 1870 T. B. WALKER, DEPUTY GOVERNMENT SURVEYOR, SET A POST TO MARK A WITNESS TO THE CORNER LOCATION. REFERENCES:
8" R. OAK S66°30'W 19.8 FT 6" R. OAK N40°W 16.5 FT
RECORDS ON FILE AT THE MN HISTORICAL SOCIETY, ST. PAUL AND COPIES FILED WITH THE CASS COUNTY HIGHWAY DEPT/SURVEYOR'S OFFICE (CCHD/SO)
- 2012 KLJ FIELD CREWS SEARCH AND FIND NO EVIDENCE OF THE CORNER. THEY SET AN IRON MONUMENT AT A COMPUTED LOST POSITION TO MARK THE N1/4 LOCATION. COUNTY RECORDER DOC. NO. A000599912
- 2014 MARVIN KOHOUT, LS NO. 17774, OF KOHOUT LAND SURVEYING, AND ADAM HANSON, TECHNICIAN, OF NORTHWOODS SURVEYING, SEARCHED FOR BUT DID NOT FIND THE MONUMENT SET IN 2012. HOWEVER, THE 2012 TIES WERE IN PLACE. KOHOUT AND HANSON THEN FOUND A ½ PIPE, WITH RLS CAP NO. 17768, 95.70 FEET WEST OF THE N1/4 CORNER POSITION AND ACCEPTED IT AS MARKING THE WITNESS CORNER POSITION. NOTE: PROBED 3-4 FEET THROUGH THE FLOATING BOG AT THE N1/4 CORNER POSITION AND NEVER HIT SOLID BOTTOM.

[Faint, illegible text or stamp]