

CERTIFICATE OF LOCATION OF GOVERNMENT CORNER

N1/4 Corner of Section 29, Township 136N, Range 32W, 5th p.m., State of Minnesota, County of Cass

At the corner location shown on the sketch:

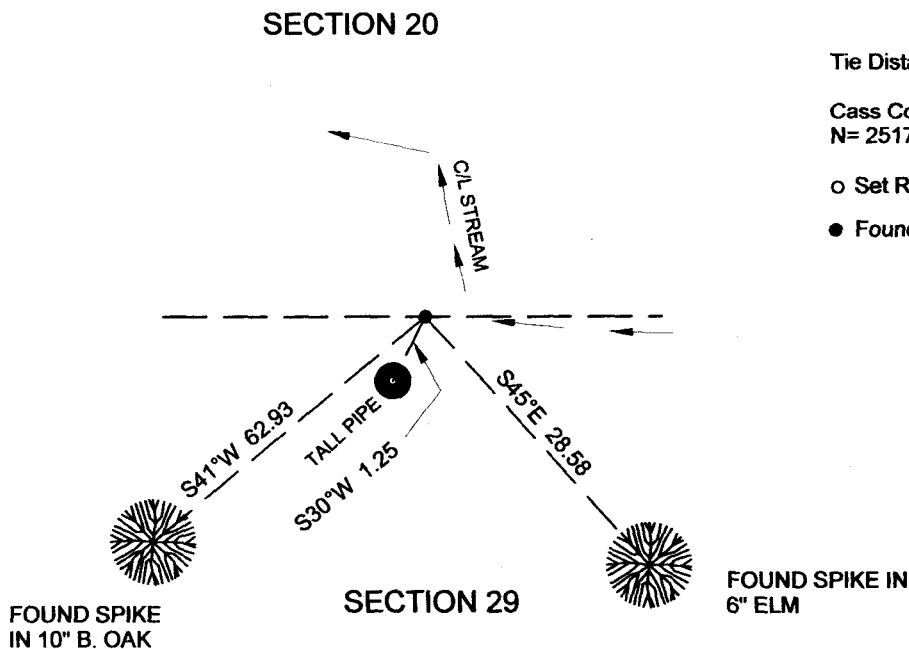
On 23 OCT. 2014 found a 2" DIA. IRON PIPE, UP 0.1', NEAR A 4' TALL 2.5" DIA. PIPE
Date

5' +/- WEST OF STREAM BANK

x left monument as found lowered monument removed monument (explain)

On _____ placed a _____
Date

SKETCH OF REFERENCE TIES

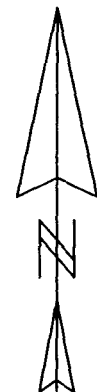


Tie Distances are measured to the spikes.

Cass County Coordinate System (South Zone)
N= 251748.86 E= 428805.26

o Set Re-Rod with RLS cap No. 17774

● Found Pipe



BEARINGS ARE MAGNETIC

NOT TO SCALE

Statement of evidence relative to this corner location is on back of page.

I hereby certify that this document and the data contained herein was prepared by me or under my direct supervision.

Marvin R. Kohout 8 JAN 2015
Marvin R. Kohout Date

License No. 17774

Land surveyor

OFFICE OF COUNTY RECORDER



A000608876

OFFICE OF THE COUNTY RECORDER
CASS COUNTY, MINNESOTA
CERTIFIED, FILED, AND/OR
RECORDED ON

1/15/2015 11:15:52 AM

AS DOC #: A000608876

PAGES: 2

REC FEES: 0.00

KATHRYN M. NORBY
CASS COUNTY RECORDER

BY SR _____ Dep TX#: 120485

Page 1 of 2 A000608876



INDEX NO. R.0-07.0

STATEMENT OF EVIDENCE

NORTH QUARTER CORNER OF SECTION 29, TOWNSHIP 136N, RANGE 32W, 5TH P.M.

- 1866 OSCAR E. GARRISON, DEPUTY GOVERNMENT SURVEYOR, SET A POST TO MARK THE CORNER LOCATION. NO REFERENCES MADE. RECORDS ON FILE AT THE MN HISTORICAL SOCIETY, ST. PAUL AND COPIES FILED WITH THE CASS COUNTY HIGHWAY DEPT/SURVEYOR'S OFFICE (CCHD/SO)

- 1904 W. H. HALLET SURVEYOR'S REPORT SHOWS ROAD SOUTH OF A STREAM AT THIS LOCATION. TOWNSHIP ROAD ORDERS

- 1918 E. B. HORST, LS 376, SETS A 2" X 48" IRON MONUMENT PROPORTIONALLY REFERENCES: 5" W. OAK SW 63.8 FT 10" J. PINE S 20 E 69.0 FT COUNTY BOOK C, PG 109 CURO BOOK 65, PG 73 INFORMATION ON FILE IN CCHD/SO

- 1926 JOHN M. GREENE, COUNTY SURVEYOR, FOUND THE 1918 MONUMENT AND REFERENCES COUNTY BOOK D, PAGE 171 INFORMATION ON FILE IN CCHD/SO

- 1938 W. J. SPAIN, LS 2003, FOUND THE 1918 MONUMENT SPAIN BOOK 1938, PAGE 32 INFORMATION ON FILE IN CCHD/SO

- 2004 CASS COUNTY SURVEYOR'S OFFICE STAFF FOUND A 2" DIA. IRON PIPE, UP 0.1 FT, ON TOP OF CREEK BANK, IN LINE WITH C/L CREEK TO THE EAST AND APPROX. 30 FT SOUTH OF CREEK TO NORTH. REFERENCES: 3" ELM N 85 W 9.51 FT 5" ELM S 45 E 28.58 FT 8" B. OAK S 41 W 62.93 FT CASS CO. HWY DEPT/SURVEYOR'S OFFICE PROJECT 2004.042

- 2014 MARVIN R. KOHOUT, LS 17774, KOHOUT LAND SURVEYING, AND ADAM HANSON, TECHNICIAN, NORTHWOODS SURVEYING, SEARCHED FOR, FOUND AND ACCEPT THE 2" DIA. IRON PIPE MARKING THE LOCATION OF THIS CORNER. 2004 REFERENCES AS SHOWN ON PAGE 1 OF THIS DOCUMENT.