

CERTIFICATE OF LOCATION OF GOVERNMENT CORNER

N1/4 Corner of Section 21, Township 136N, Range 32W, 5th p.m., State of Minnesota, County of Cass

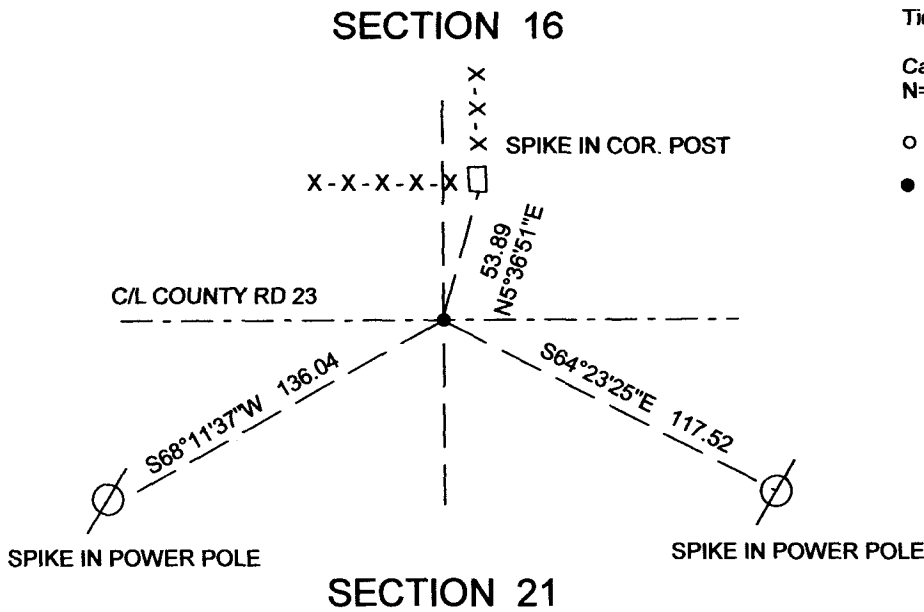
At the corner location shown on the sketch:

On 22 OCT. 2014 found a IRON PIPE WITH RLS CAP NO. 17768
 Date

X left monument as found lowered monument removed monument (explain)

On _____ placed a _____
 Date

SKETCH OF REFERENCE TIES

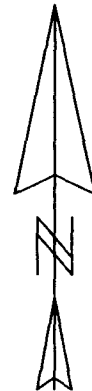


Tie Distances are measured to the spikes.

Cass County Coordinate System (South Zone)
 N= 257015.14 E= 434169.06

○ Set Re-Rod with RLS cap No. 17774

● Found Pipe



NOT TO SCALE

Statement of evidence relative to this corner location is on back of page.

I hereby certify that this document and the data contained herein was prepared by me or under my direct supervision.

Marvin R Kohout 8 JAN 2015
 Marvin R. Kohout Date

License No. 17774

Land surveyor

OFFICE OF COUNTY RECORDER



A000608871

**OFFICE OF THE COUNTY RECORDER
 CASS COUNTY, MINNESOTA
 CERTIFIED, FILED, AND/OR
 RECORDED ON**

1/15/2015 11:15:47 AM

AS DOC #: **A000608871**

PAGES: **2**

REC FEES: **0.00**

**KATHRYN M. NORBY
 CASS COUNTY RECORDER**

BY SR Dep TX#: **120485**

Page 1 of 2 A000608871



INDEX NO. N.0-11.0

STATEMENT OF EVIDENCE

NORTH QUARTER CORNER OF SECTION 21, TOWNSHIP 136N, RANGE 32W, 5TH P.M.

- 1866 OSCAR E. GARRISON, DEPUTY GOVERNMENT SURVEYOR, SET A POST TO MARK THE CORNER LOCATION. REFERENCES:
22" YELLOW PINE S54 1/2E 29.04 FT
20" YELLOW PINE N65W 26.4 FT
RECORDS ON FILE AT THE MN HISTORICAL SOCIETY, ST. PAUL AND COPIES FILED WITH THE CASS COUNTY HIGHWAY DEPT/SURVEYOR'S OFFICE (CCHD/SO)

- 1926 JOHN M. GREENE, COUNTY SURVEYOR, SET A WELL POINT MIDWAY AND ON LINE BETWEEN THE NE AND NW CORNERS OF SECTION 21 TO MARK THIS CORNER POSITION. REFERENCE: 8 JP S2 E 51.8 FT COUNTY BOOK D, PG 171 INFORMATION ON FILE IN CCHD/SO

- 2006 BRUCE W. SKIPTON, LS 17768, ARRO LAND SURVEYORS LLC, INDICATES HE SET AN IRON PIPE WITH RLS CAP TO MARK THIS CORNER POSITION. CERTIFICATES OF SURVEY NO. 2998 AND NO. 852

- 2014 MARVIN R. KOHOUT, LS 17774, KOHOUT LAND SURVEYING, FOUND SKIPTON'S PIPE AND ACCEPTS IT AS MARKING THE CORNER POSITION. REFERNCES AS SHOWN ON PAGE 1 OF THIS DOCUMENT