

# CERTIFICATE OF LOCATION OF GOVERNMENT CORNER

NE Corner of Section 20, Township 136N Range 32W, 5th p.m., State of Minnesota, County of Cass

At the corner location shown on the sketch:

On 4 SEPT. 2014 found a 1" DIA. IRON PIPE WITH BROKEN RLS CAP, FLUSH WITH BIT. SURFACE  
 Date

left monument as found       lowered monument       removed monument (explain)

On \_\_\_\_\_ placed a \_\_\_\_\_  
 Date

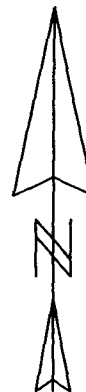
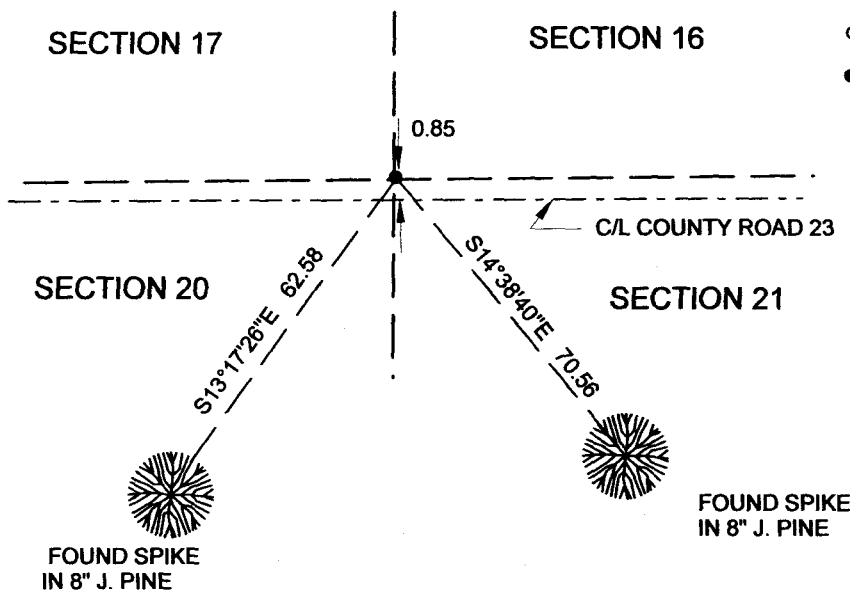
### SKETCH OF REFERENCE TIES

Tie Distances are measured to the spikes.

Cass County Coordinate System (South Zone)  
 N= 257016.34 E= 431502.56

○ Set Re-Rod with RLS cap No. 17774

● Found Pipe



**NOT TO SCALE**

Statement of evidence relative to this corner location is on back of page.

I hereby certify that this document and the data contained herein was prepared by me or under my direct supervision.

Marvin R. Kohout      8 JAN 2015  
 Marvin R. Kohout      Date

License No. 17774

Land surveyor

OFFICE OF COUNTY RECORDER



**A000608870**

**OFFICE OF THE COUNTY RECORDER  
 CASS COUNTY, MINNESOTA  
 CERTIFIED, FILED, AND/OR  
 RECORDED ON**

1/15/2015 11:15:46 AM

AS DOC #: **A000608870**

PAGES: **2**

REC FEES: **0.00**

**KATHRYN M. NORBY  
 CASS COUNTY RECORDER**

BY SR Dep TX#: **120485**

Page 1 of 2 A000608870



**INDEX NO. N.0-09.0**

**STATEMENT OF EVIDENCE**

**NORTHEAST CORNER OF SECTION 20, TOWNSHIP 136N, RANGE 32W, 5<sup>TH</sup> P.M.**

- 1866    OSCAR E. GARRISON, DEPUTY GOVERNMENT SURVEYOR, SET A POST TO MARK THE CORNER LOCATION. REFERENCES:  
4" BL. PINE N 82 ½ E 12.54 FT      4" BL. PINE S 25 ½ E 17.82 FT  
4" BL PINE S 64 ½ W 21.78 FT      5" BL. PINE N 47 W 11.22 FT  
RECORDS ON FILE AT THE MN HISTORICAL SOCIETY, ST. PAUL AND COPIES FILED WITH THE CASS COUNTY HIGHWAY DEPT/SURVEYOR'S OFFICE (CCHD/SO)
  
- 1904    W. H. HALLETT SET POST. REFERENCES: 9" B. PINE N 4 W 48    7" B. PINE N 5 E 44  
10" B. PINE S 6 W 47    8" B. PINE S 17 E 71  
ROAD CALENDAR B, PAGE 6 INFORMATION ON FILE IN CCHD/SO
  
- 1926    JOHN M. GREENE, COUNTY SURVEYOR, SET A 2 ½" X 48" IRON MONUMENT TO MARK THE CORNER POSITION. PROPORTIONAL POSITIONING FROM SE CORNER SEC. 20 TO NE CORNER SEC. 8 AND SW CORNER SEC. 18 TO SE CORNER SEC. 16 COUNTY BOOK D, PAGE 171 INFORMATION ON FILE IN CCHD/SO
  
- 2004?    BRUCE SKIPTON, LS 17768, ARRO LAND SURVEYORS, LLC, SET THE NE AND N1/4 CORNERS OF SECTION 21 AND PROBABLY SET THIS CORNER DURING THE SAME PROJECT. CERTIFICATES OF SURVEY NO. 852 AND NO. 2998
  
- 2014    MARVIN R. KOHOUT, LS 17774, KOHOUT LAND SURVEYING, AND ADAM HANSON, TECHNICIAN, NORTHWOODS SURVEYING, FOUND AN IRON MONUMENT WITH RLS CAP 17768, IN COUNTY ROAD NO. 23. REFERENCES AS SHOWN ON PAGE 1 OF THIS DOCUMENT.