



A000608753

OFFICE OF THE COUNTY RECORDER
CASS COUNTY, MINNESOTA
CERTIFIED, FILED, AND/OR
RECORDED ON

1/12/2015 9:54:28 AM

AS DOC #: A000608753

PAGES: 2

REC FEES: 0.00

KATHRYN M. NORBY
CASS COUNTY RECORDER

BY SR Dep TX#: 120394

Page 1 of 2 A000608753

Twp 139 Rge 27 Index No. E.0-24.6

CERTIFICATE OF LOCATION OF GOVERNMENT CORNER

Meander Corner #2 of Sections 1 & 12, Township 139 N., Range 27 W., 5th P.M.
State of Minnesota, County of Cass

At the corner location shown on the sketch:

On _____ found _____

- left monument as found
- lowered monument
- removed monument (explain)

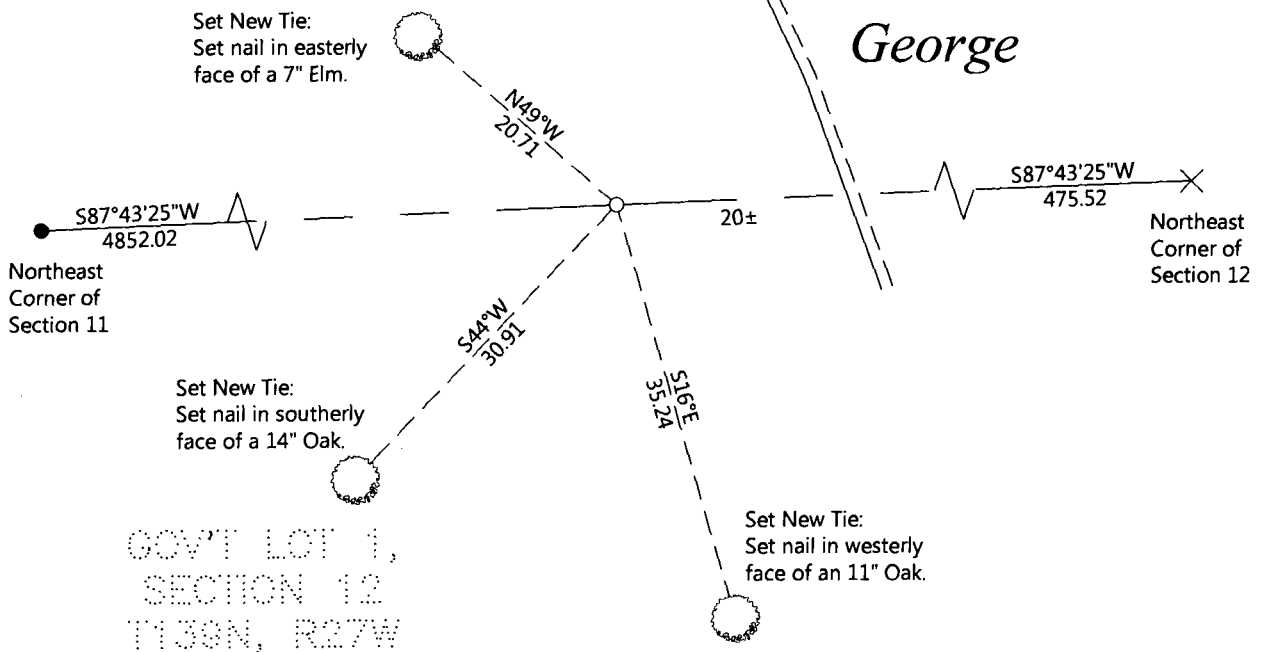
On 09-26-2014 placed a 3/4" diameter iron pipe, with a cap stamped (RLS 21367),
flush with the ground.

SKETCH OF REFERENCE TIES (NOT TO SCALE)



GOV'T LOT 6,
SECTION 1,
T139N, R27W

Lake
George



NOTE: All bearings are true.

Statement of evidence relative to this corner location is on the back of this page.

I hereby certify that this survey, plan, or report was prepared by me or under my direct supervision and that I am a duly Licensed land Surveyor under the laws of the State of Minnesota. I further certify that this united States public land survey monument record is correct and complete to the best of my knowledge and belief.

Joshua M. Dickerson, Land Surveyor

Date 1/9/15

MN License No. 47544



Index No. E.0-24.6

STATEMENT ON EVIDENCE

Meander Corner No.2 of Sections 1 & 12, Township 139 North, Range 27 West of the 5th Principal Meridian.

In 1864, Johnson and Thornton, U.S. Deputy Surveyors, set a wood post to mark the corner location while marking subdivision lines of the township and established bearing trees as follows: a 8" Jack Pine S 42° W 125 links; a 6" Elm N 82° W 130 links;

Record on file with the Minnesota Historical Society in St. Paul, MN and copies filed with the Cass County Highway Department, Surveyors Office (CCHD/SO).

On September 26, 2014 , a Northern Engineering & Consulting survey crew searched for corner and finding nothing, determined corner to be lost. They set a ¾" iron pipe with cap stamped RLS 21367 on line between the NW corner of Section 12 and the computed NE corner of Section 12, in Lake George. They marked 3 new ties as shown on the front of this certificate. The monument set is accepted as marking the line between Sections 1 and 12 near the shore of Lake George.

County Coordinates (Cass County North)

Northing 126319.33
Easting 546452.79