



A000608752

OFFICE OF THE COUNTY RECORDER
CASS COUNTY, MINNESOTA
CERTIFIED, FILED, AND/OR
RECORDED ON

1/12/2015 9:54:27 AM

AS DOC #: A000608752

PAGES: 2

REC FEES: 0.00

KATHRYN M. NORBY
CASS COUNTY RECORDER

BY SR Dep TX#: 120394

Page 1 of 2 A000608752

Twp 139 Rge 27 Index No. E.0-23.0

CERTIFICATE OF LOCATION OF GOVERNMENT CORNER

North Quarter Corner of Section 12, Township 139 N., Range 27 W., 5th P.M.
State of Minnesota, County of Cass

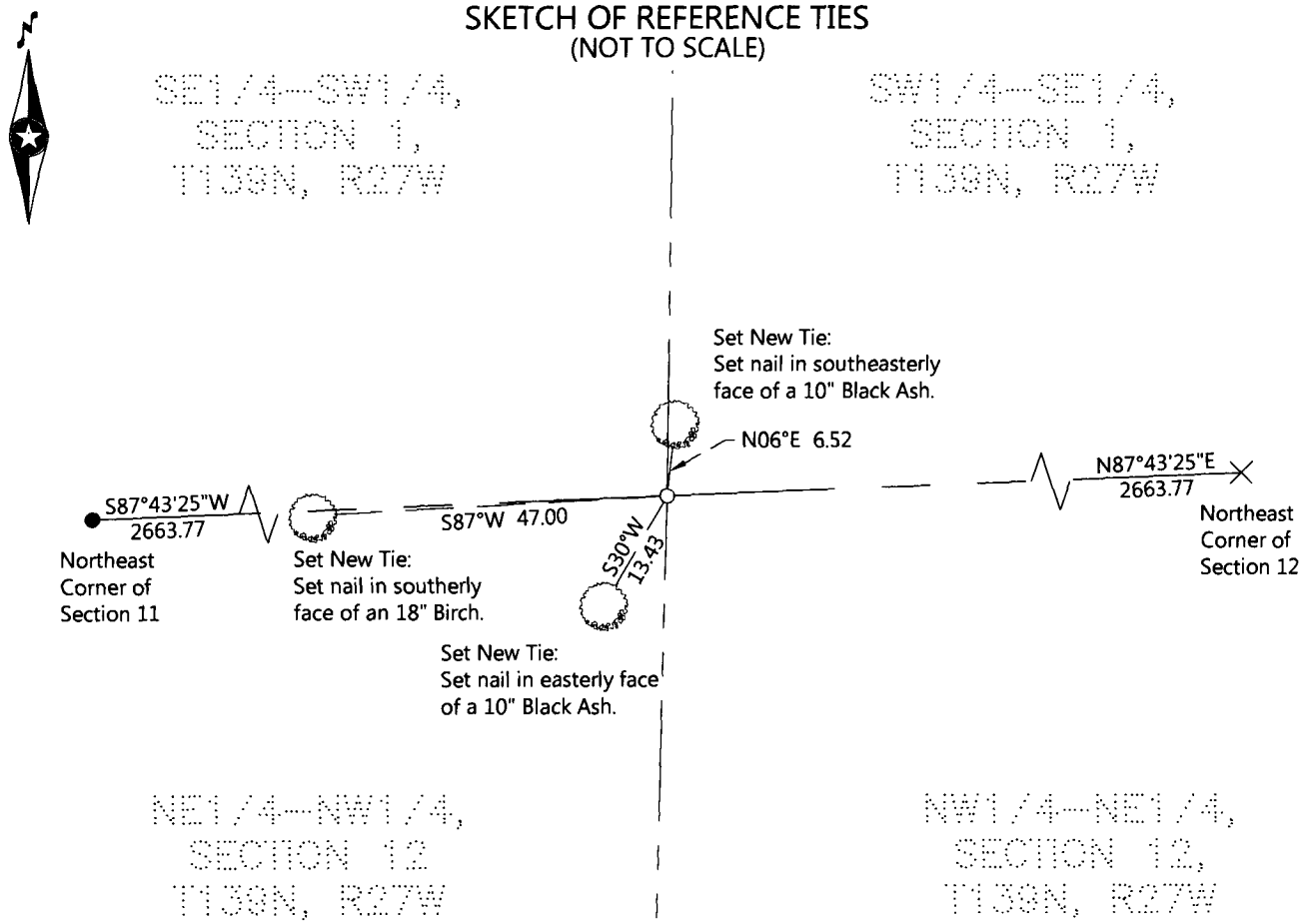
At the corner location shown on the sketch:

On _____ found _____

- left monument as found
- lowered monument
- removed monument (explain)

On 12-04-2014 placed a 5/8" diameter rebar with a 2-1/2" cap stamped
"DICKERSON NECI RLS #47544, flush with the ground.

SKETCH OF REFERENCE TIES (NOT TO SCALE)



NOTE: All bearings are true.

Statement of evidence relative to this corner location is on the back of this page.

I hereby certify that this survey, plan, or report was prepared by me or under my direct supervision and that I am a duly Licensed land Surveyor under the laws of the State of Minnesota. I further certify that this United States public land survey monument record is correct and complete to the best of my knowledge and belief.


Joshua M. Dickerson, Land Surveyor

Date 1/9/15 MN License No. 47544

Index No. E.O-23.0**STATEMENT ON EVIDENCE****North Quarter Corner of Section 12, Township 139 North, Range 27 West of the 5th Principal Meridian.**

In 1864, Johnson and Thornton, U.S. Deputy Surveyors, set a wood post to mark the corner location while marking subdivision lines of the township and established bearing trees as follows: a 4" Tamarack North 12 links; a 4" Tamarack S 45° E 11 links;

Record on file with the Minnesota Historical Society in St. Paul, MN and copies filed with the Cass County Highway Department, Surveyors Office (CCHD/SO).

On December 4, 2014, a Northern Engineering & Consulting survey crew searched for corner and finding nothing, determined corner to be lost. They set a rebar with cap stamped RLS 47544 at the lost, single proportion position between the NW corner of Section 12 and the computed NE corner of Section 12, in Lake George. They marked 3 new ties as shown on the front of this certificate. The monument set is accepted as marking the lost position of the original corner.

County Coordinates (Cass County North)

Northing	126232.42
Easting	544266.27