



A000608749

OFFICE OF THE COUNTY RECORDER
CASS COUNTY, MINNESOTA
CERTIFIED, FILED, AND/OR
RECORDED ON

1/12/2015 9:54:24 AM

AS DOC #: A000608749

PAGES: 2

REC FEES: 0.00

KATHRYN M. NORBY
CASS COUNTY RECORDER

BY SR _____ Dep TX#: 120394

Page 1 of 2
A000608749

Twp 139 Rge 27 Index No. C.0-21.0

CERTIFICATE OF LOCATION OF GOVERNMENT CORNER

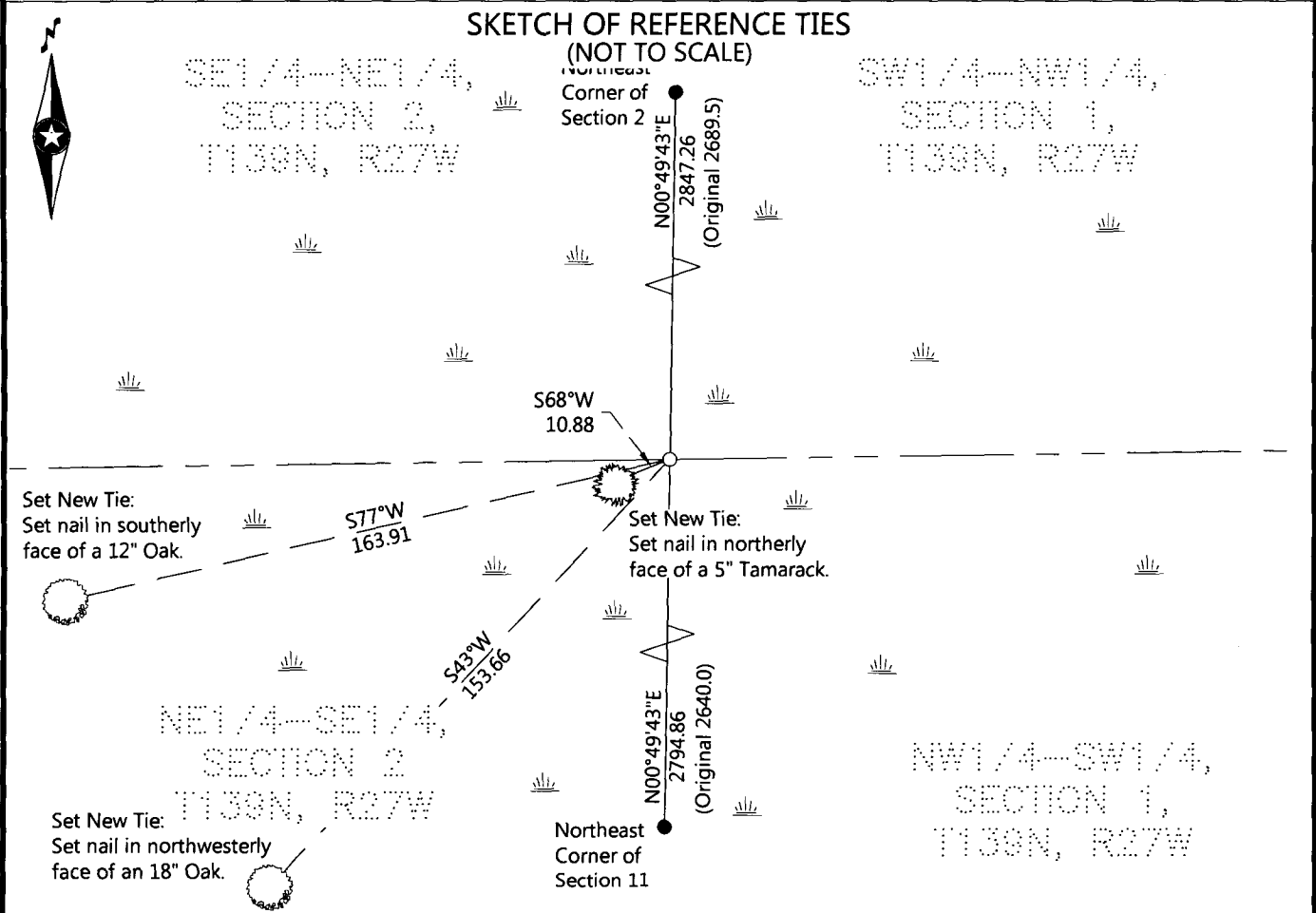
East Quarter Corner of Section 2, Township 139 N., Range 27 W., 5th P.M.
State of Minnesota, County of Cass

At the corner location shown on the sketch:

On _____ found _____

- left monument as found
- lowered monument
- removed monument (explain)


On 10-10-2014 placed a 3/4" diameter iron pipe, with a cap stamped (RLS 47544),
2"± above surface level in a swamp.



NOTE: All bearings are true.

Statement of evidence relative to this corner location is on the back of this page.

I hereby certify that this survey, plan, or report was prepared by me or under my direct supervision and that I am a duly Licensed land Surveyor under the laws of the State of Minnesota. I further certify that this United States public land survey monument record is correct and complete to the best of my knowledge and belief.


Joshua M. Dickerson, Land Surveyor
Date 1/9/15 MN License No. 47544



Index No. C.O-21.0

STATEMENT ON EVIDENCE

East Quarter Corner of Section 2, Township 139 North, Range 27 West of the 5th Principal Meridian.

In 1864, Johnson and Thornton, U.S. Deputy Surveyors, set a wood post to mark the corner location while marking subdivision lines of the township and established bearing trees as follows: a 5" Tamarack S 20° W 14 links; a 7" Spruce East 6 links;
Record on file with the Minnesota Historical Society in St. Paul, MN and copies filed with the Cass County Highway Department, Surveyors Office (CCHD/SO).

In 1913, Harry Todd, Deputy Cass County Surveyor, in County Survey Record Book "A", pages 576-580, also in Curo Book #173, Pages 53-75, shows that he set the corner.
Information on file in the CCHD/SO.

In 1936, Civilian Conservation Corps, Washburn Lake Book #7, Page 6, shows at the ¼ corner is 42.75 chains north of the SE corner of Section 2. 8.5" Tamarack stub S 55° W 68 links, scribed BT ¼ S BT
Information on file in the CCHD/SO.

On October 10, 2014, a Northern Engineering & Consulting survey crew searched for corner and finding nothing, determined corner to be lost. They set a ¾" iron pipe with cap stamped RLS 47544, up 2" in swamp, at the single proportion position between the NE and SE corners of Section 2. They marked 3 new ties as shown on the front of this certificate. The monument set is accepted as marking the lost position of the original corner.

County Coordinates (Cass County North)

Northing 128921.17
Easting 541645.01