



A000608518

OFFICE OF THE COUNTY RECORDER  
CASS COUNTY, MINNESOTA  
CERTIFIED, FILED, AND/OR  
RECORDED ON

12/26/2014 12:47:26 PM

AS DOC #: A000608518

PAGES: 2

REC FEES: 0.00

KATHRYN M. NORBY  
CASS COUNTY RECORDER

BY SR \_\_\_\_\_ Dep TX#: 120163

Page 1 of 2 A000608518

Twp 142 Rge 27 Index No. A.0-02.0

### CERTIFICATE OF LOCATION OF GOVERNMENT CORNER

West Sixteenth corner of Section 6, Township 142 N., Range 27 W., 5th P.M.  
State of Minnesota, County of Cass

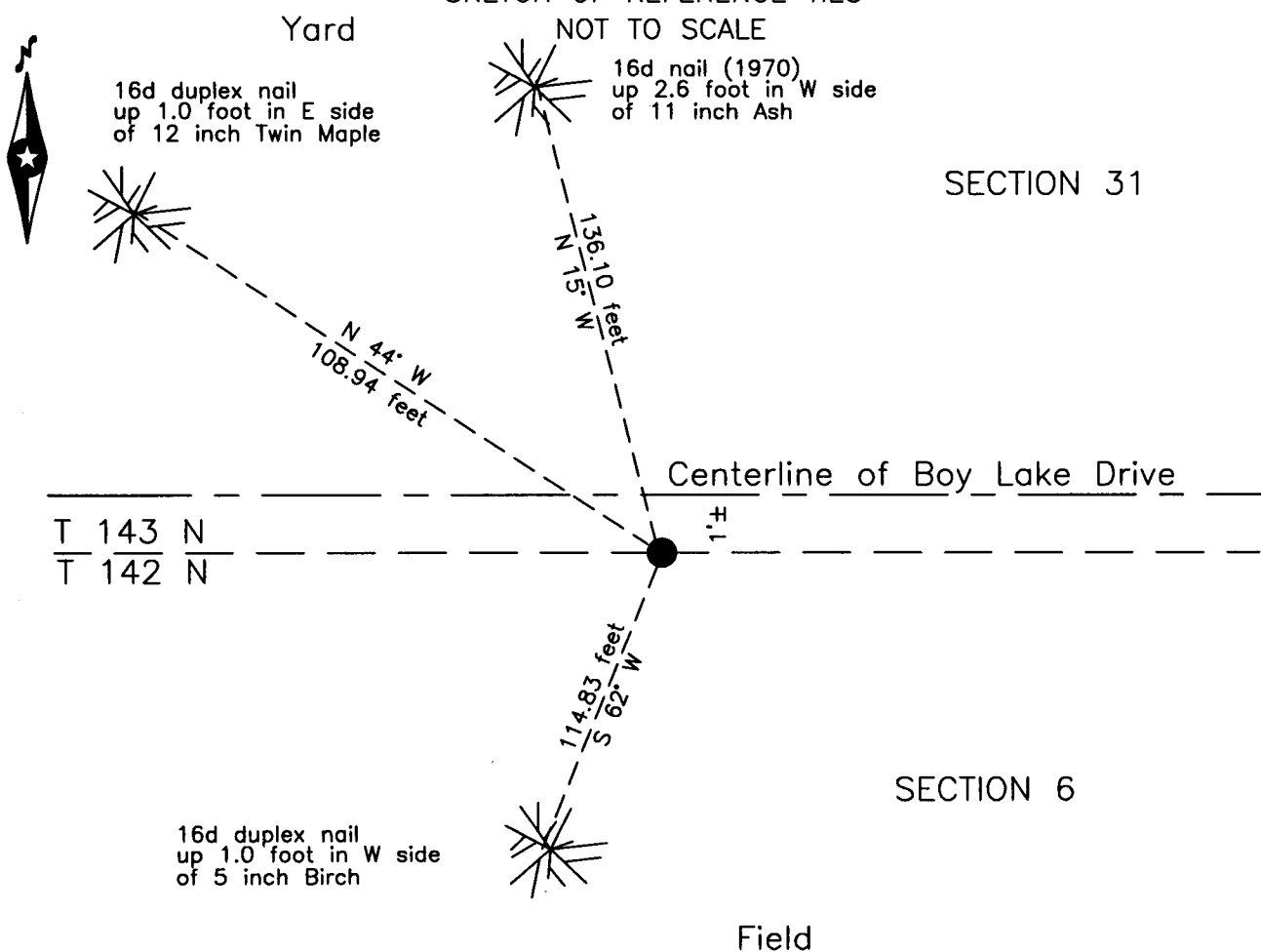
At the corner location shown on the sketch:

On 19 June 2009 found a USFS concrete cylinder with brass cap, down 1.1 foot,  
1.5 feet± south of centerline Boy Lake Drive.

left monument as found     lowered monument     removed monument (explain)

On 18 Dec. 2014 placed a magnetic nail, 1.0 foot south of the new centerline  
of Boy Lake Drive.


#### SKETCH OF REFERENCE TIES NOT TO SCALE



NOTE:  
All bearings are true

Statement of evidence relative to this corner location is on the back of this page.

I hereby certify that this survey, plan or report was prepared by me or under my direct supervision and that I am a duly Licensed Land Surveyor under the laws of the State of Minnesota.

  
Terry L. Freeman, Cass County Surveyor  
Date 12/24/14 MN License No. 21367



**Index No. A.0-02.0**

Statement of Evidence

**West One Sixteenth corner Section 6, Township 142 North, Range 27 West, 5th Principal Meridian.**

- 1920 E.G. Harrington, U.S. Cadastral Engineer, assisted by D.B. Clement, U.S. Surveyor, GLO, Reestablishment of a portion of the Exteriors and Subdivisional Lines Township 142 North, Range 27 West, on file with the Minnesota Historical Society in St. Paul, Minnesota, copies are filed with the CCHD/SO, states "Set an iron post, 3 ft. long, 1 ins. diam., 26 ins. in the ground, for the W. 1/16 sec. cor. with brass cap". Lists the following witnesses:  
 2' Mound of stone North (no distance) NE House cor S 61°28' W About 7 chains (462 feet)
- June C. Krause, technician, United States Department of Agriculture Forest Service (USFS), T 143N R 27 W Book 2, 1970 page 53, on file in the USFS Cass Lake Office, states Found iron post, cap missing. And further states "To perpetuate this corner I set a 6" dia. 24" long cylindrical concrete monument 8" below surface of road with a 3" dia. Brass tablet" and witnessed as follows:  
 6" Ash N 15° W 136.1 feet 4" Cedar Post North 29.6 feet  
 6" Oak N 34° W 164.7 feet
- Oct W.H. Okerman, LS 6807, USFS, T 143N R 27 W Book 2, page 53, on file in the USFS Cass Lake Office, found 1975 the 1970 concrete cylinder. A Certificate of Location of Government Corner was filed in the Cass County Records Office (CCRO) as Document Number 222945.
- June B. Hippen, technician, records of the CCHD/SO, found USFS brass cap in concrete cylinder, down 1.1 feet, 1.5 2009 feet south of centerline of Boy Lake Drive, a 90d spike found during excavation was reset over monument and added witnesses as follows:  
 11" Ash N 15° W 136.10 feet (1970) 5" Birch S 14° W 34.76 feet  
 12" Twin Maple N 44° W 108.94 feet
- Dec. B. Hippen, technician, records of the CCHD/SO, set a mag nail over the brass cap monument, 1 foot, more or 2014 less, South of the new centerline of Boy Lake Drive, the 2009 witnesses are all good.  
 The monument, recovered and established references for the position are shown on the face of this document.

**Analysis of the recovered record data, field evidence and survey measurements, indicates that the monument recovered by CCHD/SO in 2009 is the accepted location of this corner.**

**County Coordinates (Cass County North)**

**Northing 227590.43**

**Easting 515922.39**