



**A000608482**  
**OFFICE OF THE COUNTY RECORDER**  
**CASS COUNTY, MINNESOTA**  
**CERTIFIED, FILED, AND/OR**  
**RECORDED ON**  
 12/26/2014 9:18:29 AM  
 AS DOC #: A000608482  
 PAGES: 2  
 REC FEES: 0.00  
**KATHRYN M. NORBY**  
**CASS COUNTY RECORDER**  
 BY SR \_\_\_\_\_ Dep TX#: 120142

**CERTIFICATE OF LOCATION OF GOVERNMENT CORNER**

I hereby certify that this survey, plan, or report was prepared by me or under my direct supervision and that I am a duly Licensed Land Surveyor under the laws of the State of Minnesota.

*Patrick A. Trottier*

PATRICK A. TROTTIER

Date: 12-16-14 License No: 41002  
 41002

East Quarter Corner of Section 13, Township 138 North, Range 30 West, 5th P.M.

On 4-22-2013 found a PK Nail flush, 6' east of centerline 24th Ave SW

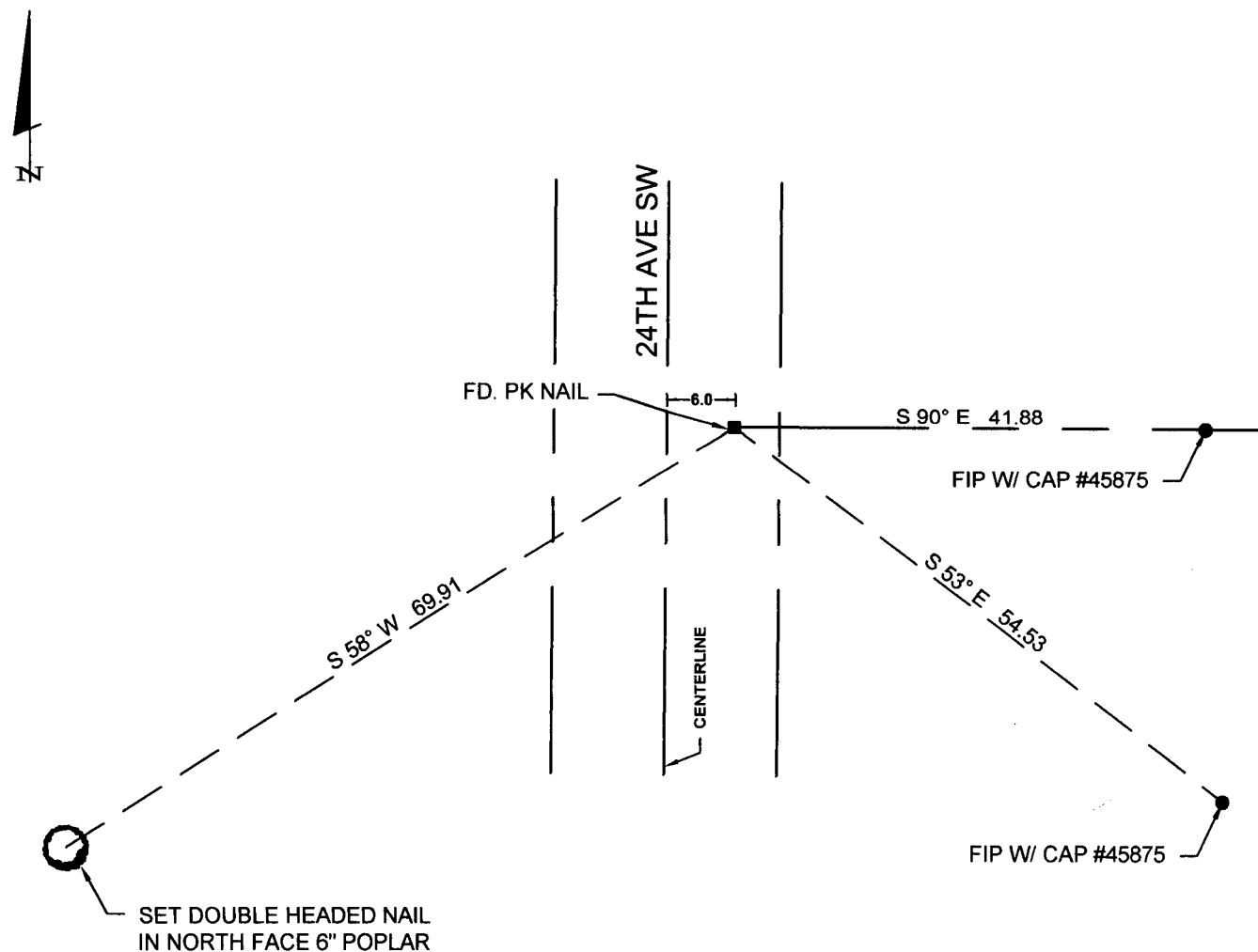
left monument as found,  lowered monument,  removed monument (explain)

On \_\_\_\_\_ placed a \_\_\_\_\_

**SKETCH OF REFERENCE TIES**

Corner Index: **L-25**

Not to Scale





**Statement of Evidence**

**East quarter corner, Section 13, Township 138 North, Range  
30 West, 5<sup>th</sup> Principal Meridian, Cass County, Minnesota**

1865 – Original U.S. Government Survey establishing this corner was performed. A wood post was set marking its location from which the following witness was established:

20" N. Pine    N 51° W    240 links

Records on file with the Secretary of State and copies are in the Cass County Highway Department/Surveyor's Office (CCHD/SO).

2004 – David Landecker, PLS 17008, on Certificate of Survey indicates a monument set at this corner location by single proration between NE and SE corners of Section 13.

2013 – Patrick Trottier, PLS 41002, found and accepted as corner a PK nail which fits within tolerance of prior Landecker survey and established the witnesses as shown on the face of this document.