



A000608293

OFFICE OF THE COUNTY RECORDER
CASS COUNTY, MINNESOTA
CERTIFIED, FILED, AND/OR
RECORDED ON

12/18/2014 10:49:17 AM

AS DOC #: A000608293

PAGES: 2

REC FEES: 0.00

KATHRYN M. NORBY
CASS COUNTY RECORDER

BY SR _____ Dep

Twp 142 Rge 27 Index No. E.0-06.0

CERTIFICATE OF LOCATION OF GOVERNMENT CORNER

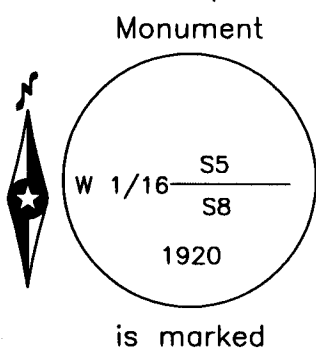
West Sixteenth corner of Section 5&8, Township 142 N., Range 27 W., 5th P.M.
State of Minnesota, County of Cass

At the corner location shown on the sketch:

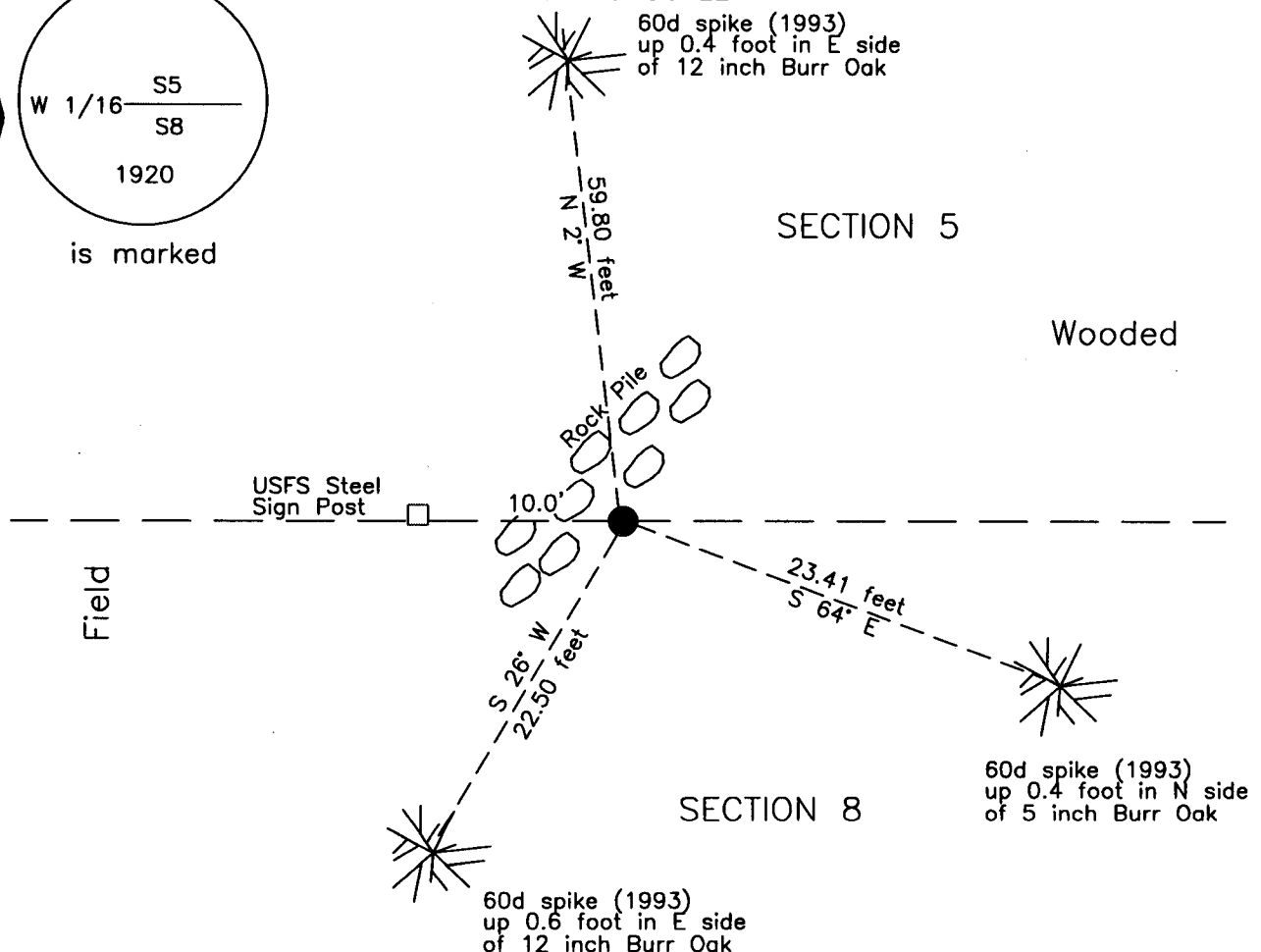
On 2 July 2009 found a 1 inch outside diameter iron pipe with GLO brass cap,
up 0.3 foot, at edge of rock pile.

left monument as found lowered monument removed monument (explain)

On _____ placed _____




SKETCH OF REFERENCE TIES NOT TO SCALE



NOTE:
All bearings are true

Statement of evidence relative to this corner location is on the back of this page.

I hereby certify that this survey, plan or report was prepared by me or under my direct supervision and that I am a duly Licensed Land Surveyor under the laws of the State of Minnesota.


 Terry L. Freeman, Cass County Surveyor
 Date 12/17/14 MN License No. 21367





Index No. E.0-06.0

Statement of Evidence

West One Sixteenth corner Section 8, Township 142 North, Range 27 West, 5th Principal Meridian.

1920 E.G. Harrington, U.S. Cadastral Engineer, assisted by D.B. Clement, U.S. Surveyor, GLO, Reestablishment of a portion of the Exteriors and Subdivisional Lines Township 142 North, Range 27 West, on file with the Minnesota Historical Society in St. Paul, Minnesota, copies are filed with the CCHD/SO, states "Set an iron post, 3 ft. long, 1 ins. diam., 26 ins. in the ground, for the W. 1/16 sec. cor. with brass cap". Lists the following witnesses:
8" Birch N 48 3/4° E 116 links(76.56 feet) 8" Birch S 55° W 183 links (120.78 feet)

July 1978 R. Ekstrom, technician, United States Department of Agriculture Forest Service (USFS), T 142N R 27 W Book 1, page 29, on file in the USFS Cass Lake Office, states Placed FSLP on the following:
6" Maple S 47° E 9 feet

March 1993 R. Main, technician, USFS, T 142N R 27 W Book 1, page 29, on file in the USFS Cass Lake Office, states Found GLO iron surrounded by rock and 1978 Maple with tag. Witness as follows:
12" W. Oak S 26° W 22.50 feet 4" W. Oak S 64° E 23.41 feet
11" W. Oak N 2° W 59.80 feet Steel Sign Post West 1 foot

July 2009 B. Hippen, technician, records of the CCHD/SO, found 1 inch outside diameter iron pipe, with GLO brass cap, up 0.3 foot, at edge of rock pile. USFS 1993 witnesses good.
The monument, recovered and established references for the position are shown on the face of this document.

Analysis of the recovered record data, field evidence and survey measurements, indicates that the monument recovered by CCHD/SO in 2009 is the accepted location of this corner.

County Coordinates (Cass County North)
Northing 222685.99
Easting 521018.01