



A000608291

OFFICE OF THE COUNTY RECORDER
CASS COUNTY, MINNESOTA
CERTIFIED, FILED, AND/OR
RECORDED ON

12/18/2014 10:49:15 AM

AS DOC #: A000608291

PAGES: 2

REC FEES: 0.00

KATHRYN M. NORBY
CASS COUNTY RECORDER

BY SR _____ Dep

Twp 142 Rge 27 Index No. E.0-04.0

CERTIFICATE OF LOCATION OF GOVERNMENT CORNER

East Sixteenth corner of Section 6&7, Township 142 N., Range 27 W., 5th P.M.

State of Minnesota, County of Cass

At the corner location shown on the sketch:

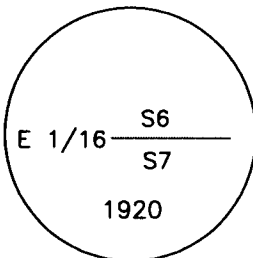
On 1 July 2009 found a 1 inch outside diameter iron pipe with GLO brass cap,
up 0.5 foot, under barbed wire fence.

left monument as found lowered monument removed monument (explain)

On _____ placed _____

Monument

SKETCH OF REFERENCE TIES
NOT TO SCALE

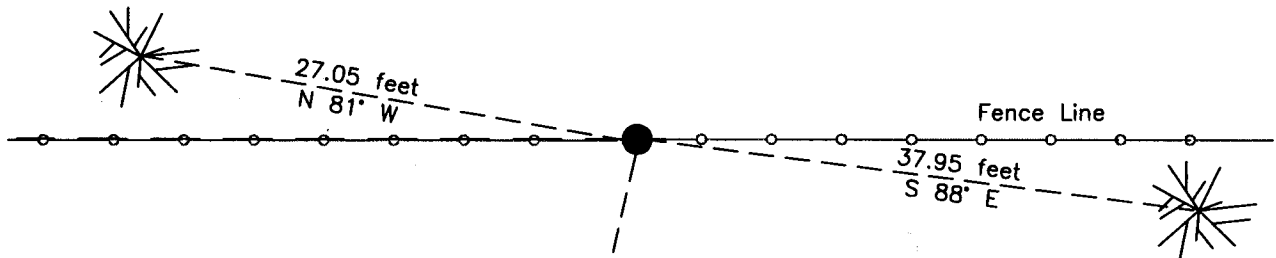


is marked

Old Pasture

SECTION 6

60d spike (1993)
up 0.1 foot in N side
of 5 inch Burr Oak



60d spike (1993)
up 0.4 foot in S side
of 7 inch Burr Oak

SECTION 7

Logged

60d spike (1993)
up 0.2 foot in E side
of 5 inch Burr Oak

NOTE:
All bearings are true

Statement of evidence relative to this corner location is on the back of this page.

I hereby certify that this survey, plan or report was prepared by me or under my direct supervision and that I am a duly Licensed Land Surveyor under the laws of the State of Minnesota.

Terry L. Freeman, Cass County Surveyor
Date 12/17/14 MN License No. 21367





Index No. E.0-04.0

Statement of Evidence

East One Sixteenth corner Section 7, Township 142 North, Range 27 West, 5th Principal Meridian.

1920 E.G. Harrington, U.S. Cadastral Engineer, assisted by D.B. Clement, U.S. Surveyor, GLO, Reestablishment of a portion of the Exteriors and Subdivisional Lines Township 142 North, Range 27 West, on file with the Minnesota Historical Society in St. Paul, Minnesota, copies are filed with the CCHD/SO, states "Set an iron post, 3 ft. long, 1 ins. diam., 26 ins. in the ground, for the E. 1/16 sec. cor. with brass cap". Lists the following witnesses:
14" White Oak N 46° E 199 links(131.34 feet) 14" Birch S 36 1/4° E 30 links (19.18 feet)

Oct. L Wittholt, United States Department of Agriculture Forest Service (USFS), T 142N R 27 W Book 3, page 17,
1972 on file in the USFS Cass Lake Office, states placed tag on the following:
7" Maple S 18° W 5 feet

March R. Main, technician, USFS, T 142N R 27 W Book 3, page 17, on file in the USFS Cass Lake Office, states
1993 Found GLO iron up 6 inches on west side of 8 inch fence post. Found GLO Oak stump and 1972 Maple with tag.
Witness as follows:
5" W. Oak S 14° W 46.45 feet 7" W. Oak S 88° E 37.95 feet
5" W. Oak N 81° W 27.05 feet

July B. Hippen, technician, records of the CCHD/SO, found 1 inch outside diameter iron pipe, with GLO brass cap,
2009 up 0.5 foot, under barbed wire fence. USFS 1993 witnesses good.

The monument, recovered and established references for the position are shown on the face of this document.

Analysis of the recovered record data, field evidence and survey measurements, indicates that the monument recovered by CCHD/SO in 2009 is the accepted location of this corner.

County Coordinates (Cass County North)

Northing 222432.46

Easting 518419.84