



A000608288

OFFICE OF THE COUNTY RECORDER  
CASS COUNTY, MINNESOTA  
CERTIFIED, FILED, AND/OR  
RECORDED ON

12/18/2014 10:49:12 AM

AS DOC #: A000608288

PAGES: 2

REC FEES: 0.00

KATHRYN M. NORBY  
CASS COUNTY RECORDER

BY SR Dep

Twp 142 Rge 27 Index No. C-25

# CERTIFICATE OF LOCATION OF GOVERNMENT CORNER

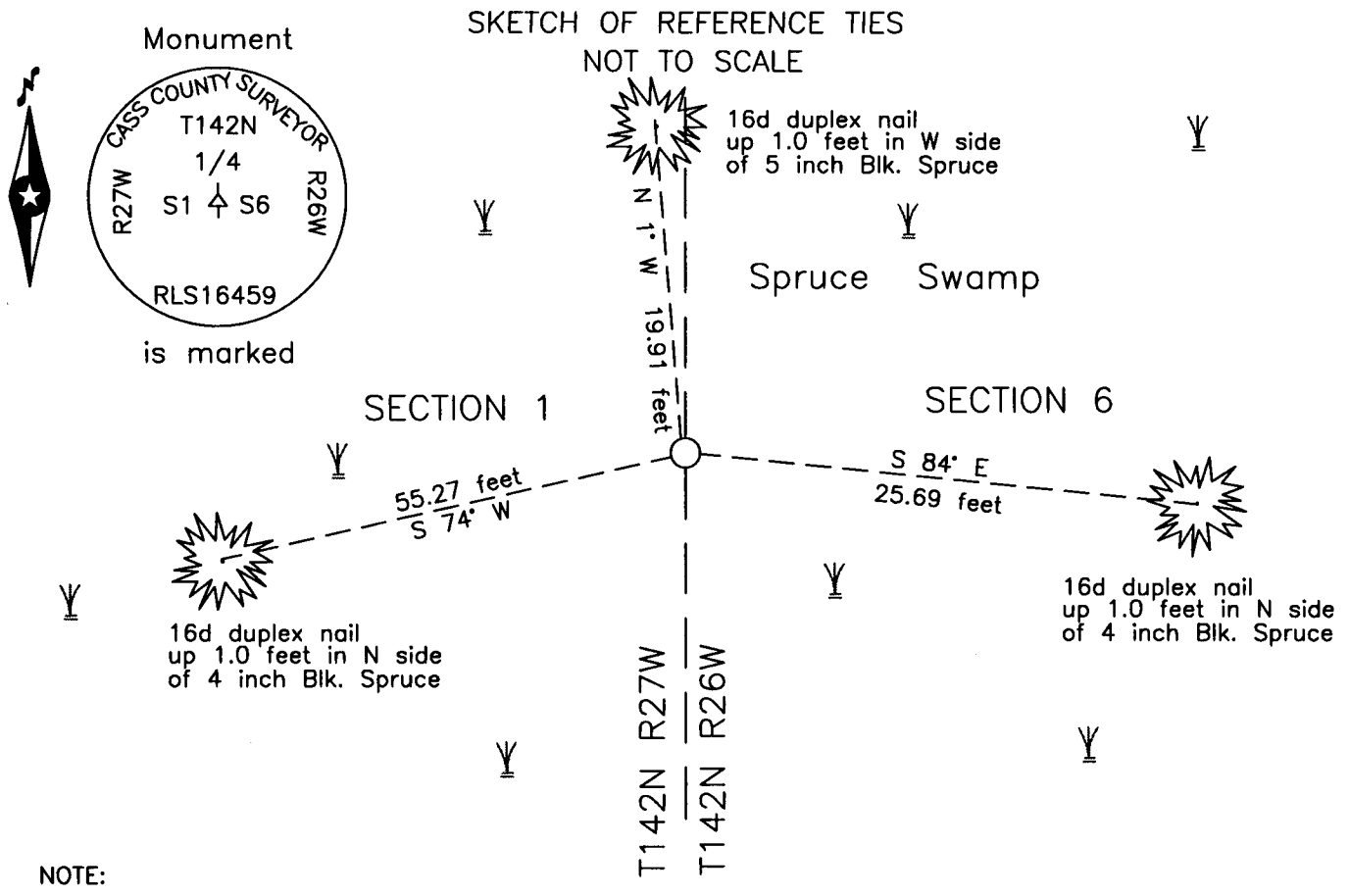
East Quarter of Section 1, Township 142 N., Range 27 W., 5th P.M.  
State of Minnesota, County of Cass

At the corner location shown on the sketch:

On \_\_\_\_\_ found \_\_\_\_\_

left monument as found     lowered monument     removed monument (explain)

On 7 Jan. 2005 placed a 1 inch by 30 inch Aluminum tube with aluminum cap  
up 1.0 foot in Spruce Swamp.



NOTE:  
All bearings are true

Statement of evidence relative to this corner location is on the back of this page.

I hereby certify that this survey, plan or report was prepared by me or under my direct supervision and that I am a duly Licensed Land Surveyor under the laws of the State of Minnesota.

Terry L. Freeman, Cass County Surveyor  
Date 12/17/14 MN License No. 21367



Statement of Evidence

**East Quarter corner Section 1, Township 142 North, Range 27 West, 5th Principal Meridian.**

- Nov. 1872 Hayward and Griffin, GLO Deputy Surveyors, in the notes of the Township line between Range 26 and 27, set a post for the original corner and referenced it as follows:  
6" Tam S 5° E 161 links (106.26 feet) 6" Tam S 55° W 55 links (36.30 feet)
- Nov. 1873 P.H.Conger, GLO Deputy Surveyor, in the notes of the Subdivision of Township 142 North, Range 27 West, Meander of Clear lake began at this corner.  
The above record is on file with the Minnesota Historical Society in St. Paul, Minnesota, copies are filed with the Cass County Highway Department, Surveyor's Office (CCHD/SO).
- Nov. 1963 W.H. Okerman, LS 6807, United States Department of Agriculture Forest Service(USFS), T 142N R 26 W, Book 2, page 10, on file in the USFS Cass Lake Office, states "No evidence found."
- April 2004 B. Hippen, technician, records of the CCHD/SO, found a 2 inch square wood post, up 3.8 feet in open Tamarack bog, survey measurements show this post is 85 feet west of a line between the NW and SW corners of Section 6.
- Jan. 2005 B. Hippen, technician, records of the CCHD/SO, set a 1 inch outside diameter aluminum tube with aluminum cap, up 1.0 foot, in Spruce swamp at the single proportion, lost position between the recovered northeast and southeast corners of Section 1 and witnessed as follows:  
5" Blk. Spruce N 1° W 19.91 feet 4" Blk. Spruce S 84° E 25.69 feet  
4" Blk. Spruce S 74° W 55.27 feet

The monument, recovered and established references for the position are shown on the face of this document.

**Analysis of the recovered record data, field evidence and survey measurements, indicates that the monument set in 2005 by the CCHD/SO in is the accepted location of this corner.**

County Coordinates (Cass County North)  
Northing 224869.85  
Easting 546521.25