



A000608141

OFFICE OF THE COUNTY RECORDER
CASS COUNTY, MINNESOTA
CERTIFIED, FILED, AND/OR
RECORDED ON

12/12/2014 10:06:14 AM

AS DOC #: A000608141

PAGES: 2

REC FEES: 0.00

KATHRYN M. NORBY
CASS COUNTY RECORDER

BY SR _____ Dep

Twp 135 Rge 30 Index No. N.0-23.0

CERTIFICATE OF LOCATION OF GOVERNMENT CORNER

North Quarter corner of Section 24, Township 135 N., Range 30 W., 5th P.M.
State of Minnesota, County of Cass

At the corner location shown on the sketch:

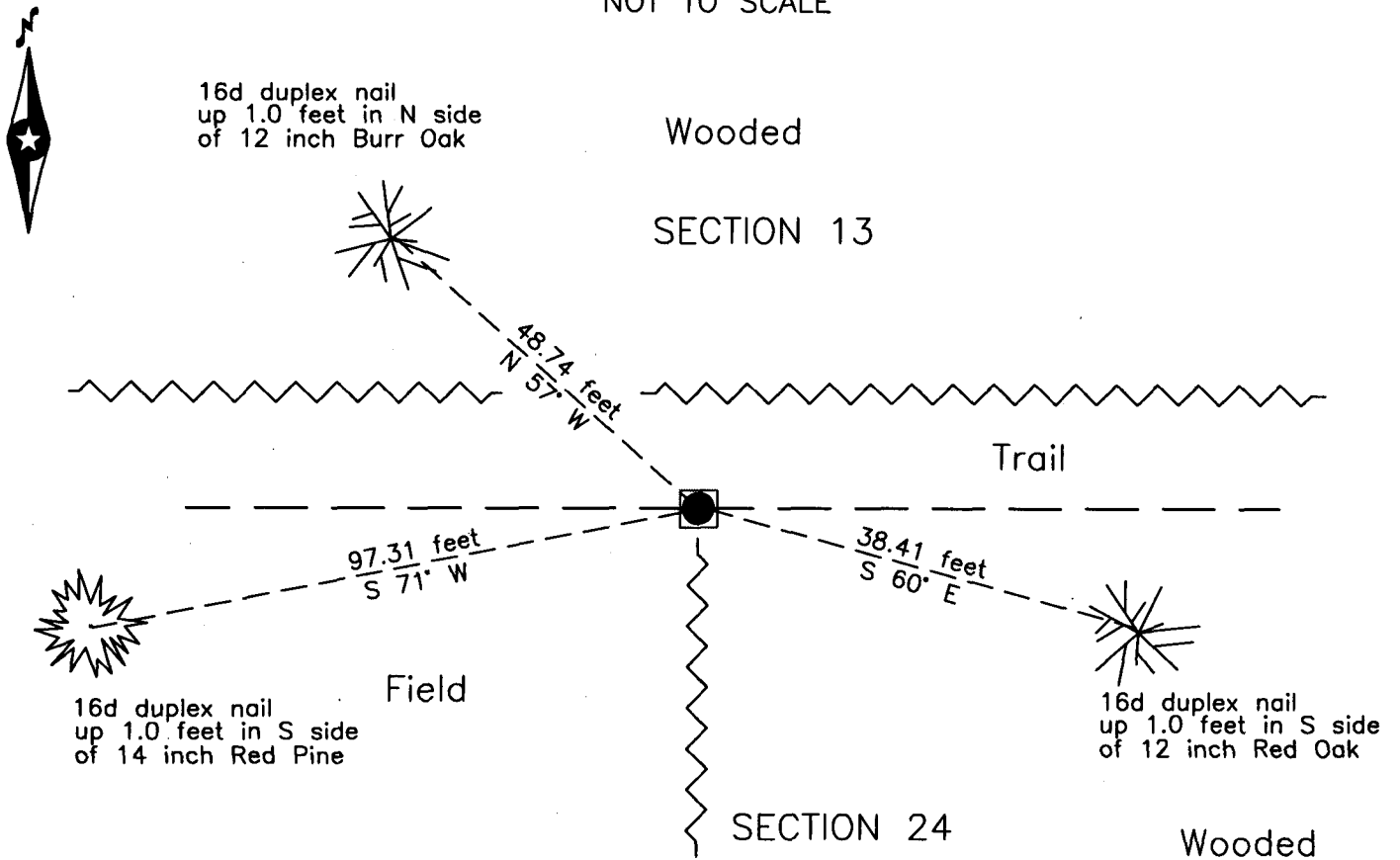
On 17 Dec 2009 found a square 3 inch concrete post with a 3 inch metal disk on
a 1/2 inch rod, up 1.6 feet, near northeast corner of field.

left monument as found lowered monument removed monument (explain)

On _____ placed _____

Wooded

SKETCH OF REFERENCE TIES NOT TO SCALE



NOTE:
All bearings are true

Statement of evidence relative to this corner location is on the back of this page.

I hereby certify that this survey, plan or report was prepared by me or under my direct supervision and that I am a duly Licensed Land Surveyor under the laws of the State of Minnesota.

Terry L. Freeman, Cass County Surveyor
Date 12/10/14 MN License No. 21367



**Index No. N.0-23.0**Statement of Evidence**North Quarter corner of Section 24, Township 135 North, Range 30 West, 5th Principal Meridian.**

- Oct. 1869 T.B. Walker, General Land Office (GLO) Deputy Surveyor, in the notes of the subdivision of Township 135 North, Range 30 West, set a post for the original corner and referenced it as follows:
3" Aspen S 19° E 23 links (15.18 feet) 4" Aspen N 1/2° W 31 links (20.46 feet)
The above record is on file with the Minnesota Historical Society in St. Paul, Minnesota, copies are filed with the Cass County Highway Department, Surveyor's Office (CCHD/SO).
- Oct. 1912 Wm. Hallett, in a Surveyor's Report on a Home Brook Township Petition for County Road, on file at the Cass County Highway Department, indicates a road on true line from the northwest corner of Section 19 to the northeast corner of Section 24.
- July 1922 B. Beach, Deputy Cass County Surveyor, Curo Book 172-A, page 89, on file in the CCHD/SO, states "At a pt. 154.3' N. of sta. 13222.4' E we set a cement monument for the ¼ S. cor. bet. sec.13-24."
- Dec. 2009 B. Hippen, technician, records of the CCHD/SO, recovered a 3 inch square cement post with a 3 inch metal disc on top of a ½ inch rod near the northeast corner of a field and witnessed as follows:
12" Burr Oak N 57° W 48.74 feet 12" R. Oak S 60° E 38.41 feet
14" N. Pine S 71° W 97.31 feet
- Dec. 2014 B. Hippen, technician, records of the CCHD/SO, found the monument and witnesses from 2009. The monument, recovered and established references for the position are shown on the face of this document.

Analysis of the recovered record data, field evidence and survey measurements, indicates that the monument recovered in 2009 by CCHD/SO is the accepted location of this corner.

County Coordinates (Cass County South)

Northing 225427.42

Easting 516125.17