



A000608140

OFFICE OF THE COUNTY RECORDER
CASS COUNTY, MINNESOTA
CERTIFIED, FILED, AND/OR
RECORDED ON

12/12/2014 10:06:13 AM

AS DOC #: A000608140

PAGES: 2

REC FEES: 0.00

KATHRYN M. NORBY
CASS COUNTY RECORDER

BY SR _____ Dep

Twp 135 Rge 30 Index No. N.0-21.0

CERTIFICATE OF LOCATION OF GOVERNMENT CORNER

Northeast of Section 23, Township 135 N., Range 30 W., 5th P.M.
State of Minnesota, County of Cass

At the corner location shown on the sketch:

On 16 Aug 2006 found a square 3 inch concrete post with a 3 inch metal disk on a 1/2 inch rod, bent and buried, with concrete broken. straightened, now up 1.9 feet

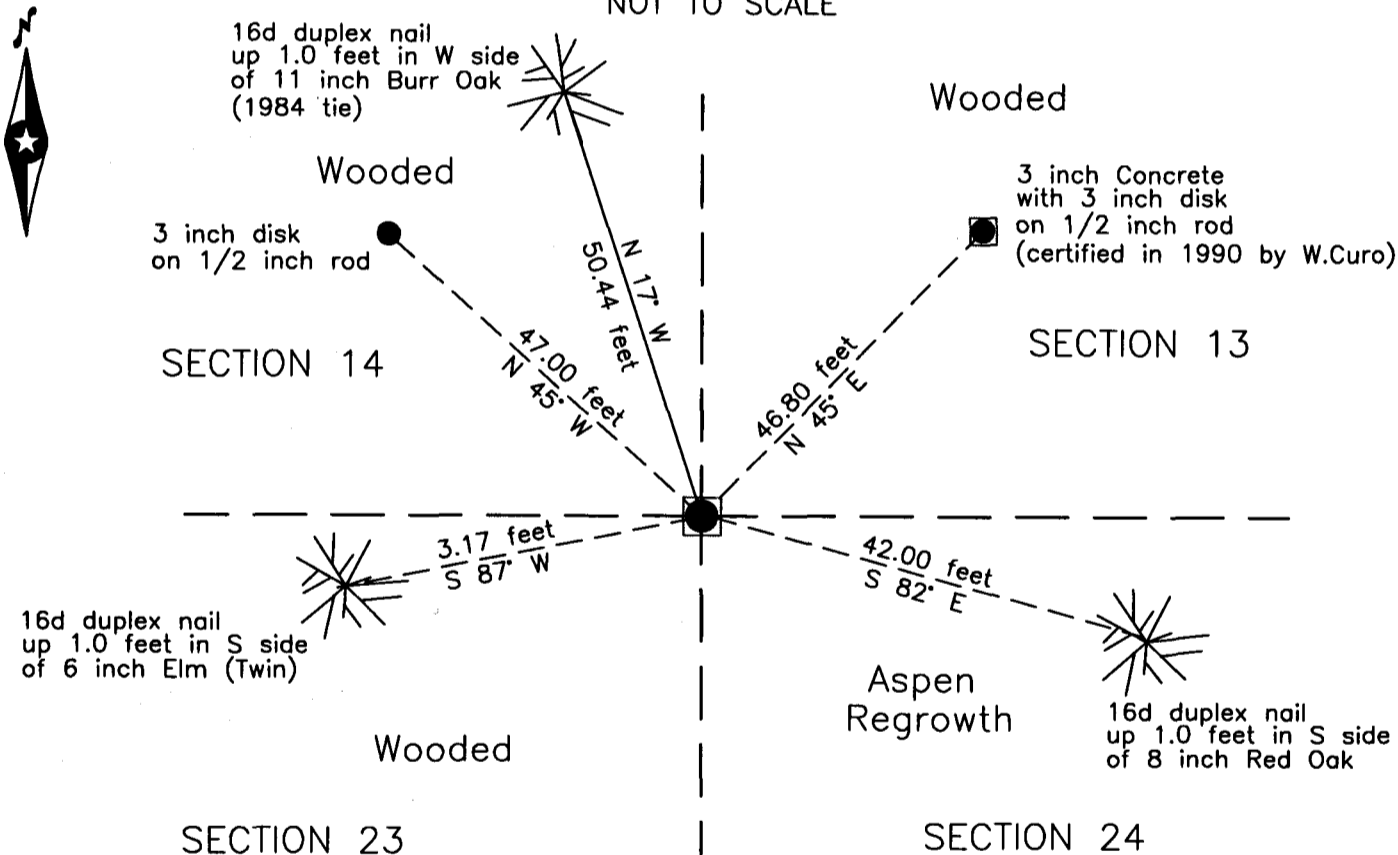
left monument as found lowered monument removed monument (explain)

On _____ placed _____

Wooded

SKETCH OF REFERENCE TIES NOT TO SCALE

Wooded

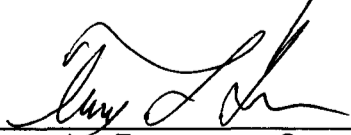


NOTE:

All bearings are true

Statement of evidence relative to this corner location is on the back of this page.

I hereby certify that this survey, plan or report was prepared by me or under my direct supervision and that I am a duly Licensed Land Surveyor under the laws of the State of Minnesota.


Terry L. Freeman, Cass County Surveyor
Date 12/10/14 MN License No. 21367

Page 1 of 2

A000608140



**Index No. N.0-21.0**Statement of Evidence**Northeast corner of Section 23, Township 135 North, Range 30 West, 5th Principal Meridian.**

- Oct. 1869 T.B. Walker, General Land Office (GLO) Deputy Surveyor, in the notes of the subdivision of Township 135 North, Range 30 West, set a post for the original corner and referenced it as follows:
 18" Aspen S 42° W 19 links (12.54 feet) 3" Aspen N 2° E 4 links (2.64 feet)
 22" Aspen N 17° W 42 links (27.72 feet) 14" Aspen S 31° E 45 links (29.70 feet)
 The above record is on file with the Minnesota Historical Society in St. Paul, Minnesota, copies are filed with the Cass County Highway Department, Surveyor's Office (CCHD/SO).
- Oct. 1912 Wm. Hallett, in a Surveyor's Report on a Home Brook Township Petition for County Road, on file at the Cass County Highway Department, indicates a road on true line from the northwest corner of Section 19 to the northeast corner of Section 24.
- July 1922 B. Beach, Deputy Cass County Surveyor, Curo Book 172-A, page 89, on file in the CCHD/SO, states "We set a cement mon. for the cor. to sec. 13-14-23-24 from which we set witness corners as follows:"
 Cem. Mon. N 45° W 46.7 feet Cem. Mon. N 45° E 46.7 feet
- Sept 1987 T. Freeman, technician and D.Marcum, Cass County Land Department Forester, records of the CCHD/SO, found a 3" square cement post with a 3" metal disc on top, up 1.5' which was witnessed as follows:
 6" B. Oak N 72° W 52.03 feet 7" B. Oak N 73° E 7.26 feet
 7" Ash S 54° E 14.09 feet
 W. Curo, LS 11395, County Surveyor filed a Certificate of Location of Government Corner in the Cass County Records Office on this recovery information on January 12, 1990 as Document Number A000317850.
- Aug 2006 B. Hippen, technician, records of the CCHD/SO, recovered the monument and accessories as certified in 1987.

In my analysis of the above monument in relation to recovered adjacent controlling corners the position that was certified in 1990 was made suspect.

- Aug. 2006 B. Hippen, technician, records of the CCHD/SO, returned to the monument certified in 1987 and searched again at a location based on producing the direction and distance of the recovered south half of the east line of Section 23 to the north. A 3 inch square cement post with a 3 inch metal disc on top of a ½ inch rod was recovered near this location. The monument was buried and found bent with the concrete broken. The monument as certified in 1990 was found to be the reference monument northeasterly of this newly recovered location. Another reference monument was also recovered to the northwest. The witnesses for the newly determined position are as follows:
 Reference Mon N 45° E 46.80 feet Reference Mon N 45° W 47.00 feet
 11" Burr Oak (1987) N 17° W 50.44 feet 6" Elm (Twin) S 87° W 3.17 feet
 8" Red Oak S 82° E 42.00 feet
- Dec. 2014 B. Hippen, technician, records of the CCHD/SO, found the monument and witnesses from 2006. The monument, recovered and established references for the position are shown on the face of this document.

Analysis of the recovered record data, field evidence and survey measurements, indicates that the monument recovered in 2006 by CCHD/SO is the accepted location of this corner.

County Coordinates (Cass County South)
 Northing 225452.28
 Easting 513488.35