



A000607940

OFFICE OF THE COUNTY RECORDER
CASS COUNTY, MINNESOTA
CERTIFIED, FILED, AND/OR
RECORDED ON

12/4/2014 1:17:35 PM

AS DOC #: A000607940

PAGES: 2

REC FEES: 0.00

KATHRYN M. NORBY
CASS COUNTY RECORDER

BY SR _____ Dep

Twp 141 Rge 27 Index No. E.0-11.1

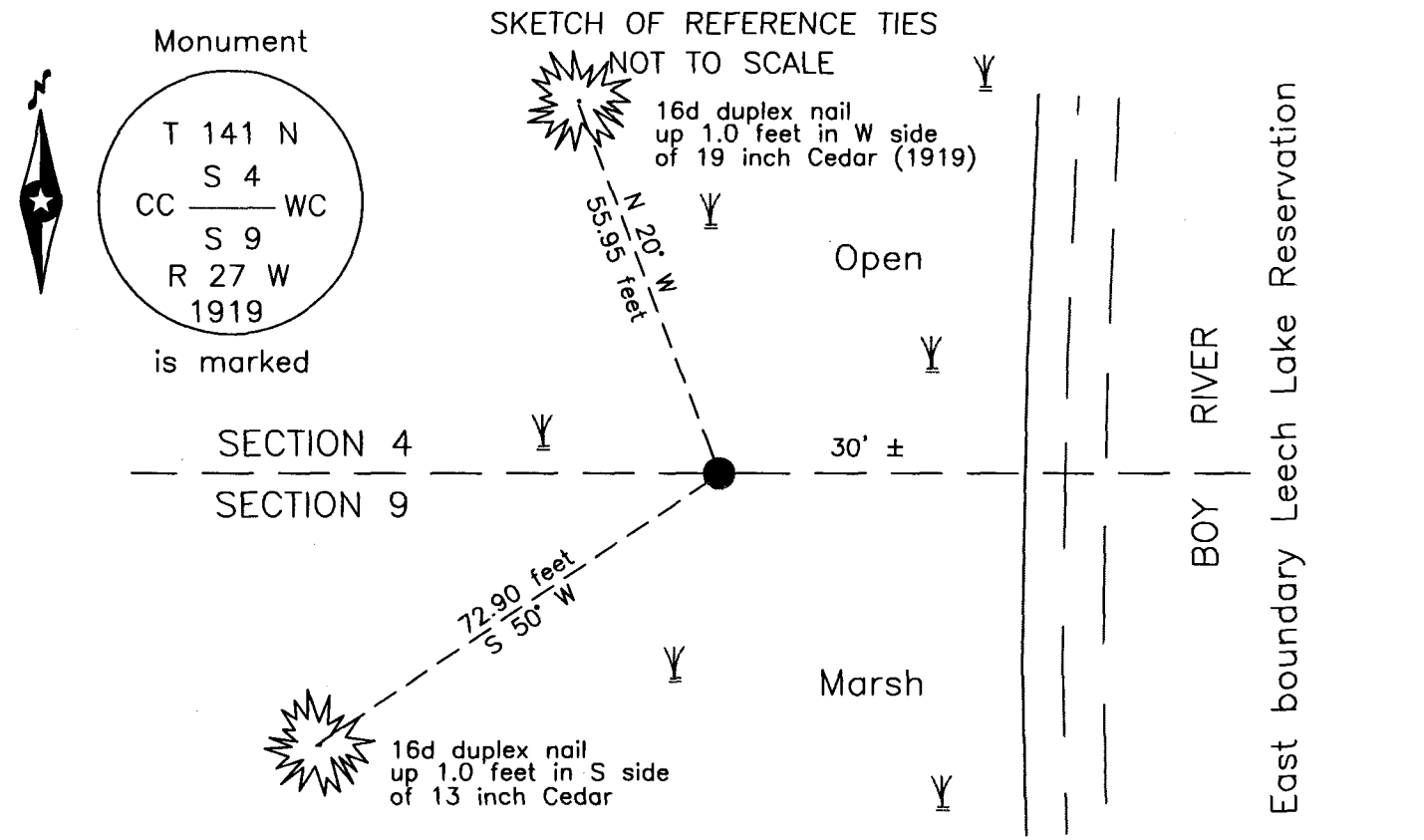
CERTIFICATE OF LOCATION OF GOVERNMENT CORNER

Witness corner to Leech Lake Indian Reservation Boundary Closing Corner on the west bank of Boy River Sections 4 & 9, Township 141 N., Range 27 W., 5th P.M. State of Minnesota, County of Cass

At the corner location shown on the sketch:

On 21 July 2006 found a 1 inch iron pipe with brass cap, lying down, straightened
and pushed into marsh until 0.6 foot is exposed


left monument as found lowered monument removed monument (explain)



NOTE:
All bearings are true

Statement of evidence relative to this corner location is on the back of this page.

I hereby certify that this survey, plan or report was prepared by me or under my direct supervision and that I am a duly Licensed Land Surveyor under the laws of the State of Minnesota.


Terry L. Freeman, Cass County Surveyor
Date 12/3/14 MN License No. 21367



**Index No. E.0-11.1**Statement of Evidence**Witness corner to the east boundary of the Leech Lake Reservation, on the west bank of the Boy River, between Section 4 and 9, Township 141 North, Range 27 West, 5th Principal Meridian.**

June 1919 E.G. Harrington, GLO U.S. Cadastral Engineer, in the notes of the reestablishment of the exteriors and subdivisional lines of this township. States "N 87°49' W on true line bet. Secs. 4 and 9...38.50 To left bank of Boy River, bears N. and S. Set an iron post, 3 ft. long, 1 in. diam., 26 ins. In the ground, for a W. C. C. C. of secs. 4 and 9, with brass cap". The following witnesses were established:
10" Cedar S 55°45' W 103 links (67.98 feet) 6" Cedar N 21°30' W 82 links (54.12 feet)
Said records are on file with the Minnesota Historical Society, St. Paul, Minnesota, copies are filed with the Cass County Highway Department, Surveyor's Office (CCHD/SO).

July 2006 B. Hippen, technician and E. Lindquist, Cass County Land Department Forester, records of the CCHD/SO, found the GLO 1 inch iron pipe with brass cap, lying on its side, straightened and pushed down into marsh, monument is now up 0.6 foot in open marsh, 30 feet, more or less from the edge of open water of the Boy River and witnessed as follows:
19" Cedar (1919) N 20° W 55.95 feet to a 16d duplex nail
13" Cedar S 50° W 72.90 feet to a 16d duplex nail
The monument, recovered and established references for the position are shown on the face of this document.

Analysis of the recovered record data, field evidence and survey measurements, indicates that the monument recovered by CCHD/SO in 2006 is the position established in 1919 by the GLO and is the correct perpetuation of this corner.

County Coordinates (Cass County North)

Northing 190228.79

Easting 527975.42