



A000605474

OFFICE OF THE COUNTY RECORDER
CASS COUNTY, MINNESOTA
CERTIFIED, FILED, AND/OR
RECORDED ON

9/11/2014 11:29:27 AM

AS DOC #: A000605474

PAGES: 2

REC FEES: 0.00

KATHRYN M. NORBY
CASS COUNTY RECORDER

BY SR _____ Dep

Twp 139 Rge 29 Index No. R.0-21.0

CERTIFICATE OF LOCATION OF GOVERNMENT CORNER

Northeast corner of Section 26, Township 139 N., Range 29 W., 5th P.M.
State of Minnesota, County of Cass

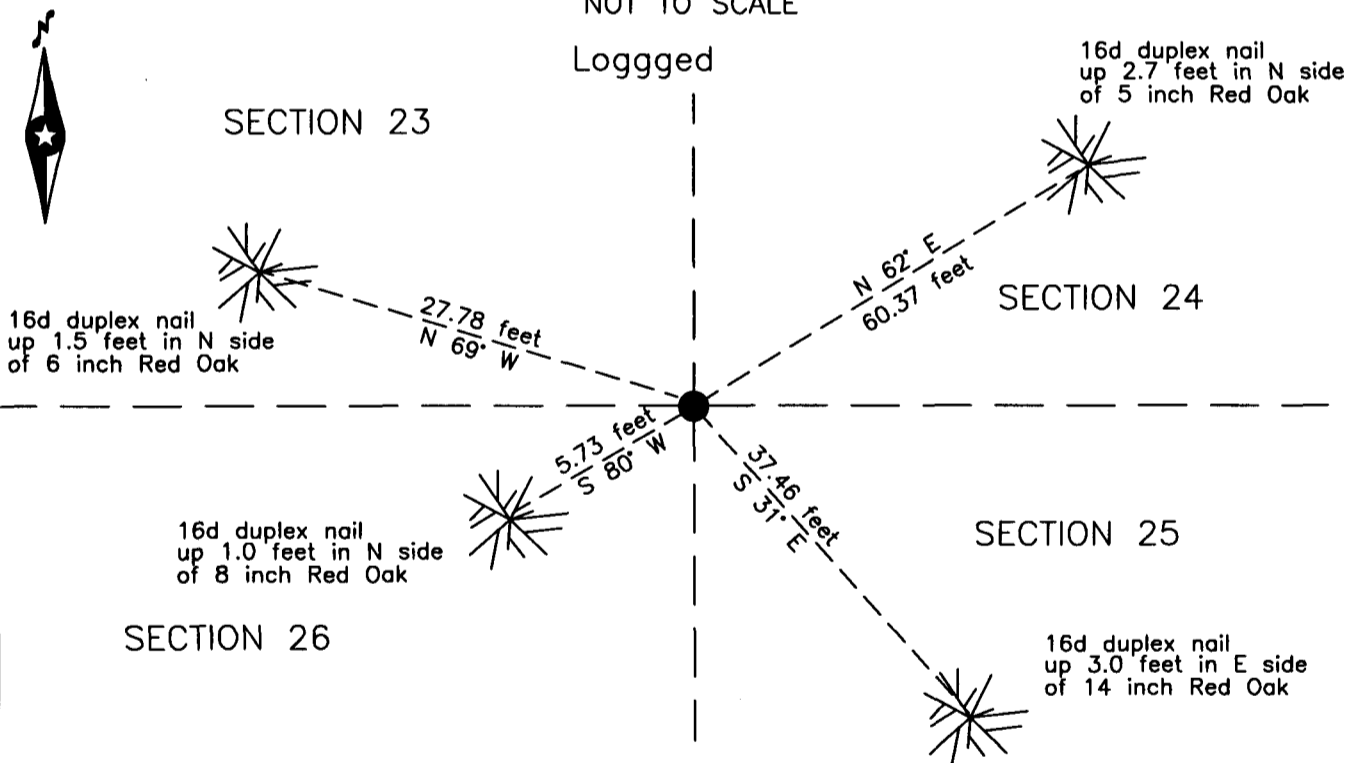
At the corner location shown on the sketch:

On 27 Oct. 2009 found a 2.5 inch galvanized iron pipe, with a plumbers cap,
up 1.7 feet, on South edge of Logging.

left monument as found lowered monument removed monument (explain)

On _____ placed _____


SKETCH OF REFERENCE TIES NOT TO SCALE



NOTE:
All bearings are true

Statement of evidence relative to this corner location is on the back of this page.

I hereby certify that this survey, plan or report was prepared by me or under my direct supervision and that I am a duly Licensed Land Surveyor under the laws of the State of Minnesota.


Terry L. Freeman, Cass County Surveyor
Date 9/10/14 MN License No. 21367





Statement of Evidence

Northeast corner of Section 26, Township 139 North, Range 29 West, 5th Principal Meridian.

- Aug. 1865 Geo. Wright, General Land Office (GLO) Deputy Surveyor, notes for the subdivision of Township 139 North, Range 29 West, set a post for the original corner and referenced it as follows:
 8" N. Pine N 56° E 10 links (6.60 feet) 9" W. Pine N 56 1/2° W 42 links (27.72 feet)
 9" W. Pine S 57° W 42 links (27.72 feet)
 The above record is on file with the Minnesota Historical Society in St. Paul, Minnesota, copies are filed with the Cass County Highway Department, Surveyor's Office (CCHD/SO).

- Nov. 1911 J.W. Curo, LS 1428, Cass County Surveyor, Survey Record No. 168, County Book A, page 379, on file in the CCHD/SO, states "the corner of Sections 23, 24, 25, 26 139-29 where they find the stump of the NE old government bearing tree and the tree of the old NW bearing tree plainly marked from which they set a 2 x 48 inch galvanized iron monument for the true corner.

- Nov. 1917 Final Road Order of Town Board, file in the CCHD/SO, indicates a road on the line between sections 23-26 which begins at the northeast corner of section 25.

- Nov. 1918 H.J. Curo, LS 3417, Curo Book 202, pages 6, 8 and 11, on file in the CCHS/SO, indicates I.M. at the subject corner.

- June 1920 E.B. Horst, LS 376, Cass County Deputy Surveyor, Survey Record No. 436, County Book C, page 349, on file in the CCHD/SO, pictorial indicates an Iron Monument at the subject corner.

- Jan. 2008 C.J. Hendershott, LS 45353, notes on file in the Northern Engineering & Consulting, (formerly Landecker & Assoc.) Walker Office, found a 2.5 inch iron pipe with a 3 inch plumbers cap and witnessed as follows:
 8" Oak N 69° W 27.78 feet 6" Oak N 62° E 60.37 feet
 15" Oak S 31° W 37.46 feet 10" Oak S 80° W 5.73 feet

- Oct. 2009 B.Hippen, technician, records of the CCHD/SO, found a 2 3/8 inch outside diameter iron pipe, with a plumber cap, up 1.7 feet, at South side of recent logging and the 2008 witnesses in good condition.

The monument, recovered and established references for the position are shown on the face of this document.

Analysis of the recovered record data, field evidence and survey measurements, indicates that the monument recovered by the CCHD/SO is the correct perpetuation of this corner.

County Coordinates (Cass County North)

Northing 111151.54

Easting 479097.76