

CERTIFICATE OF LOCATION OF GOVERNMENT CORNER

NE Corner of Section 24, Township 138N, Range 32W, 5th p.m., State of Minnesota, County of Cass

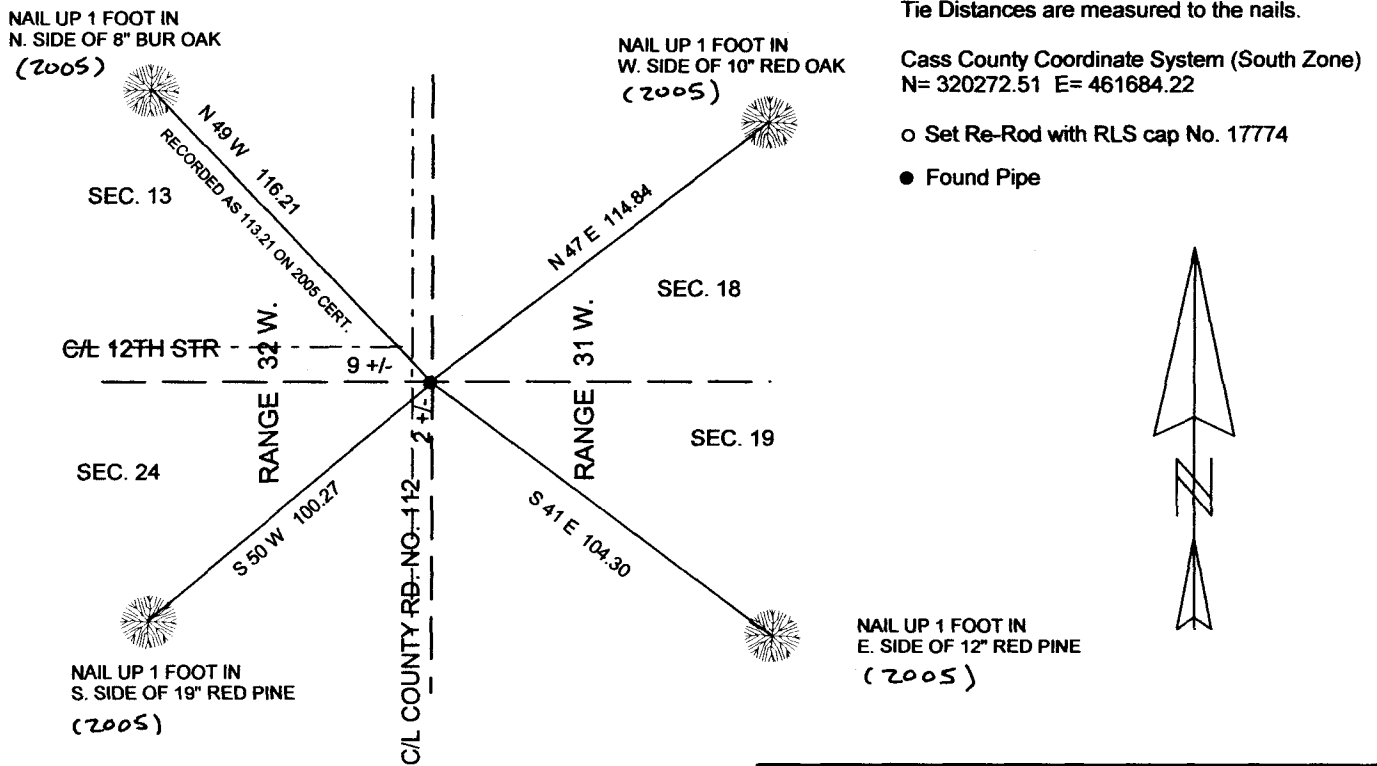
At the corner location shown on the sketch:

On 5 NOV. 2012 found a 2" DIA. IRON PIPE
Date

left monument as found lowered monument removed monument (explain)

On _____ placed a _____
Date

SKETCH OF REFERENCE TIES



NOT TO SCALE

Statement of evidence relative to this corner location is on back of page.

I hereby certify that this document and the data contained herein was prepared by me or under my direct supervision.

Marvin R. Kohout 12 August 2014
Marvin R. Kohout Date

License No. 17774

Land surveyor

OFFICE OF COUNTY RECORDER



A000604898

OFFICE OF THE COUNTY RECORDER
CASS COUNTY, MINNESOTA
CERTIFIED, FILED, AND/OR
RECORDED ON

8/20/2014 11:22:43 AM

AS DOC #: A000604898

PAGES: 2

REC FEES: 0.00

KATHRYN M. NORBY
CASS COUNTY RECORDER

BY SR _____ Dep

Page 1 of 2 A000604898



INDEX NO. N.0 – 25.0

STATEMENT OF EVIDENCE

NORTHEAST CORNER SECTION 24, TOWNSHIP 138N, RANGE 32W, 5TH P.M.

1860 J.W. MYERS GENERAL LAND OFFICE (GLO) DEPUTY SURVEYOR SET A POST AND MARKED B.T.'S. REFERENCES ARE:

8" BIRCH	6" BIRCH	8" BIRCH	4" BIRCH
N 52 E	S 80 W	N 30 W	S 53 E
10 LKS	20 LKS	25 LKS	31 LKS

1917 E. B. HORST, LS 376, DEPUTY CASS CO. SURVEYOR, SET AN IRON MONUMENT WITH REFERENCES:

6" JACK PINE	6" JACK PINE	5" JACK PINE
N 49-30 E	S 76-30 W	N 49-30 W
35.5 FT.	89.8 FT.	42.0 FT.

SURVEY RECORD NO.385, BOOK C, PG. 63

2005 B. HIPPEN, TECHNICIAN, CCSO, FOUND A 2" PIPE, DOWN 1 FOOT WITH THE TOP .8 FT. BROKEN OFF AND LYING HORIZONTAL. MADE REFERENCES SHOWN ON PAGE 1. NOTES ON FILE IN CASS CO. SURVEYOR'S OFFICE.

2012 MARVIN KOHOUT, LS NO. 17774, AND DOUG STILLE, TECHNICIAN, OF KOHOUT LAND SURVEYING, ACCEPTS THE PIPE FOUND BY HIPPEN IN 2005 AS MARKING THE LOCATION OF THE NE CORNER OF SECTION 24.