

CERTIFICATE OF LOCATION OF GOVERNMENT CORNER

MC #39 Corner of Section 18, Township 140N, Range 31W, 5th p.m., State of Minnesota, County of Cass

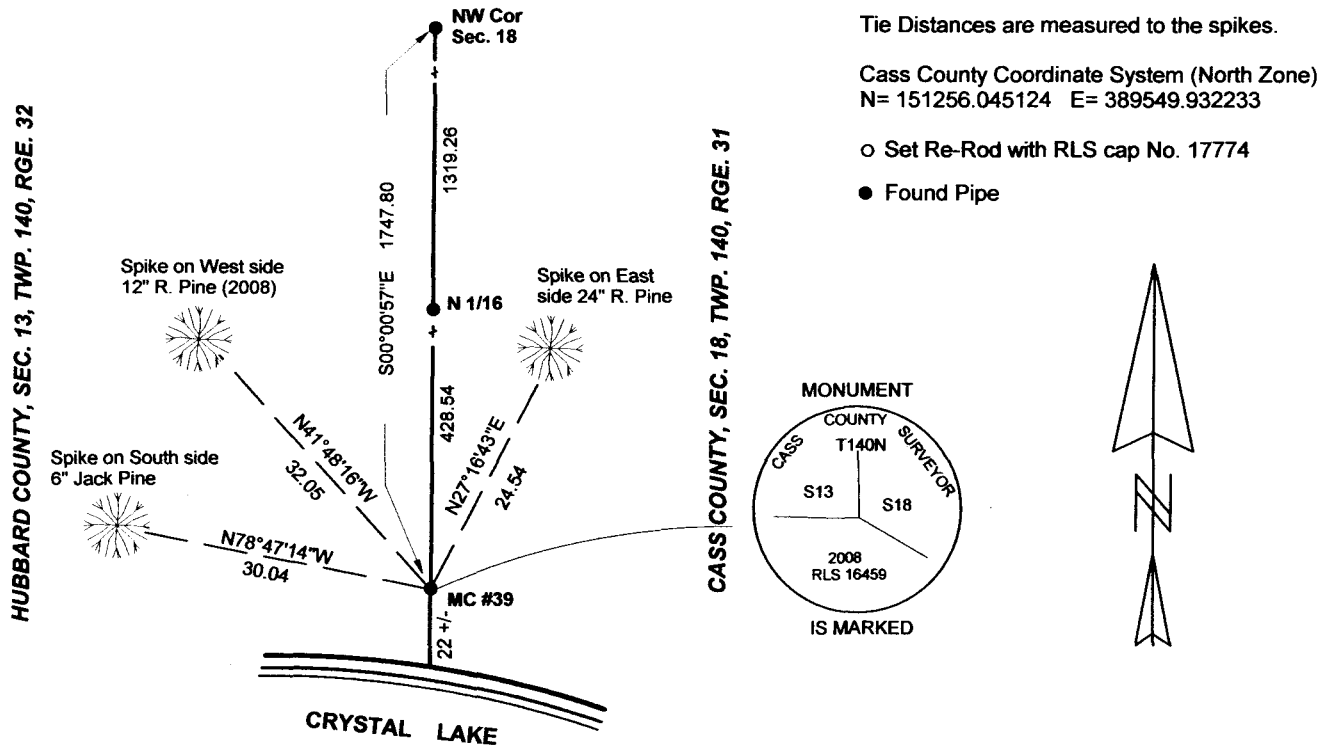
At the corner location shown on the sketch:

On 01/24/2013 found a STAMPED ALUMINUM CAP, DOWN 0.1, 22' +/- NORTH OF CRYSTAL LAKE
Date

left monument as found lowered monument removed monument (explain)

On _____ placed a _____
Date

SKETCH OF REFERENCE TIES



OFFICE OF COUNTY RECORDER



A000604372

**OFFICE OF THE COUNTY RECORDER
CASS COUNTY, MINNESOTA
CERTIFIED, FILED, AND/OR
RECORDED ON**

7/31/2014 10:41:37 AM

AS DOC #: A000604372

PAGES: 2

REC FEES: 0.00

**KATHRYN M. NORBY
CASS COUNTY RECORDER**

BY SR Dep

NOT TO SCALE

Statement of evidence relative to this corner location is on back of page.

I hereby certify that this document and the data contained herein was prepared by me or under my direct supervision.

Marvin R. Kohout 7 June 2013
Marvin R. Kohout Date

Registration No. 17774

Land surveyor



INDEX NO. K.3 - 1.0

STATEMENT OF EVIDENCE

MEANDER CORNER NO. 39, NORTH SHORE CRYSTAL LAKE, SECTION 18, TOWNSHIP 140N, RANGE 31W, 5TH P.M.

- 1860 J.W. MEYERS, GENERAL LAND OFFICE (GLO) DEPUTY SURVEYOR, IN ESTABLISHING THE 4TH GUIDE MERIDIAN BETWEEN RANGES 31 AND 32 WEST SET A POST FOR THE ORIGINAL CORNER AND REFERENCED AS FOLLOWS:
6" SPRUCE N 55 W 25 LINKS 6" SPRUCE N 45 E 32 LINKS
- 1870 T.B. WALKER, GENERAL LAND OFFICE DEPUTY SURVEYOR, CLOSED ON THIS CORNER IN THE NOTES OF THE MEANDER ON LAKE LYING IN SECTION 18 IN SUBDIVISION OF THIS TOWNSHIP.
- 1948 J. W. CURO, LS NO. 1428, STATES "1454 MC SETS EAST 8.2 FENCE POST SETS EAST 8.2 FT", CURO BOOK 255, PAGE 42, MICRO FILM ROLL 15, A CERTIFICATE OF SURVEY, ON FILE IN THE CCSO, INDICATES "TRUE MC" 1752 FEET SOUTHERLY OF "TRUE SEC. COR" MARKED BY AN IRON PIPE.
- 1949 H. J. CURO, LS NO. 3417, STATES "I.M. SET BY J.W.C. FOR MC 39 NORTH SIDE CRYSTAL LAKE ON COUNTY LINE CHAIN SOUTH OVER ICE, FROM I.M. NOTE STAKE 1454 SOUTH OF SEC. COR. SETS ABOUT 1 FOOT SOUTH AND 7.8 FEET WEST OF I.M. - 1.5 FT EAST OF FENCE, FENCE CHANGED SINCE SURVEY" CURO BOOK 18A, PAGE 6, MICROFILM ROLL 19, ON FILE IN THE CCSO.
- 1967 R.F. SCHNEIDER, LS 5740, NOTES OF SURVEY IN SEC. 13, TWP 140, RGE 32, FOR FLORENCE BANNISTER, ON FILE IN THE LANDECKER AND ASSOCIATES INC. WALKER OFFICE, STATES "MC NORTH SHORE CRYSTAL LAKE EAST LINE SEC. 13 2" IRON PIPE INPLACE" AND LISTS FOLLOWING TIES:
5" JACK PINE N 58-25 E 11.68' 12" JACK PINE N 06-40 E 28.98'
- 2008 B. HIPPEN, CCSO TECHNICIAN, RECORDS OF THE CCSO, FOUND A 1 1/8" OUTSIDE DIAMETER PINCH TOP, UP 0.2', AT THE R.F. SCHNEIDER 1967 NORTH 1/16 CORNER, NO EVIDENCE OF THE MEANDER CORNER WAS RECOVERED.
- 2008 B. HIPPEN, CCSO TECHNICIAN, RECORDS OF THE CCSO, SET A 1" OUTSIDE DIAMETER ALUMINUM TUBE WITH ALUMINUM CAP, DOWN 0.1', AT THE ADJUSTED 1967 R.F. SCHNEIDER DISTANCE FROM THE RECOVERED NORTH 1/16 CORNER ON THE LINE EXTENDED THROUGH SAID 1/16TH CORNER FROM THE NORTHWEST CORNER OF SECTION 18. THE MONUMENT FALLS 22', MORE OR LESS, NORTH OF CRYSTAL LAKE AND IS WITNESSED AS FOLLOWS:
12" N. PINE N 38 W 32.05' 18" N. PINE N 30 E 24.59'
STEEL FE POST NORTH 3.6'
- 2012 MARVIN KOHOUT, LS NO. 17774, AND DOUG STILLE TECHNICIAN KOHOUT LAND SURVEYING FOUND R.F. SCHNEIDER'S 1 1/8" PINCH TOP AND MC 39, AS SET BY B. HIPPEN IN 2008. TIES ARE AS FOLLOWS:
6" JACK PINE N78-47-14W 30.04' 12" R. PINE N41-48-16W 32.06'
24" R. PINE N27-16-43E 24.54' STEEL FE POST NORTH 3.6'