



A000604189

OFFICE OF THE COUNTY RECORDER  
CASS COUNTY, MINNESOTA  
CERTIFIED, FILED, AND/OR  
RECORDED ON

7/24/2014 10:42:43 AM

AS DOC #: A000604189

PAGES: 2

REC FEES: 0.00

KATHRYN M. NORBY  
CASS COUNTY RECORDER

BY SR Dep

Page 1 of 2 A000604189

Twp 137 Rge 31 Index No. A.0-05.0

### CERTIFICATE OF LOCATION OF GOVERNMENT CORNER

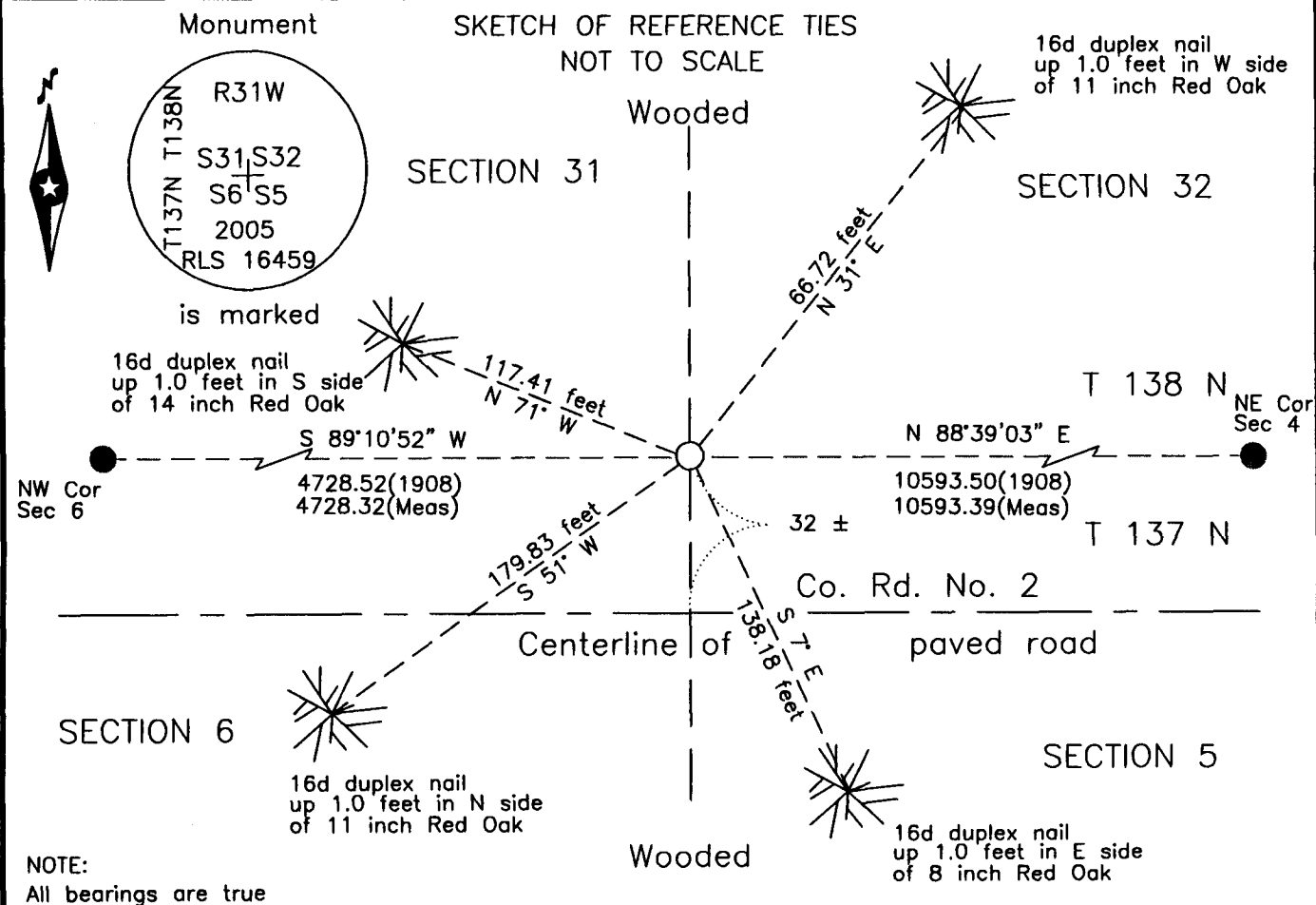
Northeast corner of Section 6, Township 137 N., Range 31 W., 5th P.M.  
State of Minnesota, County of Cass

At the corner location shown on the sketch:

On \_\_\_\_\_ found \_\_\_\_\_

left monument as found     lowered monument     removed monument (explain)

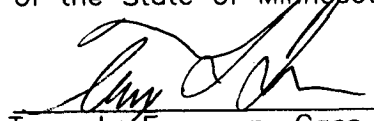
On 8 Aug 2005 placed \_\_\_\_\_ a 1 inch diameter by 30 inch Aluminum tube  
with a stamped aluminum cap, flush, in shoulder



NOTE:  
All bearings are true

Statement of evidence relative to this corner location is on the back of this page.

I hereby certify that this survey, plan or report was prepared by me or under my direct supervision and that I am a duly Licensed Land Surveyor under the laws of the State of Minnesota.



Terry L. Freeman, Cass County Surveyor  
Date 7/23/14 MN License No. 21367

**Index No. A.0-05.0**Statement of Evidence**Northeast corner of Section 6, Township 137 North, Range 31 West, 5th Principal Meridian.**

- Aug. 1865 G.B.Wright, General Land Office (GLO) Deputy Surveyor, notes for the North line of Township 137 North, Range 31 West, set a post for the original corner and referenced it as follows:  
 12" Birch N 62°15' E 32 links(21.1 feet) 4" W. Pine N 37° W 7 links( 4.6 feet)  
 4" Bl. Oak S 68°30' W 29 links(19.1 feet) 5" Aspen S 67°E 22 links(14.5 feet)  
 The above record is on file with the Minnesota Historical Society in St. Paul, Minnesota, copies are filed with the Cass County Highway Department, Surveyor's Office (CCHD/SO).
- Sept. 1908 J.W. Curo, Cass County Surveyor, LS 1428, Survey Record No. 158, Book A, page 331 and Curo Book 49, page 138, also Curo Book 85, pages 186-187, all on file in the CCHD/SO, states "We establish the true corner from one White Pine stump which stands plainly marked NW, at 8°45' variation, after which the roots of other old bearing trees stand perfect for course and distance. We find the old stake at the point we drive a new one and set new bearing trees as follows:"  
 12" Birch S 42°16' W 42.20 feet 8" R. Oak N 41°04' W 41.15 feet
- Sept. 1908 J.W. Curo, Cass County Surveyor, LS 1428, Survey of FAWN LAKE COUNTY ROAD, Road Calendar A, page 49 and Road Calendar B, page 46, shows road survey at subject corner.
- July 1911 E.L. Forbes and A.W. Moulster, Survey Record No. 158, Book A, page 337, on file in the CCHD/SO, states "set an iron 2 x 48 inches in size with no cement, at the corner previously established".
- Oct. 1914 C.D. Conzett, LS 428, Ditch Shelf 4, Book 4, page 36, on file in the CCHD/SO, Survey of State Road #2 indicates Sec Cor (Concrete) at station 237+38.
- 1957 Cass County Highway Department, (CCHD), notes on file in the CCHD, as SP 11-606-01, indicates 2" I.P. 32' LT (North) at Station 153+46. The pictorial shows the following references:  
 4" Oak NE 30.0 feet 8" Birch NNW 24.7 feet  
 5" Pop. NW 44.7 feet
- 1983 T. Freeman, technician, CCHD/SO, Land Corner Record on file in the CCHD/SO, states could not find iron.
- Aug. 2002 B. Hippen and T. Anderson, technicians, records of the CCHD/SO, state 1957 CCHD position falls in back of road ditch in excavation for new construction, no reason to dig for evidence.
- Aug. 2005 B. Hippen, technician, records of the CCHD/SO, set an Aluminum County Monument at a position determined proportionally from the recovered Northwest corner of Section 6, the recovered Northeast corner of Section 4 and the pre-1957 centerline of County Road Number 2.
- July. 2014 B. Hippen, technician, records of the CCHD/SO, found the monument and witnesses from 2005. The monument, recovered and established references for the position are shown on the face of this document.

**Analysis of the recovered record data, field evidence and survey measurements, indicates that the monument established by CCHD/SO is a perpetuation of the 1957 recovery and is the accepted location of this corner.**

**County Coordinates (Cass County South)**

**Northing 304474.63**

**Easting 456240.72**