

# CERTIFICATE OF LOCATION OF GOVERNMENT CORNER

E1/4 Corner of Section 25, Township 138N, Range 32W, 5th p.m., State of Minnesota, County of Cass

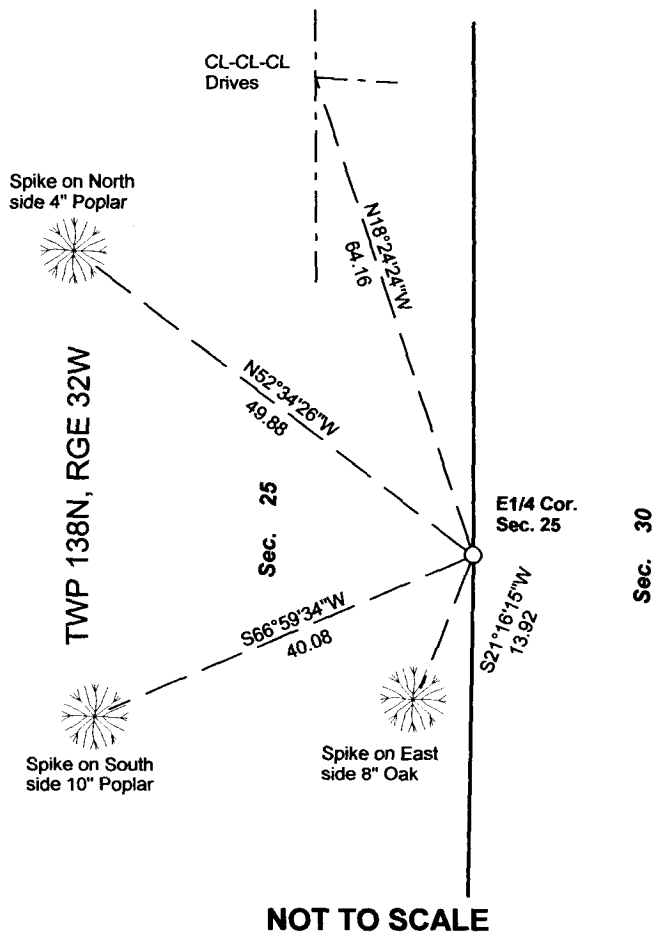
At the corner location shown on the sketch:

On \_\_\_\_\_ found a \_\_\_\_\_  
Date \_\_\_\_\_

\_\_\_\_\_ left monument as found \_\_\_\_\_ lowered monument \_\_\_\_\_ removed monument (explain)

On 12/06/2012 placed a 3/8" REROD WITH RLS CAP NO. 17774  
Date \_\_\_\_\_

## SKETCH OF REFERENCE TIES



Tie Distances are measured to the spikes.

Cass County Coordinate System (South Zone)  
N= 312351.5121 E= 451517.4474

- Set Re-Rod with RLS cap No. 17774
- Found Pipe



TWP 138N, RGE 31W

NOT TO SCALE

Statement of evidence relative to this corner location is on back of page.

I hereby certify that this document and the data contained herein was prepared by me or under my direct supervision.

*Marvin R. Kohout* 20 Dec 2012  
Marvin R. Kohout Date

Registration No. 17774

Land surveyor

OFFICE OF COUNTY RECORDER



A000603807

OFFICE OF THE COUNTY RECORDER  
CASS COUNTY, MINNESOTA  
CERTIFIED, FILED, AND/OR  
RECORDED ON

7/10/2014 11:20:38 AM

AS DOC #: A000603807

PAGES: 2

REC FEES: 0.00

KATHRYN M. NORBY  
CASS COUNTY RECORDER  
BY SR \_\_\_\_\_ Dep

Page 1 of 2 A000603807



INDEX NO. T.0 - 25.00

STATEMENT OF EVIDENCE

EAST QUARTER CORNER SECTION 25, TOWNSHIP 138N, RANGE 32W, 5<sup>TH</sup> P.M.

1860 DEPUTY SURVEYOR JACOB W. MYERS IN THE ORIGINAL GOVERNMENT SURVEY SET A POST AND MARKED B.T.'S. REFERENCES ARE:  
6" ASPEN  
S43W  
200 LKS

2012 MARVIN KOHOUT, LS NO. 17774, AND DOUG STILLE, TECHNICIAN, OF KOHOUT LAND SURVEYING SEARCHED FOR CORNER, NOTHING FOUND. SET 3/8" REROD WITH RLS CAP NO.17774, MIDWAY AND ON LINE BETWEEN THE NE CORNER OF SECTION 25 AND THE NE CORNER OF SECTION 36.