



A000602564

OFFICE OF THE COUNTY RECORDER
CASS COUNTY, MINNESOTA
CERTIFIED, FILED, AND/OR
RECORDED ON

5/22/2014 10:49:42 AM

AS DOC #: A000602564

PAGES: 2

REC FEES: 0.00

KATHRYN M. NORBY
CASS COUNTY RECORDER

BY SR Dep

Twp 135 Rge 29 Index No. A.0-09.0

CERTIFICATE OF LOCATION OF GOVERNMENT CORNER

Northeast of Section 5, Township 135 N., Range 29 W., 5th P.M.
State of Minnesota, County of Cass

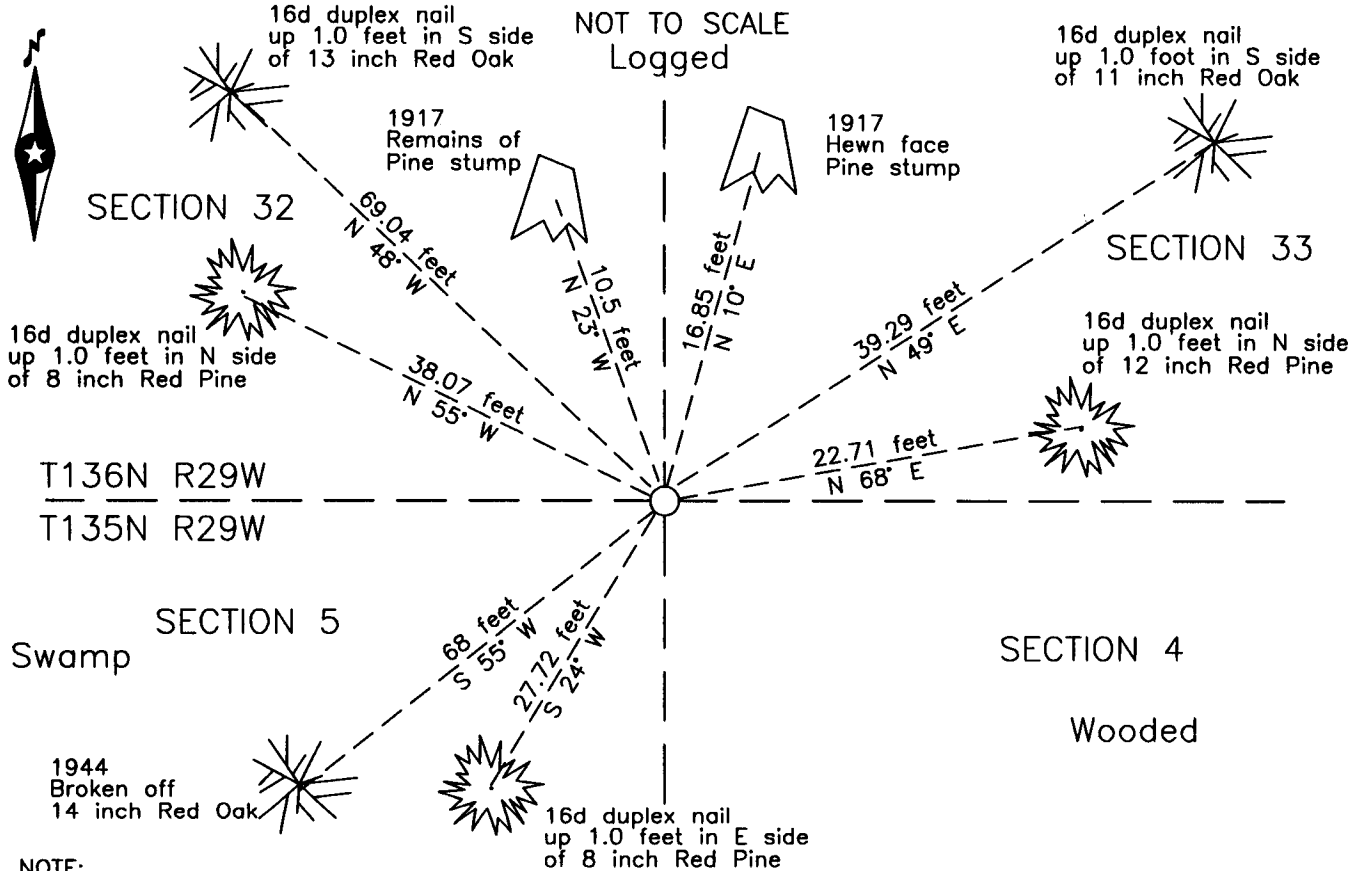
At the corner location shown on the sketch:

On 10 Jan 2007 found a 1 1/2 inch ODIP, up 0.8 foot, Northeast of swamp

left monument as found lowered monument removed monument (explain)

On _____ placed _____

SKETCH OF REFERENCE TIES



NOTE:
All bearings are true

Statement of evidence relative to this corner location is on the back of this page.

I hereby certify that this survey, plan or report was prepared by me or under my direct supervision and that I am a duly Licensed Land Surveyor under the laws of the State of Minnesota.

Terry L. Freeman, Cass County Surveyor
Date 5/21/14 MN License No. 21367





Statement of Evidence

Northeast corner of Section 5, Township 135 North, Range 29 West, 5th Principal Meridian.

- June 1858 E.N. Darling, General Land Office (GLO) Deputy Surveyor, in the notes of the survey of the north line of Township 135 North, Range 29 West, set a post for the original corner in his survey and referenced it as follows:

14" Pine	S 63°W 46 links (30.4 feet)	12" Pine	S 12°E 12 links (7.9 feet)
10" Pine	N 30°W 96 links (63.4 feet)	24" Pine	N 75°E 70 links (46.2 feet)

- June 1865 G.B. Wright, GLO Deputy Surveyor found a post for the corner in his subdivision of Township 135 North, Range 29 West, 64 links (42.24 feet) East of his intersection with the north line.
 The above record is on file with the Minnesota Historical Society in St. Paul, Minnesota, copies are filed with the Cass County Highway Department, Surveyor's Office (CCHD/SO).

- May 1917 J.W. Curo, LS 1428, Curo Book 56, page 110, on file in the CCHD/SO, found stumps of the NW, SW and NE BT's and "set a 3 x 3 x 14 inch oak hub and tack for the live corner", he lists references as follows:

15" N. Pine	N 22°45'W	9.98 feet	14" Dry N. Pine(stub)	N 29°30'E	3.83 feet
17" N. Pine	N 9°20'E	16.82 feet			

- Aug. 1928 J.W. Curo, LS 1428, Curo Book 216, page 125, on file in the CCHD/SO, states "We find my old 3 x 36 inch oak stake & tack set by me in Lundene survey", he lists the 1917 witnesses and add a new reference as follows:

15" N. Pine	N 81°50' W	39.20 feet			
-------------	------------	------------	--	--	--

- Aug. 1942 J.W. Curo, LS 1428, Curo Book 240, pages 121 and 139, on file in the CCHD/SO, indicates the subject corner and line cut from corner to County road.

- June 1944 J.W. Curo, LS 1428, Cass County Surveyor, Curo Book 236, page 142, on file in the CCHD/SO, states "Set 1 1/2 x 3 ft. 7 inch pipe the remains of old stake only a shell of the top left set May 11-1917." He lists new reference as follows:

7" Oak	N 48°38' E	39.0 feet	10" Crooked Oak	S 55°18' W	68.0 feet
8" Oak	N 48° W	68.4 feet	14" Oak	S 68°50' E	59.65 feet

- April 1982 Landecker and Associates, Inc., sketch of field notes and calculations, on file in the Pequot Lakes office indicates a calculated corner position and a search for 1917 ties.

- Jan. 2007 B. Hippen, technician, CCHD/SO, notes of the CCHD/SO, found a 1.5 inch outside diameter iron pipe, up 0.8 foot, at bearing and distance from the remains of the 1917 witnesses and added the following new references:

8" Red Pine	N 55° W	39.07 feet	12" Red Pine	N 68° E	22.71 feet
8" Red Pine	S 24° W	27.72 feet			

The recovered and established references for the position are shown on the face of this document.

Analysis of the recovered record data, field evidence and survey measurements, indicates that the monument recovered by CCHD/SO is the correct perpetuation of this corner.

County Coordinates (Cass County South)

Northing 241385.63

Easting 529134.81