



A00602562

OFFICE OF THE COUNTY RECORDER  
CASS COUNTY, MINNESOTA  
CERTIFIED, FILED, AND/OR  
RECORDED ON

5/22/2014 10:49:40 AM

AS DOC #: A00602562

PAGES: 2

REC FEES: 0.00

KATHRYN M. NORBY  
CASS COUNTY RECORDER

BY SR Dep

Twp 135 Rge 29 Index No. J.0-07.0

### CERTIFICATE OF LOCATION OF GOVERNMENT CORNER

North Quarter corner of Section 17, Township 135 N., Range 29 W., 5th P.M.  
State of Minnesota, County of Cass

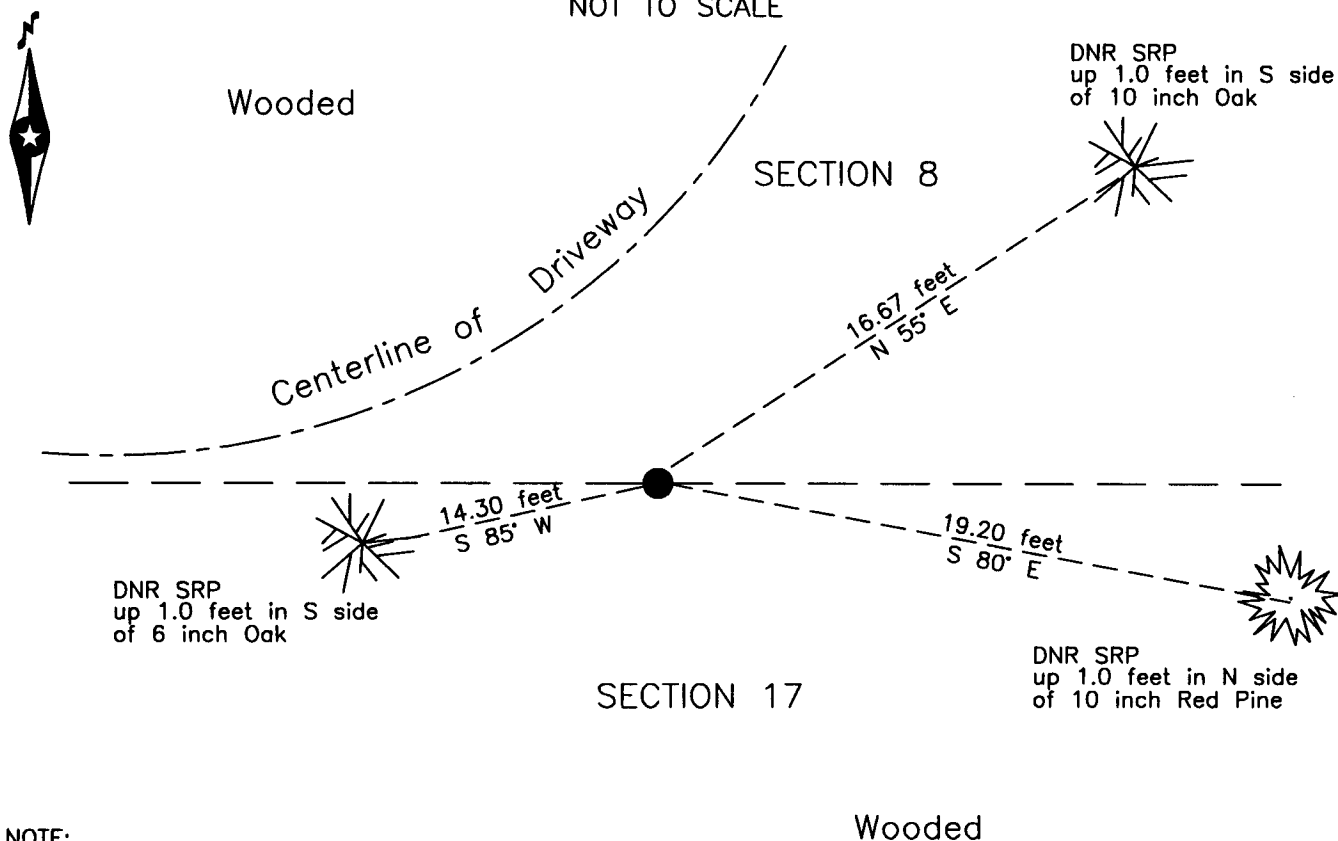
At the corner location shown on the sketch:

On 19 Sept. 2007 found a 1.5 inch outside diameter iron pipe, up 2.4 feet.

left monument as found     lowered monument     removed monument (explain)

On \_\_\_\_\_ placed \_\_\_\_\_

SKETCH OF REFERENCE TIES  
NOT TO SCALE



NOTE:  
All bearings are true

Statement of evidence relative to this corner location is on the back of this page.

I hereby certify that this survey, plan or report was prepared by me or under my direct supervision and that I am a duly Licensed Land Surveyor under the laws of the State of Minnesota.

Terry L. Freeman, Cass County Surveyor  
Date 5/21/14 MN License No. 21367





Statement of Evidence

North Quarter corner of Section 17, Township 135 North, Range 29 West, 5th Principal Meridian.

June 1865 G.B. Wright, GLO Deputy Surveyor in the notes of the subdivision of Township 135 North, Range 29 West, set a post for the original corner and referenced it as follows:  
20" Dead N Pine N 26° E 88 links(58.08 feet) 20" Dead N Pine S 39 1/4° E 33 links(21.78 feet)  
The above record is on file with the Minnesota Historical Society in St. Paul, Minnesota, copies are filed with the Cass County Highway Department, Surveyor's Office (CCHD/SO).

1976 D. Anderson, LS 3091, Cass County Land Corner Record, on file in the CCHD/SO, indicates a 1.1/2" iron pipe and lists the following new witnesses:  
4" Oak NE 16.25 feet 9" Aspen NW 2.7 feet  
14" J. Pine SE 27.8 feet

1982 T. Freeman, technician and D. Marcum, forester, Cass County Land Corner Record, on file in the CCHD/SO, indicates a found 1 1/2" I.P. up 2 1/2 feet, a rotten stump, possibly SE GLO BT and 1976 witnesses.

Nov. 1986 D. Landecker, LS 17008, Certificate of Survey, file 8545-1, on file in the Pequot Lakes office and a copy on file in CCHD/SO, indicates a monument found.

May 2003 P.J. Axness, Minnesota Department of Natural Resources(DNR), file FMA00508.00.00.01, survey indicates a found 1 1/4" I.P., up 2.5 feet in woods and list references as follows:  
10" Oak N 55° E 16.67 feet 6" Oak S 85° W 14.30 feet  
10" N Pine S 80° E 19.20 feet

Sept. 2007 B. Hippen, technician, records of the CCHD/SO, found a 1.5 inch outside diameter iron pipe, up 2.4 feet, near P.I. of driveway and 2003 DNR witnesses in good condition.

May 2014 B. Hippen, technician, records of the CCHD/SO, found monument and witnesses from 2003. The recovered and established references for the position are shown on the face of this document.

**Analysis of the recovered record data, field evidence and survey measurements, indicates that the monument recovered by the DNR in 2003 is the accepted location of this corner.**

County Coordinates (Cass County South)

Northing 230601.65  
Easting 526404.87