



A000602364

OFFICE OF THE COUNTY RECORDER
CASS COUNTY, MINNESOTA
CERTIFIED, FILED, AND/OR
RECORDED ON

5/15/2014 11:32:43 AM

AS DOC #: A000602364

PAGES: 2

REC FEES: 0.00

KATHRYN M. NORBY
CASS COUNTY RECORDER

BY SR _____ Dep

Page 1 of 2
A000602364

Twp 140 Rge 28 Index No. R.0-13.0

CERTIFICATE OF LOCATION OF GOVERNMENT CORNER

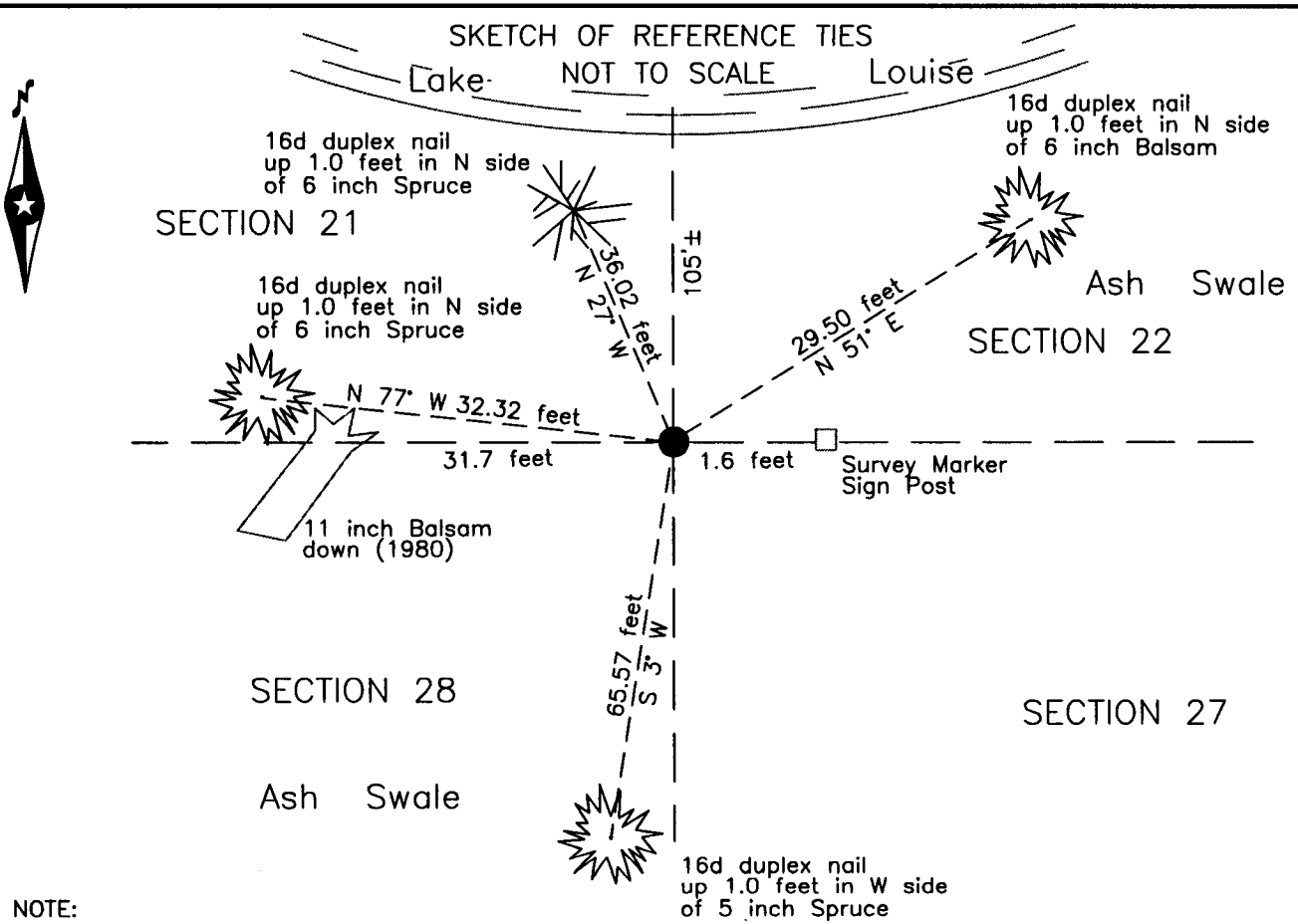
Northeast Corner of Section 28, Township 140 N., Range 28 W., 5th P.M.
State of Minnesota, County of Cass

At the corner location shown on the sketch:

On 13 Jan. 2011 found a 2.25 inch outside diameter iron pipe, up 1.0 foot,
105 feet± south of open water of Lake Louise.

left monument as found lowered monument removed monument (explain)

On _____ placed _____



NOTE:
All bearings are true

Statement of evidence relative to this corner location is on the back of this page.

I hereby certify that this survey, plan or report was prepared by me or under my direct supervision and that I am a duly Licensed Land Surveyor under the laws of the State of Minnesota.

Terry L. Freeman, Cass County Surveyor
Date 5/14/14 MN License No. 21367



Statement of Evidence

Northeast corner of Section 28, Township 140 North, Range 28 West, 5th Principal Meridian.

Jan. 1870 O. Smith, General Land Office (GLO) Deputy Surveyor, notes for the subdivision of Township 140 North, Range 28 West, set a post for the original corner and referenced it as follows:

16" Tam	N 60° E	48 links (31.68 feet)	8" Tam	S 25° E	43 links (28.38 feet)
19" Tam	S 80° W	22 links (14.52 feet)	20" W. Pine	N 39° W	43 links (28.38 feet)

July 1913 L.L. Clement, GLO, U. S. Surveyor, Survey of Island in Hunter Lake, found remains of the original witness trees and states "At his point I set a Tamarack post, 4 ins. square, 6 ft. long, 3 ft. in the ground, for the cor." and referenced it as follows:

8" Spruce	N 24° E	35 1/2 links (23.43 feet)	6" Spruce	S 49°30' W	33 links (21.78 feet)
8" Spruce	S 66° E	30 1/2 links (20.13 feet)	8" Spruce	N 25° W	17 links (11.22 feet)

The above record is on file with the Minnesota Historical Society in St. Paul, Minnesota, copies are filed with the Cass County Highway Department, Surveyor's Office (CCHD/SO).

July 1915 H.F. Baldwin, Cass County Deputy Surveyor, Curo Book 61, image 93, on file in the CCHD/SO, states "Start Transit Lien East." On image 98 states "We place I.M. in position where a Tamarack squared Cor stood. Left Tamarack as guard stake for I.M. As old B.T.s are good we do not dig witness pits."

Nov. 1915 J.W. Curo, LS 1428, filed the plat of WABEDO PASS, in the Cass County Recorders Office (CCRO), as Document Number 42365. This plat indicates a 2 1/4 " x 4' I.M. at the subject corner.

Jan. 1921 B. Clark, LS 231, Survey Record No. 487, Book C, page 560 and Curo Book 167, page 52, on file in the CCHD/SO, states "the cor to Sec 21-22-27-28, E. of the I.M. 11.0'."

1939 Civilian Conservation Corps, Washburn Lake Camp, Book Number 13, page 16, on file in the CCHD/SO, indicates at 5280' from South – set app. Sec cor.

Aug. 1940 H.J. Curo, LS 3417, Curo Book 436, image 60, on file in the CCHD/SO, lists the 1870 GLO witness trees and states "We find these and a 2 1/2 x 48" IM." On image 65 he lists the following new witnesses:

10" Spruce	N 57°42' E	9.78 feet	7" Spruce	S 50°30' W	27.60 feet
14" Spruce	N 70°30' W	22.52 feet	14" Spruce	S 38° E	44.20 feet

1941 Civilian Conservation Corps, Washburn Lake Camp, Book Number 14, page 6, on file in the CCHD/SO, indicates at 5280' from South – set app. cor.

Jan. 1947 J.W. Curo, LS 1428, Survey Record No. 609, Book D, page 325, on file in the CCHD/SO, lists the 1940 witness trees.

Circa 1980 W.E. Curo, LS 11395, Curo Book 167, page 86, on file in the CCHD/SO, lists the following witnesses for the subject corner:

7" Balsam	South	26.60 feet	9" Balsam	East	35.23 feet
9" Balsam	West	31.74 feet			

Nov. 1988 R.A. Mustonen, LS 11946, Certificate of Survey, copy on file in the CCHD/SO, indicates an iron monument found at the subject corner.

Jan. 2011 B. Hippen, technician, records of the CCHD/SO, found 2.25 inch outside diameter iron pipe with a plumber cap, up 1.0 foot, 105'+, - South of Lake Louise and witnessed as follows:

6" Balsam	N 51° E	29.50 feet	5" Spruce	S 03° W	65.57 feet
10" Spruce	N 77° W	32.32 feet	8" Ash	S 27° W	36.02 feet
11" Balsam (down)	West	31.7 feet			

The monument, recovered and established references for the position are shown on the face of this document.

Analysis of the recovered record data, field evidence and survey measurements, indicates that the monument found by CCHD/SO in 2011 is the correct perpetuation of this corner.

County Coordinates (Cass County North)
 Northing 142545.16
 Easting 500233.91