



A000602208

OFFICE OF THE COUNTY RECORDER
CASS COUNTY, MINNESOTA
CERTIFIED, FILED, AND/OR
RECORDED ON

5/8/2014 11:38:19 AM

AS DOC #: A000602208

PAGES: 2

REC FEES: 0.00

KATHRYN M. NORBY
CASS COUNTY RECORDER

BY SR _____ Dep

Page 1 of 2 A000602208

Twp 140 Rge 27 Index No. E.0-17.0

CERTIFICATE OF LOCATION OF GOVERNMENT CORNER

Northeast corner of Section 10, Township 140 N., Range 27 W., 5th P.M.
State of Minnesota, County of Cass

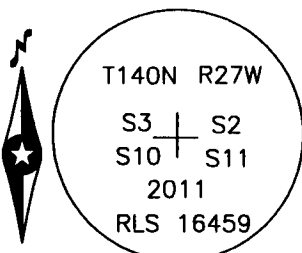
At the corner location shown on the sketch:

On 11 Aug. 2011 found a rust ring, down 2.5 feet, vertical for 0.3', 2'± north of
centerline of CSAH #7.

left monument as found lowered monument removed monument (explain)

On 26 Oct. 2011 placed a 1 inch by 18 inch Aluminum tube with Aluminum cap,
down 0.05 foot, 2'± north of new centerline of CSAH #7.

Monument

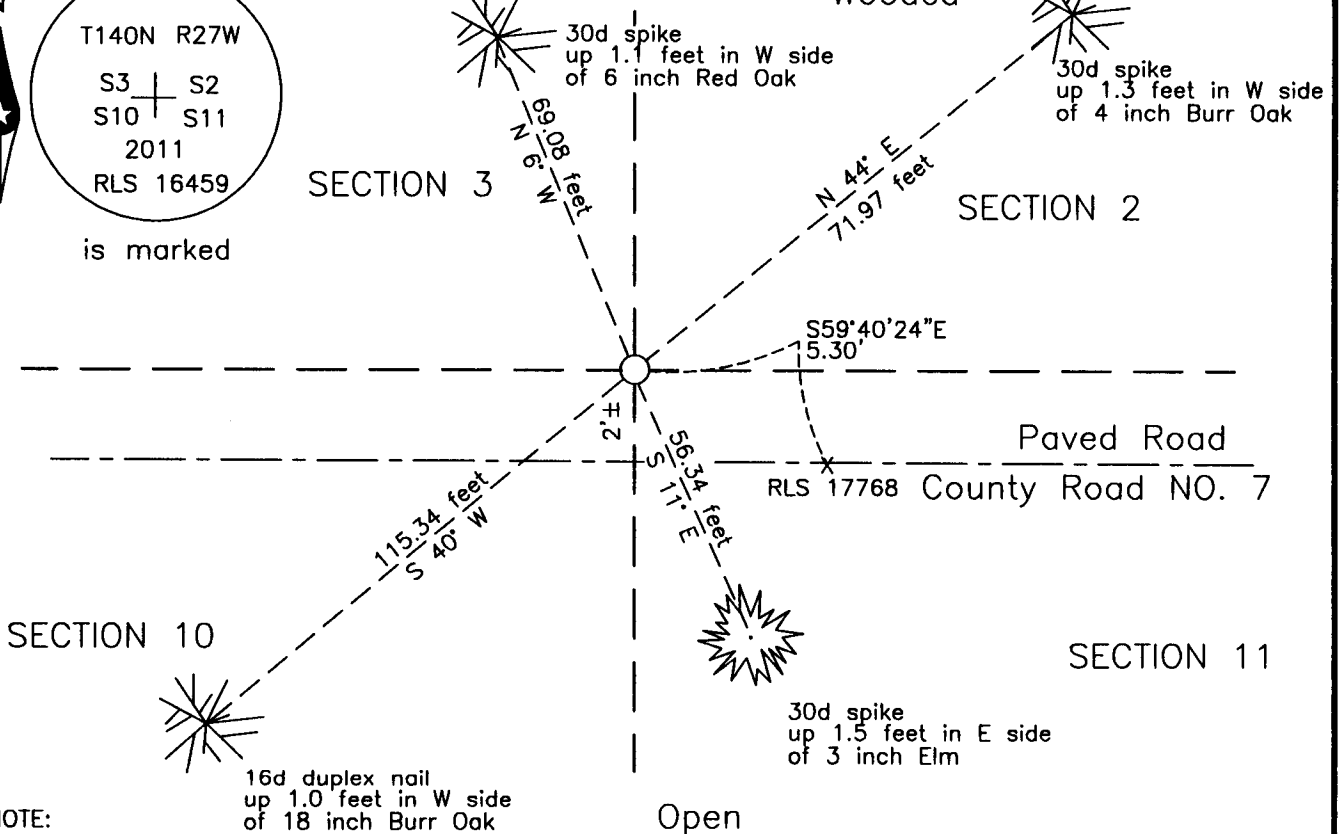


is marked

SKETCH OF REFERENCE TIES

NOT TO SCALE

Wooded



NOTE:

All bearings are true

Statement of evidence relative to this corner location is on the back of this page.

I hereby certify that this survey, plan or report was prepared by me or under my direct supervision and that I am a duly Licensed Land Surveyor under the laws of the State of Minnesota.

Terry L. Freeman, Cass County Surveyor

Date 5/7/14 MN License No. 21367

Statement of Evidence**Northeast corner of Section 10, Township 140 North, Range 27 West, 5th Principal Meridian.**

- Dec. 1873 F.G. Winston, General Land Office (GLO) Deputy Surveyor, notes for the subdivision of Township 140 North, Range 27 West, set a post for the original corner and referenced it as follows:
 10" W. Birch N 31° E 12 links (7.92 feet) 5" Burr Oak N 73° W 16 links (10.56 feet)
 8" W. Birch S 6° E 20 links (13.20 feet) 4" Maple S 88°20' W 33 links (21.78 feet)
 The above record is on file with the Minnesota Historical Society in St. Paul, Minnesota, copies are filed with the Cass County Highway Department, Surveyor's Office (CCHD/SO).
- Oct. 1906 J.W. Curo, Cass County Surveyor, LS 1428, Survey Record Number 154, Book A, page 308 and Curo Book 42, page 38, on file in the CCHD/SO, Record states "true section corner stands S 83°20' E, (Field notes state this as E 6° 40' S) 38.40 feet" The pictorial on page 312 indicates the half mile distance to be 2658 feet. He lists the GLO bearing trees and states "We find the oak standing plainly marked and the roots of the other trees from which we set a 4x4x36 inch wood post well into the ground for the true corner".
- April 1910 A.W. Moulster, LS 967, Deputy Cass County Surveyor, Curo Book 48-1, page 59, on file in the CCHD/SO, states "at 5125 True NW cor of 11 sets south 47.5 feet.
- Sept. 1911 G. Snell, Assistant Cass County Surveyor, Survey Record Number 154, Book A, page 311, on file in the CCHD/SO, states "pull up the true corners and puts in their place, a good galvanized iron monuments 2.1/2 by 48 inches in size, set in a bed of cement and concrete".
- 1937 Civilian Conservation Corps (CCC), Washburn Lake Camp, Book Number 5, page 46, on file in the CCHD/SO, indicates at 5280' from E. I.P. in road center.
- 1963 Cass County Highway Department (CCHD), S.P. 11-607-02, on file in the CCHD, plan indicates subject corner assumed at Station 400+25.
- Dec. 2006 B.W. Skipton, LS 17768, unrecorded Certificate of Location, on file in the CCHD/SO, indicates a 1/2 inch by 14 inch iron pipe was set based on the CCHD alignment of CSAH # 007 and witnessed as follows:
 5" W. Oak N 18° W 72.78 feet 3" W. Oak N 34° E 72.42 feet
 2" W. Oak S 14° E 52.74 feet
- June 2011 B. Hippen, technician, records of the CCSO, found a 7/8 inch outside diameter iron pipe, capped RLS 17768, on centerline CSAH # 007.
- Aug. 2011 B. Hippen, technician and P. Swentkofske, CCHD equipment operator, records of the CCHD/SO, prior to reconstruction of CSAH # 007, excavated a 18 foot east-west by 8 foot north-south area based on record dimensions. The dig was 3 feet deep to natural soil. A rust ring was recovered down 2.5 feet followed vertically for 0.3 foot. A 3/8 inch pin, broken and leaning from vertical, surrounded by pieces of concrete, possibly an anchor pin for monument also down 2.5 feet.
- Oct. 2011 B. Hippen, technician, records of the CCHD/SO, set a 1 inch by 18 inch aluminum tube with aluminum cap at the rust ring, location which fit well with the 1906 survey distance, down 0.05 foot, 2 feet, more or less North of new centerline and witnessed as follows:
 6" R. Oak N 6° W 69.08 feet 4" B. Oak N 44° E 71.97 feet
 18" B. Oak S 40° W 115.34 feet 3" Elm S 11° E 56.34 feet

The recovered and established witnesses for this corner position are shown on the face of this document.

Analysis of the recovered record data, field evidence and survey measurements, indicates that the monument set in 2011 by the CCHD/SO, is the correct perpetuation of this corner.

County Coordinates (Cass County North)

Northing 158179.37

Easting 536257.07