



A000602206

OFFICE OF THE COUNTY RECORDER  
CASS COUNTY, MINNESOTA  
CERTIFIED, FILED, AND/OR  
RECORDED ON

5/8/2014 11:38:17 AM

AS DOC #: A000602206

PAGES: 2

REC FEES: 0.00

KATHRYN M. NORBY  
CASS COUNTY RECORDER

BY SR \_\_\_\_\_ Dep

Page 1 of 2 A000602206

Twp 140 Rge 27 Index No. E.0-13.0

### CERTIFICATE OF LOCATION OF GOVERNMENT CORNER

Northeast corner 9 of Section 9, Township 140 N., Range 27 W., 5th P.M.  
State of Minnesota, County of Cass

At the corner location shown on the sketch:

On 9 Aug. 2011 found a 3.5 inch by 30 inch pointed piece of wood, horizontal,  
down 7.0 feet, on centerline of CSAH #7.

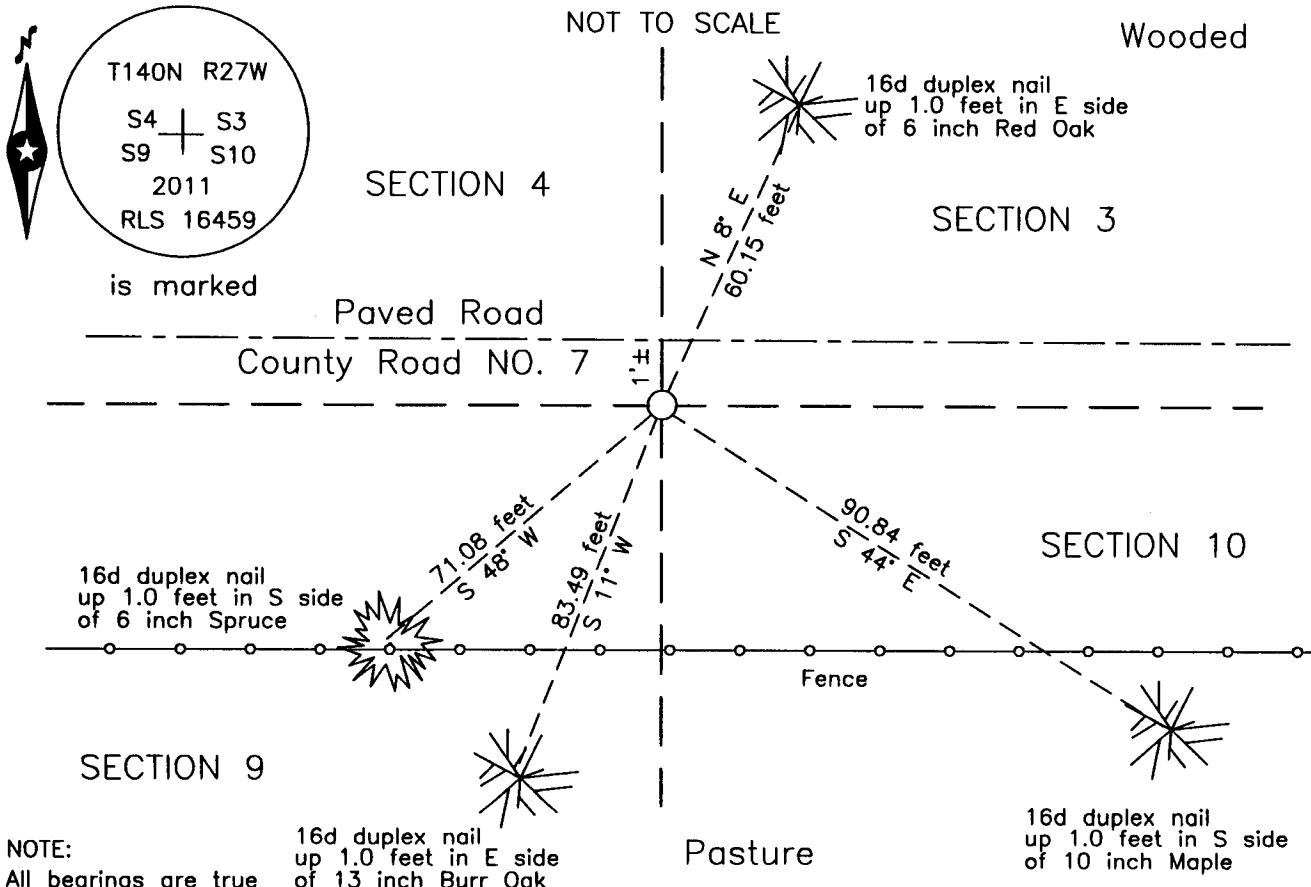
left monument as found     lowered monument     removed monument (explain)

On 26 Oct. 2011 placed a 1 inch by 30 inch Aluminum tube with Aluminum cap,  
down 0.05 foot, 1'± south of centerline of CSAH #7.

Monument

SKETCH OF REFERENCE TIES

NOT TO SCALE



NOTE:

All bearings are true

16d duplex nail  
up 1.0 feet in E side  
of 13 inch Burr Oak

Pasture

16d duplex nail  
up 1.0 feet in S side  
of 10 inch Maple

Statement of evidence relative to this corner location is on the back of this page.

I hereby certify that this survey, plan or report was prepared by me or under my direct supervision and that I am a duly Licensed Land Surveyor under the laws of the State of Minnesota.

Terry L. Freeman, Cass County Surveyor  
Date 5/7/14 MN License No. 21367

Statement of Evidence

**Northeast corner of Section 9, Township 140 North, Range 27 West, 5th Principal Meridian.**

- Dec. 1873 F.G. Winston, General Land Office (GLO) Deputy Surveyor, notes for the subdivision of Township 140 North, Range 27 West, set a post for the original corner and referenced it as follows:  
 24" N. Pine N 22°45' E 34 links (22.44 feet)      24" N. Pine N 74°50' W 78 links (51.48 feet)  
 28" N. Pine S 51°20' W 95 links (62.70 feet)      6" Maple S 15°15' E 65 links (42.90 feet)  
 The above record is on file with the Minnesota Historical Society in St. Paul, Minnesota, copies are filed with the Cass County Highway Department, Surveyor's Office (CCHD/SO).
  
- Oct. 1906 J.W.Curo, Cass County Surveyor, LS 1428, Survey Record Number 154, Book A, page 308 and Curo Book 42, page 38, on file in the CCHD/SO, Record lists the GLO bearing trees and states "We find the old bearing trees from which we set a 4x4x36 inch wood post well into the ground for the true corner". The field notes state "The stake was a small Pop. 4 inches though squared up but had died and was down. The 28 inch wp called for in field notes was in evidence as to course but was too far away. The maple called for was not found. Found 4 trees down with spots on them running E & W showed this was correct." Page 45 of the field notes state "found little pop tree squared up for NW Cor of 10 and found old sec line blazes intersect @ this point so established the corner from old Bearing trees with no marks on them". A new witness is noted as follows:  
 6" Green W. Pine stump S 1° E 15.40 feet
  
- Sept. 1911 G. Snell, Assistant Cass County Surveyor, Survey Record Number 154, Book A, page 311, on file in the CCHD/SO, states "pull up the true corners and puts in their place, a good galvanized iron monuments 2.1/2 by 48 inches in size, set in a bed of cement and concrete".
  
- Jan 1918 J.F.Pomasel, LS 1728, County Ditch No. 13, on file in the CCHD/SO, Ditch Shelf 2, Book 9, page 29, 41, 43 and 52, notes the subject corner set in Road, page 56 indicates subject corner and east line of Section 9.
  
- 1937 Civilian Conservation Corps (CCC), Washburn Lake Camp, Book Number 5, page 48, on file in the CCHD/SO, indicates at 5280' from east set 3" Aspen stake 1 Rod south of approx cor.
  
- 1963 Cass County Highway Department(CCHD), S.P. 11-607-02, on file in the CCHD, plan indicates subject corner assumed at Station 347+44.
  
- Aug. 2011 B. Hippen, technician and P. Swentkofske, CCHD equipment operator, records of the CCHD/SO, prior to reconstruction of CSAH # 007, excavated a 16 foot east-west by 12 foot north-south area based on record dimensions. The dig was 10 feet deep to natural soil. A 3.5 inch wide by 30 inch long piece of wood lying horizontal was recovered down 7 feet.
  
- Oct. 2011 B. Hippen, technician, records of the CCHD/SO, set a 1 inch by 30 inch aluminum tube with aluminum cap at the pointed end of the recovered wood location which fit well with the 1906 survey distances, down 0.05 foot, 1 foot, more or less South of new centerline, place recovered wood on southwest side of monument and witnessed as follows:  
 6" R. Oak N 8° E 60.15 feet      10" Maple S 44° E 90.84 feet  
 6" Spruce S 48° W 71.08 feet      13" B. Oak S 11° W 83.49 feet

The recovered and established witnesses for this corner position are shown on the face of this document.

**Analysis of the recovered record data, field evidence and survey measurements, indicates that the monument set in 2011 by the CCHD/SO, is the correct perpetuation of this corner.**

**County Coordinates (Cass County North)**

**Northing 158219.78**

**Easting 530941.80**