



A000602205

OFFICE OF THE COUNTY RECORDER
CASS COUNTY, MINNESOTA
CERTIFIED, FILED, AND/OR
RECORDED ON

5/8/2014 11:38:16 AM

AS DOC #: A000602205

PAGES: 2

REC FEES: 0.00

KATHRYN M. NORBY
CASS COUNTY RECORDER

BY SR Dep



Page 1 of 2 A000602205

Twp 140 Rge 27 Index No. E .0-09.0

CERTIFICATE OF LOCATION OF GOVERNMENT CORNER

Northeast corner of Section 8, Township 140 N., Range 27 W., 5th P.M.
State of Minnesota, County of Cass

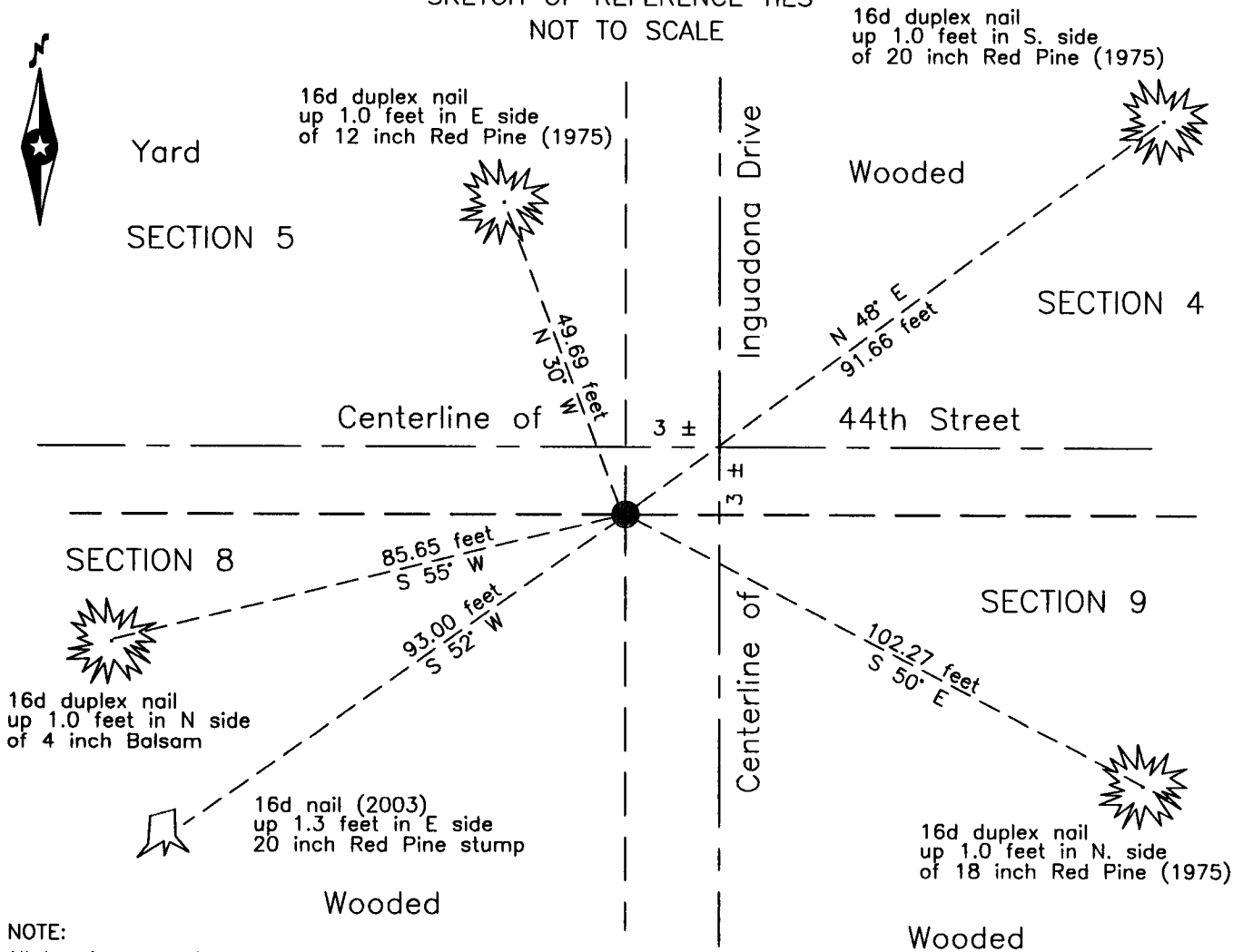
At the corner location shown on the sketch:

On 29 June 2011 found a Cast Iron Monument, down 0.4 foot, 3 feet± south of
the centerline of 44th Street and 3 feet± west of Ingudona Drive.

left monument as found lowered monument removed monument (explain)

On _____ placed _____

SKETCH OF REFERENCE TIES NOT TO SCALE



NOTE:
All bearings are true

Statement of evidence relative to this corner location is on the back of this page.

I hereby certify that this survey, plan or report was prepared by me or under my direct supervision and that I am a duly Licensed Land Surveyor under the laws of the State of Minnesota.

Terry L. Freeman, Cass County Surveyor

Date 5/7/14 MN License No. 21367



Statement of Evidence

Northeast corner of Section 8, Township 140 North, Range 27 West, 5th Principal Meridian.

Dec. 1873 F.G. Winston, General Land Office (GLO) Deputy Surveyor, notes for the subdivision of Township 140 North, Range 27 West, set a post for the original corner and referenced it as follows:
8" Birch N 59°10' W 39 links (25.74 feet) 8" Aspen S 81°40' W 30 links (19.80 feet)
6" Maple S 73°20' E 50 links (33.00 feet) 7" Aspen N 30°15' E 76 links (50.16 feet)
The above record is on file with the Minnesota Historical Society in St. Paul, Minnesota, copies are filed with the Cass County Highway Department, Surveyor's Office (CCHD/SO).

Jan. 1918 J.F. Pomasel, LS 1728, County Ditch No. 13, on file in the CCHD/SO, Ditch Shelf 2, Book 9, page 33, indicates road intersection at the subject corner.

Feb. 1918 J.F. Pomasel, LS 1728, County Ditch No. 13, Lateral No. 5, on file in the CCHD/SO, Ditch Shelf 2, Book 10, page 10, notes end of Lat. Very near the subject corner.

1937 Civilian Conservation Corps (CCC), Washburn Lake Camp, Book Number 5, page 50, on file in the CCHD/SO, indicates Approx. Cor at intersection of roads N-S & E 32.6' west to reference on Linden Beach sign.

May 1942 J.W. Curo, LS 1428, Cass County Surveyor, Survey Record Number 599, Book D, page 305 and Curo Book 243, pages 38-40, on file in the CCHD/SO, states "We find this corner previously established and recognized by all I this neighborhood." Also "We find the iron to be a rifle barrel- Road grader bent the top. We dig down - remove the remove the drift so as to preserve the true pt. Straighten an put back. Corner is 1 1/4 ft West of NS road and in line with road E and S." New witness is noted as follows:

15" N. Pine	N 53°00' E	77.65 feet	16" N. Pine	N 55°50' W	50.61 feet
17" N. Pine	S 1°35' W	93.21 feet	12" N. Pine	South	101.80 feet

Jan. 1949 H.J. Curo, LS 3417, Curo Book 243, pages 89, 93-94 and 124, on file in the CCHD/SO, states " I dig up the I.M. at this the NE Cor Sec 8".

Oct. 1975 W.E. Curo, LS 11395, Curo Book 306, page 126, on file in the CCHD/SO, and Certificate of Location of Government Corner, Document #223884, on file in the Cass County Recorders Office (CCRO), found a 20 inch, bent rifle barrel, replaced with a Cast Iron Monument, down 4 inches in the center line of the North to South road and 3 feet, more or less, South of center line of the East to West road and witnessed as follows:

6" N. Pine	N 30°06' W	49.24 feet	15" N. Pine	N 48°02' E	90.82 feet
14" N. Pine	S 49°42' E	101.55 feet	20" N. Pine	S 51°55' W	93.00 feet

April 1976 W.E. Curo, LS 11395, Curo Book 304, page 153, on file in the CCHD/SO, indicates the subject corner.

Aug. 1983 W.E. Curo, LS 11395, Curo Book 309, page 63, on file in the CCHD/SO, indicates the subject corner in Y road intersection.

Aug. 1984 W.E. Curo, LS 11395, Curo Book 310, page 65, on file in the CCHD/SO, indicates the subject corner.

Dec. 2002 L. Leuelling, LS 16089, Certificate of Survey, on file in the CCHD/SO, indicates a monument found at the subject corner.

June 2011 B. Hippen, technician, records of the CCHD/SO, found a Cast Iron Monument, down 0.4 foot, 3 feet, more or less, South of 44th Street and 3 feet, more or less, West of Inguadona Drive and witnessed as follows:

12" N. Pine (1975)	N 30° W	49.24 feet	20" N. Pine (1975)	N 48° E	91.66 feet
18" N. Pine (1975)	S 50° E	102.27 feet	4" Balsam	S 55° W	85.65 feet
20" N. Pine stump (1975)	S 52° W	93.0 feet			

The recovered and established witnesses for this corner position are shown on the face of this document.

Analysis of the recovered record data, field evidence and survey measurements, indicates that the monument recovered in 2011 by the CCHD/SO, is the accepted location of this corner.

County Coordinates (Cass County North)

Northing 158212.30

Easting 525701.54