

Page 1 of 2 A000602202



A000602202

OFFICE OF THE COUNTY RECORDER  
CASS COUNTY, MINNESOTA  
CERTIFIED, FILED, AND/OR  
RECORDED ON

5/8/2014 11:38:13 AM

AS DOC #: A000602202

PAGES: 2

REC FEES: 0.00

KATHRYN M. NORBY  
CASS COUNTY RECORDER  
BY SR \_\_\_\_\_ Dep

Twp 140 Rge 26 Index No. A.0-11.0

### CERTIFICATE OF LOCATION OF GOVERNMENT CORNER

North Quarter corner of Section 4, Township 140 N., Range 26 W., 5th P.M.  
State of Minnesota, County of Cass

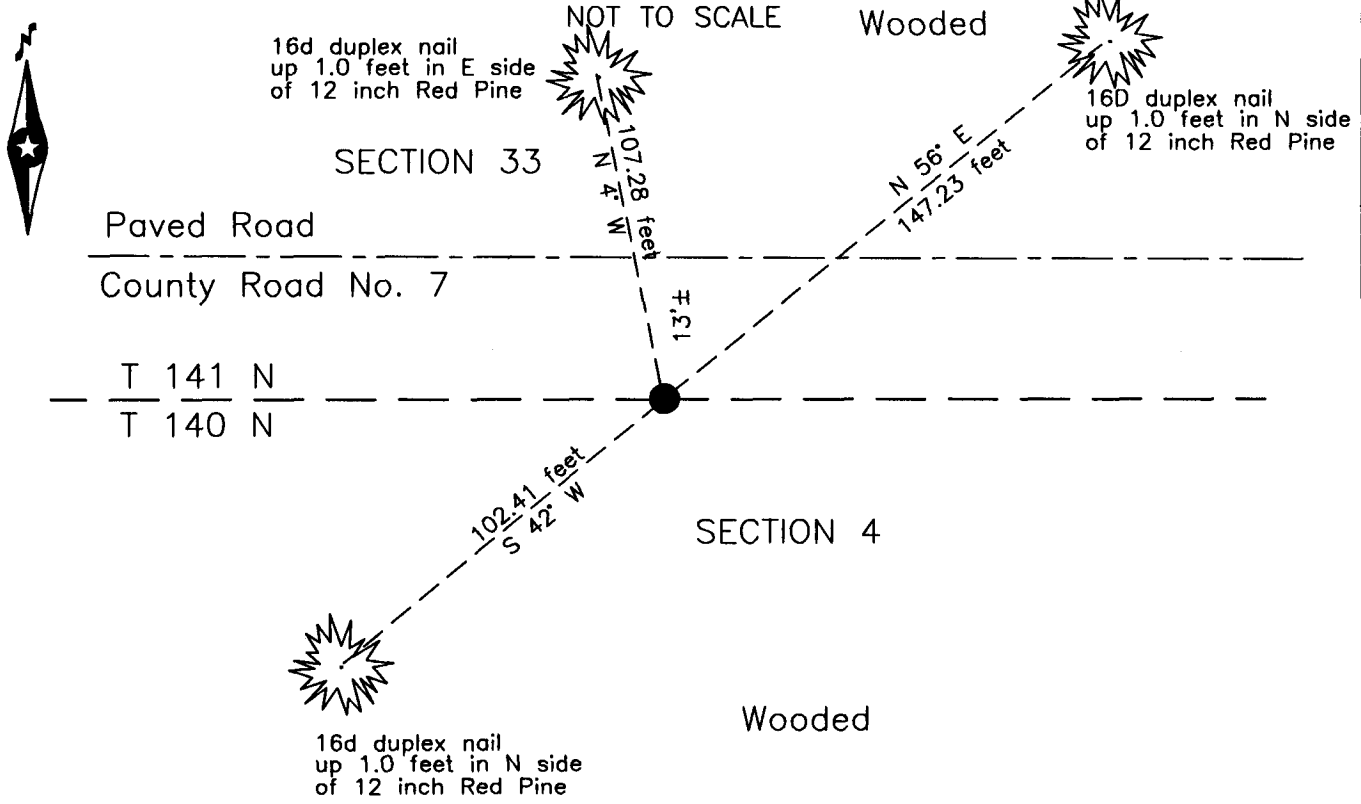
At the corner location shown on the sketch:

On 1 July 2011 found a 1.25 inch outside diameter iron pipe, down 0.2 foot,  
13'± south of centerline of CSAH #7.

left monument as found     lowered monument     removed monument (explain)

On 21 Nov. 2011 placed a 1.5 inch magnetic concrete nail, over iron pipe,  
13'± south of new centerline of CSAH #7.

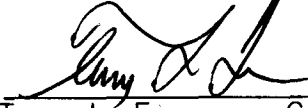
#### SKETCH OF REFERENCE TIES



NOTE:  
All bearings are true

Statement of evidence relative to this corner location is on the back of this page.

I hereby certify that this survey, plan or report was prepared by me or under my direct supervision and that I am a duly Licensed Land Surveyor under the laws of the State of Minnesota.

  
Terry L. Freeman, Cass County Surveyor  
Date 5/7/14 MN License No. 21367



Statement of Evidence

**North Quarter corner of Section 4, Township 140 North, Range 26 West, 5th Principal Meridian.**

- May 1871 Allen and Putnam, General Land Office (GLO) Deputy Surveyors, notes for the subdivision of Township 140 North, Range 26 West, did not set the original corner.  
The above record is on file with the Minnesota Historical Society in St. Paul, Minnesota, copies are filed with the Cass County Highway Department, Surveyor's Office (CCHD/SO).
- 1971 D. Coulter, LS 5852, Cass County Land Corner Record, on file in the CCHD/SO, set pipe at the lost position.
- July 2011 B. Hippen, technician, records of the CCHD/SO, found a 1.25 inch outside diameter iron pipe, top is bent, down 0.3 foot, 13 feet, more or less South of centerline CSAH 7 and witnessed as follows:  

12" N. Pine	N 4° W	107.28 feet	12" N. Pine	N 56° E	147.23 feet
20" N. Pine	S 42° W	102.41 feet			
- Nov. 2011 B. Hippen, technician, records of the CCHD/SO, set a magnetic nail, at the location of the recovered pipe after construction, 13 feet, more or less South of new centerline CSAH 7.

The recovered and established witnesses for this corner position are shown on the face of this document.

**Analysis of the recovered record data, field evidence and survey measurements, indicates that the monument recovered in 2011 by the CCHD/SO, is the accepted location of this corner.**

**County Coordinates (Cass County North)**

**Northing 163432.33**  
**Easting 560215.84**