

CERTIFICATE OF LOCATION OF GOVERNMENT CORNER

East Quarter Corner of Section 8
Township 138 N, Range 30 W, 5th P.M.
STATE OF MINNESOTA, COUNTY OF Cass



A000602200

OFFICE OF THE COUNTY RECORDER
CASS COUNTY, MINNESOTA
CERTIFIED, FILED, AND/OR
RECORDED ON

5/8/2014 11:38:11 AM

AS DOC #: A000602200

PAGES: 2

REC FEES: 0.00

KATHRYN M. NORBY
CASS COUNTY RECORDER

BY SR Dep

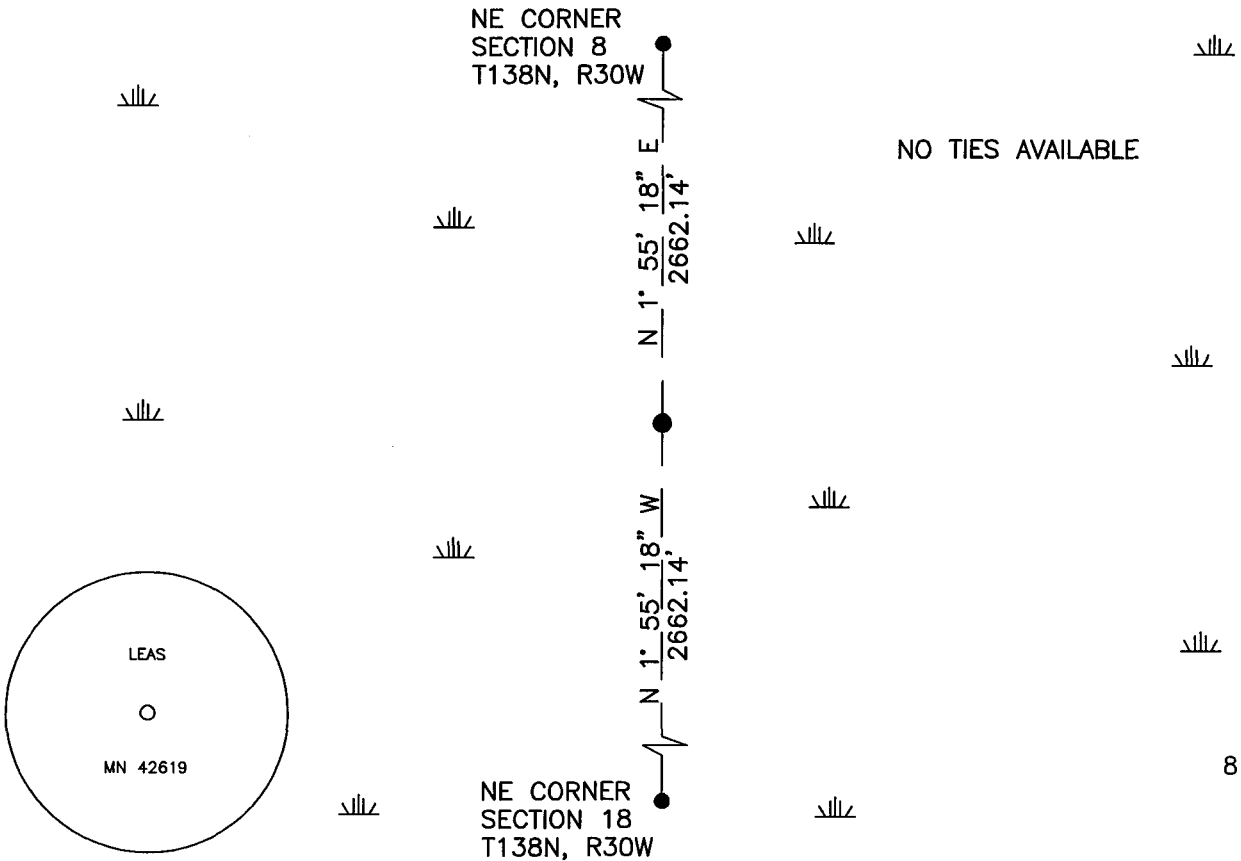
On _____, found a(n): _____
DATE

- left monument as found
- lowered monument
- removed monument (explain)
- raised monument

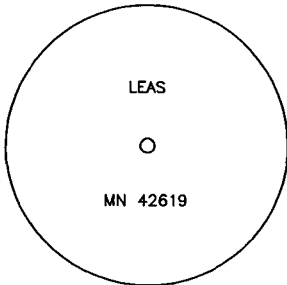
On 12/04/2012, set a(n): 5/8"X24" Rebar With Plastic Cap
DATE
Stamped "Leas MN 42619", Up 0.4' in Swamp.

See "Statement of Evidence" for further details (on back)

(reserved for recording data)

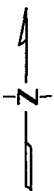


NO TIES AVAILABLE



"SKETCH OF REFERENCE TIES"

(not to scale - bearings are magnetic)



Ties are measured to center of monument unless otherwise noted.

UNITS = Metric English

CASS COUNTY SOUTH COORDINATES

Northing: 328851.957

Easting: 493507.856

NAD 83/2007 Adjustment.

Obtained by RTK GPS observations.

I hereby certify that this survey, plan, or report was prepared by me or under my direct supervision, and that I am a duly Licensed Land Surveyor under the laws of the State of Minnesota.

signature
Jarrett M. Leas, Minnesota License No. 42619

5/05/14
date



Statement of Evidence

East Quarter corner Section 8, Township 138 North, Range 30 West, 5th Principal Meridian.

- Aug. 1865 G.B.Wright, GLO Deputy Surveyor, in the notes of the subdivision of Township 138 North, Range 30 West set a post for the original corner and referenced it as follows:
22" N Pine N 72 3/4° E 306 links (201.96 feet) 12" Blk Pine N 2 3/4° W 460 links (303.60 feet)
Said records are on file at the Minnesota Historical Society, St. Paul, Minnesota, copies are filed with the Cass County Surveyor's Office (CCSO).
- Circa 1924 Minnesota Department of Transportation (MnDOT), Highway Number 19 plan, map, Lathrop to Pine River, on file in the Cass County Records Office roll file, indicates a distance of 1639.4' west to centerline of State Road 19 which is now Hwy 371 and 2687.0' to c ¼ of 8 which is an iron pipe.
- Circa 1960 MnDOT, Highway Number 371 plan, Map file 29-14_006, on file in the MnDOT web site, indicates this corner assumed.
- Nov. KLJ field crews search and find no evidence of the corner. KLJ computes a lost corner position from 2012 proportioning between the SE and NE corners of said section, splitting the overall distance of 5324.28' on a bearing of N1°55'18"E and sets a new monument stamped "Leas MN 42619". Monument is witnessed with the ties shown on the front of this certificate, Jarrett Leas, RLS# 42619, after analysis of record and survey information accepts this lost corner position.