



A000601709

OFFICE OF THE COUNTY RECORDER
 CASS COUNTY, MINNESOTA
 CERTIFIED, FILED, AND/OR
 RECORDED ON

4/17/2014 11:13:19 AM

AS DOC #: A000601709

PAGES: 2

REC FEES: 0.00

KATHRYN M. NORBY
 CASS COUNTY RECORDER

BY SR _____ Dep

Index No. N-9

CERTIFICATE OF LOCATION OF GOVERNMENT CORNER

Northeast Corner of Section 20
 Township 145 N, Range 30 W, 5th P.M.
 STATE OF MINNESOTA, COUNTY OF CASS

On 04/14/2010, found a(n): 6" concrete monument with a
DATE
3.5" Brass cap stamped 1933, 1.0' Above Ground

- left monument as found lowered monument
 removed monument (explain) raised monument

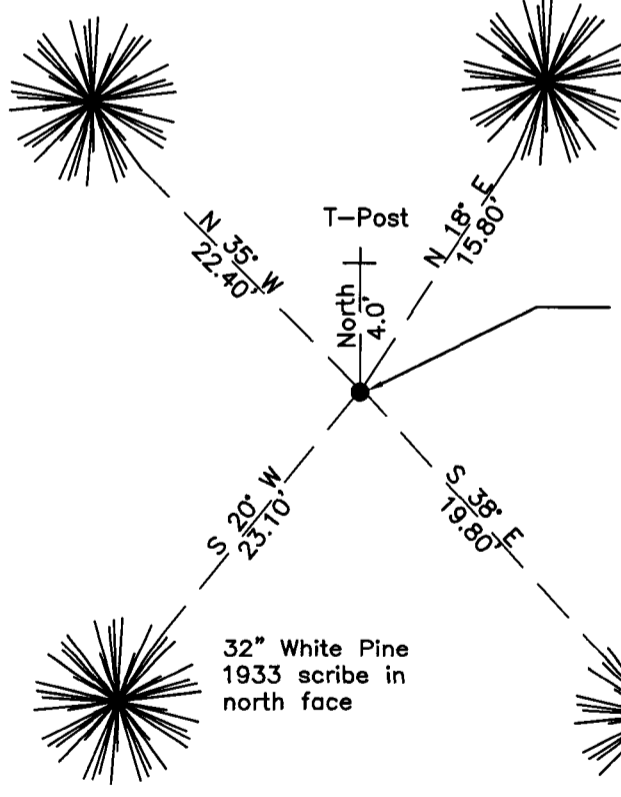
On _____, set a(n): _____
DATE

See "Statement of Evidence" for further details (on back)

(reserved for recording data)

28" Red Pine
 1933 scribe in
 southeast face

30" White Pine
 1933 scribe in
 south face

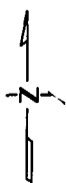


6" concrete monument 3.5"
 Brass Cap stamped 1933, 1.0'
 Above Ground

32" White Pine
 1933 scribe in
 north face

28" White Pine
 1933 scribe in
 northwest face

17	16
20	21



"SKETCH OF REFERENCE TIES" (not to scale - bearings are magnetic)

Ties are measured to center of monument
 unless otherwise noted.

UNITS = Metric English

UTM COORDINATES, ZONE 15

Northing: 17214807.280
 Easting: 1268711.916

NAD 83/1996 Adjustment.
 Obtained by RTK GPS observations.

I hereby certify that this survey, plan, or report was prepared by me or under my direct supervision, and that
 I am a duly Licensed Land Surveyor under the laws of the State of Minnesota.

Ross Wamre
 signature

4/7/14
 date

Ross Wamre, Minnesota License No. 45334



STATEMENT OF EVIDENCE: Corner common to Sections 16, 17, 20 and 21 of Township 145 North, Range 30 West of the 5th Principal Meridian

1874; This corner was originally established by P.H. Conger his field notes indicate a post set at this corner position, witnessed by:

- Yellow Pine 8" North 15° West, 58 links
- Black Pine 10" South 63° West, 75 links
- Aspen 3" South 56° East, 29 links

1916; Railroad Valuation Map 1804CS2. Minneapolis St. Paul & Sioux St. Marie Railway Company's Right of Way and Track Maps shows a distance tie to the railroad from this corner. Information on file with the Minnesota Department of Transportation.

1926; C.L. Van Gusen, Forest Ranger, USFS 874 forms, found a 10" squared white pine post witnessed. Information on file with the USFS office in Cass Lake.

- White Pine 24" South 30° West, 35'
- Norway Pine 22" North 85° West, 20'

1933; Resurvey by GLO, Willis W. Bandy, set by lost proportionate methods, a 6" diameter, 2' long cylindrical concrete monument, 20" in the ground, with a 3.5" stamped Brass Cap. Witnessed by:

- White Pine 12" North 18° East, 24 links
- White Pine 10" South 38° East, 30 links
- White Pine 10" South 20° West, 35 links
- Norway Pine 14" North 45° West, 34 links

1946; State of Minnesota Department of Highways Right-of-Way Index map file 32-86 shows a Brass Cap Set in Concrete in place at this corner location. Information on file with the Minnesota Department of Transportation.

1966; William H. Okerman, RLS #6807 and James Ebstrom, USFS Book 2 of Township 145 North, Range 30 West, page 29, found monument in good condition with all bearing trees. An Affidavit as to Location of Government Corner is on file at the Cass County Office of Register of Deeds. Corner is witnessed by:

- White Pine 21" North 18° East, 15.8' re-scribed S 16 BT (1933 tie)
- White Pine 18" South 38° East, 19.8' re-scribed S 21 BT (1933 tie)
- White Pine 18" South 20° West, 23.10' re-scribed S 20 BT (1933 tie)
- Norway Pine 20" North 35° West, 22.4' with scribe (1933 tie)

1990; C. Krause and G.B. , USFS Book 2 of Township 145 North, Range 30 West, page 29, found monument flush with ground in North and West Pine stand tagged and paint bearing tags.

- White Pine 25" North 18° East, 15.8' with scribe & spike (1933 tie)
- White Pine 21" South 38° East, 19.8' with scribe & spike (1933 tie)
- White Pine 25" South 20° West, 23.10' scribe overgrown (1933 tie)
- Norway Pine 22" North 35° West, 22.4' scribe overgrown (1933 tie)
- 8' Steel Sign Post, North 4.0'

2010; A Kadrmas, Lee & Jackson survey crew found a 6" concrete monument with a 3.5" Brass Cap Standard GLO Monument, stamped 1933, 1.0' above ground. Witnesses found and established as shown on the face of this certificate.

2012; Ross Wamre, PLS #45334, after analysis of record and survey information accepts this monument as the correct perpetuation of the corner.

Contacts pertaining to this corner are as follows:

- | | |
|--|--|
| Cass County Recorder's Office | Cass County Engineers Office |
| Cass County Surveyors Office | Northern Engineering and Consulting Inc. |
| United States Forest Service | MnDOT – District Office 2 |
| Bureau of Indians Affairs – Bemidji | |
| Bureau of Land Management's (BLM) Northeastern States Field Office | |