



A000601708

OFFICE OF THE COUNTY RECORDER
CASS COUNTY, MINNESOTA
CERTIFIED, FILED, AND/OR
RECORDED ON

4/17/2014 11:13:18 AM

AS DOC #: A000601708

PAGES: 2

REC FEES: 0.00

KATHRYN M. NORBY
CASS COUNTY RECORDER

BY SR _____ Dep

Page 1 of 2 A000601708

Index No. L-21

CERTIFICATE OF LOCATION OF GOVERNMENT CORNER

East Quarter _____ Corner of Section 14
Township 145 N , Range 30 W , 5th P.M.
STATE OF MINNESOTA, COUNTY OF CASS

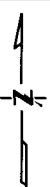
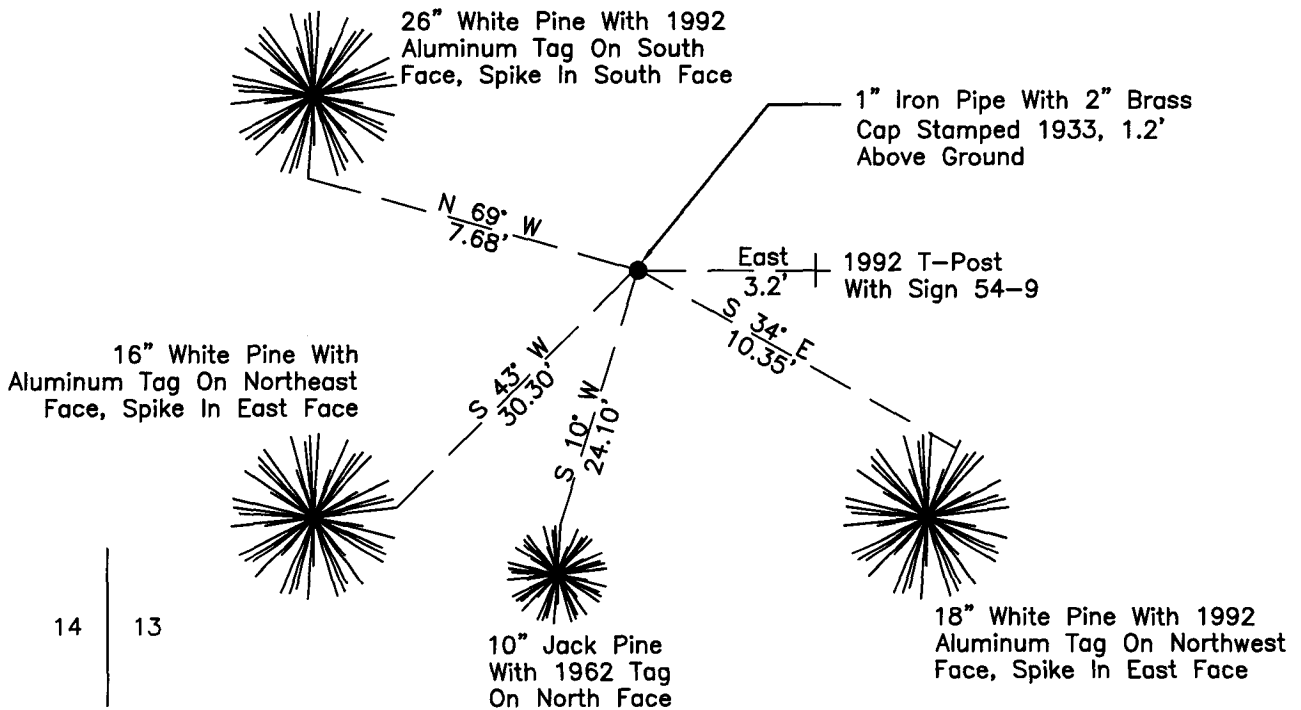
On 04/19/2010, found a(n): 1" Iron Pipe with a 2" Brass
DATE
Cap stamped 1933, 1.2' Above Ground

- left monument as found
- lowered monument
- removed monument (explain)
- raised monument

On _____, set a(n): _____
DATE

See "Statement of Evidence" for further details (on back)

(reserved for recording data)



"SKETCH OF REFERENCE TIES" (not to scale - bearings are magnetic)

Ties are measured to center of monument unless otherwise noted.

UNITS = Metric English

UTM COORDINATES, ZONE 15

Northing: 17217453.350

Easting: 1284453.999

NAD 83/1996 Adjustment.

Obtained by RTK GPS observations.

I hereby certify that this survey, plan, or report was prepared by me or under my direct supervision, and that I am a duly Licensed Land Surveyor under the laws of the State of Minnesota.

Ross Wamre
signature

4/7/14
date

Ross Wamre, Minnesota License No. 45334



STATEMENT OF EVIDENCE: Quarter Corner common to Sections 13 and 14 of Township 145 North, Range 30 West of the 5th Principal Meridian

1874; This corner was originally established by P.H. Conger for the GLO. His field notes indicate a wood post set at this corner position, witnessed by:

Blk Pine 10" North 56° West, 70 links
Blk Pine 4" North 75° East, 97 links

1933; Resurvey by GLO, Willis W. Bandy from remains of original bearing tree, set a 1" diameter, 3' long Iron Post, 27" in ground with stamped Brass Cap and witnessed by:

Jack Pine 10" South 28 ¾° East, 36 links (23.76')
Jack Pine 12" North 74 ½° West, 48 links (31.68')

1936; USFS 874 form, on file at the USFS office in Cass Lake, MN indicates that Lloyd Nelson found a metal pipe 6" above the ground witnessed by:

Jack Pine 11" South 29° East, 36.6 links (1933 Tie)
Jack Pine 14" North 85° West, 49.6 links (1933 Tie)

1962; USFS notes Book 1 of Township 145 North, Range 30 West, page 49, show that R.H. McDonald found the monument. An Affidavit as to Location of Government Corner is filed at the Cass County Office of the County Recorder under document No. A000590289. Corner is witnessed by:

Jack Pine Stump 10" South 28¾° East, 23.76' scribe visible (1933 Tie)
Jack Pine Stump 12" North 74½° West, 31.68' (1933 Tie)
Jack Pine 8" North 27° East, 9.7' marked: "¼ S13 B.T."
Jack Pine 7" South 10° West, 24.1' marked: "¼ S14 B.T."

1992; USFS notes Book 1 of Township 145 North, Range 30 West, page 49, show that G. Brama found GLO iron pipe with brass cap bent at ground level. He stated that the brass cap would be 6" above ground if straight witnessed by:

Jack Pine Snag 10" North 27° East, 9.7' (1962 Tie)
Jack Pine 9" South 10° West, 24.1' (1962 Tie)
White Pine 13" South 34° East, 10.10' scribed "¼ S13 B.T." set 60d nail in tree
White Pine 19" North 69° West, 7.90' scribed "¼ S14 B.T." set 60d nail in tree
This tree also has a FSLP tag marked: "Krause 1975"
Set 8' Steel Sign Post East, 3.2' with a sign
Set a FSLP on Jack Pine 15" North 80° East, 130' on East side of forest trail no. 2962

2010; A Kadrmas, Lee & Jackson survey crew found a 1" Iron Pipe with a 2" Brass cap standard GLO monument stamped 1933, 1.2' above ground, witnesses found and established as shown on the face of this certificate.

2012; Ross Wamre, RLS #45334, after analysis of record and survey information accepts this monument as the correct perpetuation of the corner.

Contacts pertaining to this corner are as follows:

Cass County Recorder's Office
Cass County Engineers Office
Cass County Surveyors Office
Northern Engineering and Consulting Inc.
United States Forest Service
MnDOT – District Office 2
Bureau of Indians Affairs – Bemidji
Bureau of Land Management's (BLM) Northeastern States Field Office