

# CERTIFICATE OF LOCATION OF GOVERNMENT CORNER

Northeast          Corner of Section 24  
Township 145 N , Range 30 W , 5th P.M.  
STATE OF MINNESOTA, COUNTY OF CASS



**A000601403**

**OFFICE OF THE COUNTY RECORDER  
CASS COUNTY, MINNESOTA  
CERTIFIED, FILED, AND/OR  
RECORDED ON**

**4/3/2014 11:30:14 AM**

**AS DOC #: A000601403**

**PAGES: 3**

**REC FEES: 0.00**

**KATHRYN M. NORBY  
CASS COUNTY RECORDER**

**BY SR \_\_\_\_\_ Dep**

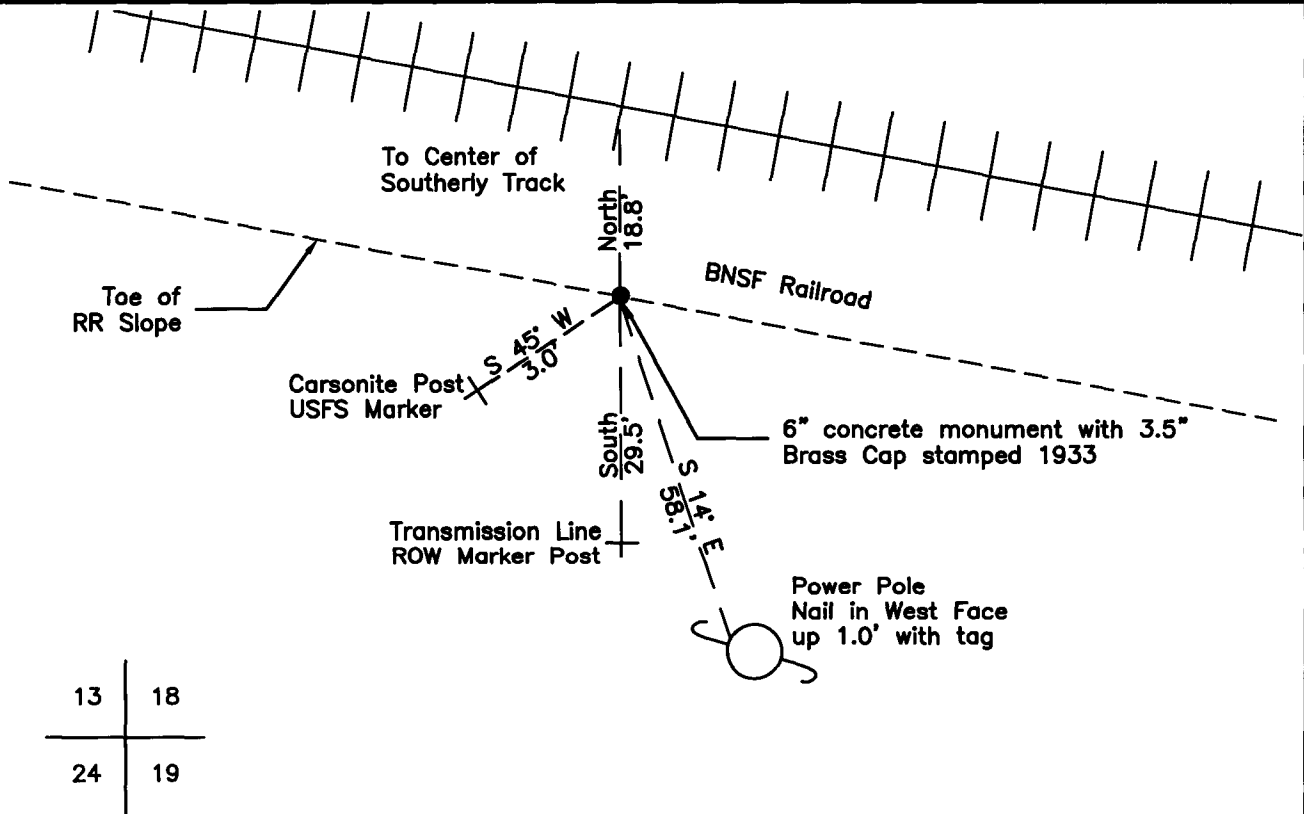
On 03/21/2010, found a(n): 6" concrete monument with a 3.5" Brass Cap stamped 1933, with U-Post on the N., S. and E faces holding the monument in place at the toe of slope of the RR grade

- left monument as found
- lowered monument
- removed monument (explain)
- raised monument

On \_\_\_\_\_, set a(n): \_\_\_\_\_

See "Statement of Evidence" for further details (on back)

(reserved for recording data)



### "SKETCH OF REFERENCE TIES" (not to scale - bearings are magnetic)

Ties are measured to center of monument unless otherwise noted.

UNITS =  Metric  English

UTM COORDINATES, ZONE 15

Northing: 17214367.450

Easting: 1289601.410

NAD 83/1996 Adjustment.

Obtained by RTK GPS observations.

I hereby certify that this survey, plan, or report was prepared by me or under my direct supervision, and that I am a duly Licensed Land Surveyor under the laws of the State of Minnesota.

*Ross Wamre*

signature

7/8/13

date

Ross Wamre, Minnesota License No. 45334





**STATEMENT OF EVIDENCE:** Section Corner common to Sections 13 and 24 of Township 145 North, Range 30 West of the 5<sup>th</sup> Principal Meridian and Sections 18 and 19 of Township 145 North, Range 29 West of the 5<sup>th</sup> Principal Meridian

**1874;** This corner was originally established by P.H. Conger for the Government Land Office. His field notes indicate a wood post set at this corner position, witnessed by:

Cedar 5" North 67° East, 24 links  
Cedar 5" North 47° West, 24 links  
Birch 7" South 64° West, 14 links  
Tamarack 7" South 42° East, 6 links

**1900;** U.S. Army Corps of Engineers recovered this corner according to Township 145 N Range 28 W flowage map for the Lake Winnibigoshish Reservoir. Map is on file at the USFS office in Cass Lake, MN.

**1933;** Resurvey by GLO, Willis W. Bandy as determined the intersection of original blazed lines to the N., S., and W. Set a brass tablet, 3.5" diameter, 3" stem, in a cylindrical concrete monument, 2' long, 6" diameter, 20" in the ground witnessed by:

Ash 9" South 48° East, 83 links  
Spruce 5" South 23 ¾° West, 49 links

**1961;** Both the Affidavit as to Location of Government Corner being filed with the Office of Register of Deeds, Cass County, Minnesota, as Affidavit No. 434 and the USFS notes Book 1 of Township 145 North, Range 30 West, page2, show that R.H. McDonald, while working for Peter J. Meyer, RLS #3628, found a brass capped monument witnessed by:

Ash 13" South 48° East, 54.78' scribe visible (1933 Tie)  
Balsam Windfall 5" South 23° West, 32.34' scribe visible (1933 Tie)  
Cedar 7" South 70° West, 70.4' marked: "S24 BT"  
Treated 4" x 4" x 6.5' Cedar Post South 11° West, 33'

**1981;** USFS notes Book 1 of Township 145 North, Range 30 West, page2, show that Brama and Hayes found a broken concrete monument. Top 8" of monument lying alongside of base, base appears to be undisturbed. The monument is at the base of the south embankment of RR witnessed by:

Found tag on Ash (1933 Tie) no measurement taken  
Found tag on Cedar (1961 Tie) no measurement taken  
Leaning Cedar Post (1961 Tie) no measurement taken

**1986;** USFS notes Book 1 of Township 145 North, Range 30 West, page2, show that Curtis Krause found and straightened the concrete cylinder base upright and place the top 12" of monument on the base. Then drove 3-4' pieces of steel sign post around the monument to stabilize with a rock around corner on the swamp side witnessed by:

Ash 16" South 48° East, 54.8' existing tag and paint (1933 Tie)  
Cedar 10" South 70° West, 70.4' existing tag and paint (1961 Tie)



Cedar 8" South 50° West, 54.55 scribed "S24 BT"  
8' FGSP North, 2.15' with boundary sign  
8' FGSP West, 2.80' with boundary sign

**1986;** Cass County Certificate of Survey Document No. 290583 shows that while performing a survey of National Forest Boundaries in a part of Section 13 of Township 145 North, Range 30 West in Cass County, MN, Kenneth L. Whitehorn, RLS #14677 recovered a stamped brass capped cylindrical concrete monument witnessed by:

Ash 16" South 48° East, 54.80' scribe overgrown (1933 Tie)  
Cedar 10" South 70° West, 70.70' scribe overgrown (1961 Tie)  
Cedar 8" South 50° West, 54.55'

**2007;** Cass County Certificate of Survey Document Nos. 3788 and 4032: a survey for Brian and Heather Brosdahl, show that Jeffrey P. Major RLS #44902, recovered a GLO/BLM monument at this corner location as part of a boundary survey in Section 13, T 145 N, R 30 W and Section 18 T 145 N, R 29 W.

**2010;** A Kadrmas, Lee & Jackson survey crew found a 6" concrete monument with a 3.5" brass cap standard GLO monument stamped 1933, with U-posts on the N., S. and E. faces of the monument holding it in place at the toe of slope of the Railroad Grade. Witnesses found and established as shown on the face of this certificate.

**2012;** Ross Wamre, RLS #45334, after analysis of record and survey information accepts this monument as the correct perpetuation of the corner.

Contacts pertaining to this corner are as follows:

Cass County Recorder's Office

Cass County Engineers Office

Cass County Surveyors Office

Northern Engineering and Consulting Inc.

United States Forest Service

MnDOT – District Office 2

Bureau of Indians Affairs – Bemidji

Bureau of Land Management's (BLM) Northeastern States Field Office