

CERTIFICATE OF LOCATION OF GOVERNMENT CORNER

East Quarter Corner of Section 13
 Township 145 N, Range 30 W, 5th P.M.
 STATE OF MINNESOTA, COUNTY OF CASS



A000601398

OFFICE OF THE COUNTY RECORDER
 CASS COUNTY, MINNESOTA
 CERTIFIED, FILED, AND/OR
 RECORDED ON

4/3/2014 11:30:09 AM

AS DOC #: A000601398

PAGES: 3

REC FEES: 0.00

KATHRYN M. NORBY
 CASS COUNTY RECORDER

BY SR Dep

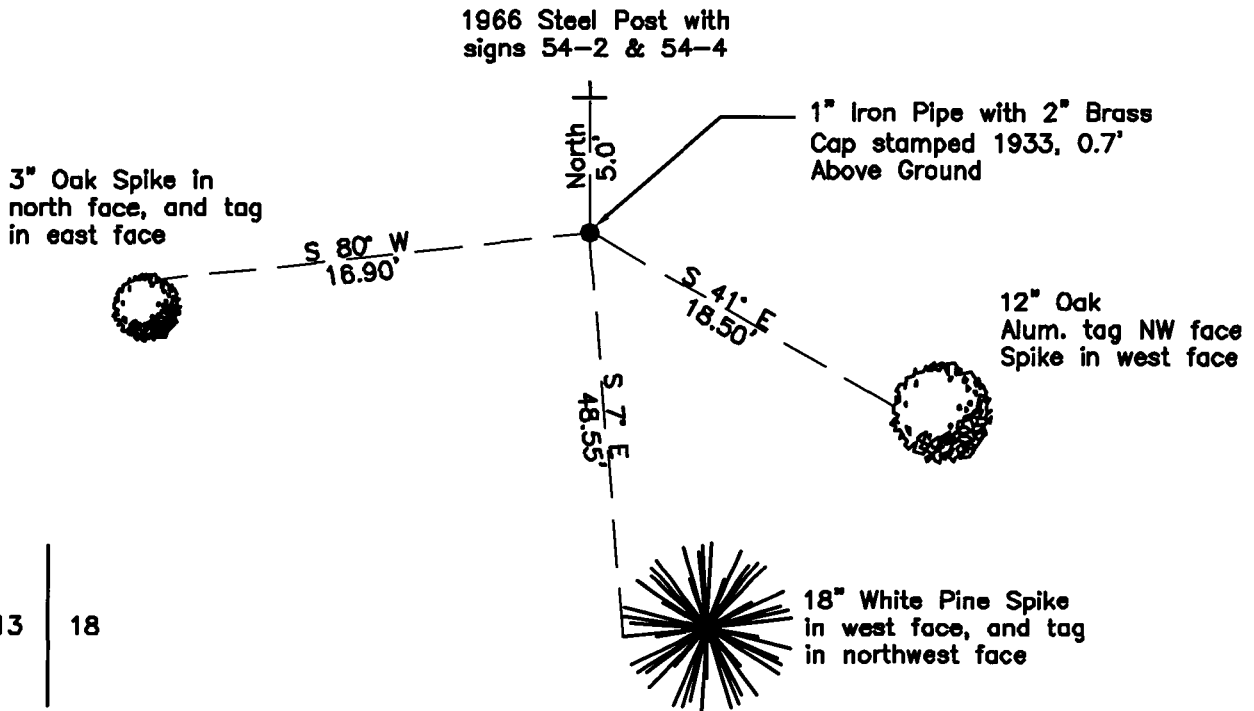
On 04/19/2010, found a(n): 1" Iron Pipe with a 2" Brass
Cap stamped 1933, 0.7' Above Ground

- left monument as found lowered monument
 removed monument (explain) raised monument

On _____, set a(n): _____

See "Statement of Evidence" for further details (on back)

(reserved for recording data)



"SKETCH OF REFERENCE TIES" (not to scale - bearings are magnetic)

Ties are measured to center of monument unless otherwise noted.

UNITS = Metric English

UTM COORDINATES, ZONE 15

Northing: 17217315.820

Easting: 1289681.144

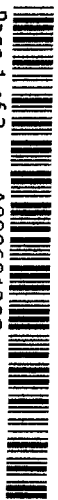
NAD 83/1996 Adjustment.
 Obtained by RTK GPS observations.

I hereby certify that this survey, plan, or report was prepared by me or under my direct supervision, and that I am a duly Licensed Land Surveyor under the laws of the State of Minnesota.

Ross Wamre
 signature

7/8/13
 date

Ross Wamre, Minnesota License No. 45334





STATEMENT OF EVIDENCE: Quarter Corner common to Section 13 of Township 145 North,
Range 30 and Section 18 of Township 145 North Range 29 West of the 5th
Principal Meridian

1874; This corner was originally established by P.H. Conger for the GLO. His field notes indicate a post set at this corner position, witnessed by:

Norway Pine 14" North 52° West, 9 links
White Pine 12" North 10° East, 14 links

1933; Resurvey by GLO, Willis W. Bandy, as determined from the original bearing trees, set an iron post, 3' long, 1" diameter, 28" into the ground with stamped Brass Cap and witnessed by:

Fallen White Pine 20" North 10° East, 14 links (1874 tie)
Dead Norway Pine 18" North 52° West, 9 links (1874 tie)

New BT's

Jack Pine 6" South 16° East, 170 links mkd. ¼ S 18 BT
Jack Pine 4" North 76¼° West, 78 links mkd. ¼ S 13 BT

1966; James Ebstrom, while working for W.H. Okerman, RLS #6807, USFS Book 1 of Township 145 North, Range 30 West, page 13, found monument in place with GLO 1933 BT's. An Affidavit as to Location of Government Corner is filed with the Cass County Office of Register of Deeds. Corner was re-witnessed as follows:

Jack Pine 10" South 16° East, 112.2' with scribe visible (1933 tie)
Jack Pine 12" North 76° West, 51.48' with scribe overgrown (1933 tie)

New BT's

Jack Pine 9" South 78° West, 18.4' scribed ¼ S13 BT
Jack Pine 7" South 53° West, 19.4' scribed ¼ S13 BT
72" Steel Sign, North, 5', with signs 54-2 & 54-4

1981; Krause, Hayes & Brama, USFS Book 1 of Township 145 North, Range 30 West, page 13, found an iron and cap, 10" above ground and witnessed.

Tree Stump, Southeast, (1933 tie)
Jack Pine 15" North 76° West, 51.5' (1933 tie)
Jack Pine (dead) 9" South 78° West, 18.4' (1966 tie)
Jack Pine 7" South 53° West, 19.4' (1966 tie)

New BT's

Jack Pine 8" North 78° West, 20.0'

2010; A Kadrmas, Lee & Jackson survey crew found a 2.5" Brass Cap GLO Monument on a ¾" Iron Pipe 0.7' above ground. Witnesses found and established as shown on the face of this certificate.

2012; Ross Wamre, RLS #45334, after analysis of record and survey information accepts this monument as the correct perpetuation of the corner.



Contacts pertaining to this corner are as follows:

- Cass County Recorder's Office
- Cass County Engineers Office
- Cass County Surveyors Office
- Northern Engineering and Consulting Inc.
- United States Forest Service
- MnDOT – District Office 2
- Bureau of Indians Affairs – Bemidji
- Bureau of Land Management's (BLM) Northeastern States Field Office