

CERTIFICATE OF LOCATION OF GOVERNMENT CORNER

East Quarter Corner of Section 23
Township 145 N , Range 30 W , 5th P.M.
STATE OF MINNESOTA, COUNTY OF CASS



A000601394

OFFICE OF THE COUNTY RECORDER
CASS COUNTY, MINNESOTA
CERTIFIED, FILED, AND/OR
RECORDED ON

4/3/2014 11:30:05 AM

AS DOC #: A000601394

PAGES: 2

REC FEES: 0.00

KATHRYN M. NORBY
CASS COUNTY RECORDER

BY SR _____ Dep

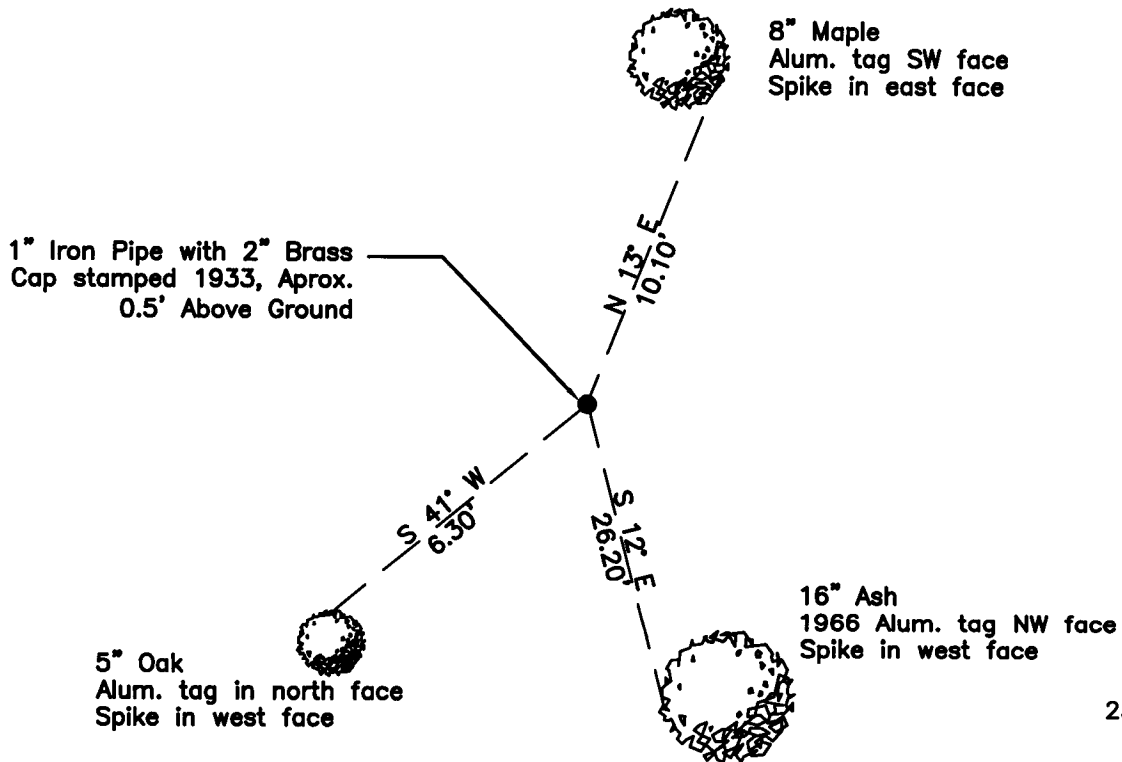
On 04/27/2010, found a(n): 1" Iron Pipe with a 2" Brass
DATE
Cap stamped 1933, Aprox. 0.5' Above Ground

- left monument as found
- lowered monument
- removed monument (explain)
- raised monument

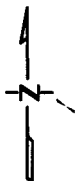
On _____, set a(n): _____
DATE

See "Statement of Evidence" for further details (on back)

(reserved for recording data)



23 24



"SKETCH OF REFERENCE TIES" (not to scale - bearings are magnetic)

Ties are measured to center of monument unless otherwise noted.

UNITS = Metric English

UTM COORDINATES, ZONE 15

Northing: 17211867.160

Easting: 1284356.486

NAD 83/1996 Adjustment.

Obtained by RTK GPS observations.

I hereby certify that this survey, plan, or report was prepared by me or under my direct supervision, and that I am a duly Licensed Land Surveyor under the laws of the State of Minnesota.

Ross Wamre
signature

7/8/13
date

Ross Wamre, Minnesota License No. 45334

Page 1 of 2
A000601394





STATEMENT OF EVIDENCE: Quarter Corner common to Sections 23 and 24 of Township 145 North, Range 30 West of the 5th Principal Meridian

1874; This corner was originally established by P.H. Conger for the GLO. His field notes indicate a wood post set at this corner position, witnessed by:

Aspen 2 ½" North 30° West, 25 links
Aspen 3" South 87° East, 62 links

1915; The GLO supplemental plat showing the subdivisions of lot 4, section 24, T 145 N, R 30 W, 5th P.M. shows a section breakdown for section 24 (W ¼ corner of Sec 24 is the E ¼ of Sec 23)

1928; N.C. Davis, Forest Ranger, USFS 874 forms, found a 3" Elm Post marked ¼ S witnessed. Information on file with the USFS office in Cass Lake.

Poplar 10" South 50° West – mkd ¼ S BT
Poplar 16" North 72° East – mkd ¼ S BT

1933; Resurvey by GLO, Willis W. Bandy, determined position from remains of original bearing trees. Set an iron post, 3' long, 1" diameter, 27" in the ground with a stamped brass cap, witnessed by:

Aspen 8" South 87° East, 62 links (1874 tie)
Aspen 5" South 47° East, 9 links
Aspen 5" North 5 ½° West, 16 links

1936; Harold Hannes, USFS 874 forms, found a metal pipe 3" above ground. Information on file with the USFS office in Cass Lake.

1966; Willian H. Okerman, RLS #6807, and James Ekstrom, USFS Book 2 of Township 145 North, Range 30 West, page 18, found monument in place but found no evidence of original or resurvey bearing trees. An Affidavit as to Location of Government Corner is on file with the Cass County Office of Register of Deeds. Corner witnessed by:

Elm 12" South 69° East, 124.0' scribed ¼ S 24 BT
Ash 7" South 12° East, 26.2' scribed ¼ S 24 BT

2010; A Kadrmas, Lee & Jackson survey crew found a 1" Iron Pipe with a 2" brass cap standard GLO monument stamped 1933, approximately 0.5' above ground. Witnesses found and established as shown on the face of this certificate.

2012; Ross Wamre, RLS #45334, after analysis of record and survey information accepts this monument as the correct perpetuation of the corner.

Contacts pertaining to this corner are as follows:

Cass County Recorder's Office
Cass County Surveyors Office
United States Forest Service

Cass County Engineers Office
Northern Engineering and Consulting Inc.
MnDOT – District Office 2