



A000601378

OFFICE OF THE COUNTY RECORDER
CASS COUNTY, MINNESOTA
CERTIFIED, FILED, AND/OR
RECORDED ON

4/3/2014 11:29:49 AM

AS DOC #: A000601378

PAGES: 2

REC FEES: 0.00

KATHRYN M. NORBY
CASS COUNTY RECORDER

BY SR _____ Dep

Index No. A-13

CERTIFICATE OF LOCATION OF GOVERNMENT CORNER

Northeast Corner of Section 4
Township 144 N, Range 26 W, 5th P.M.
STATE OF MINNESOTA, COUNTY OF CASS

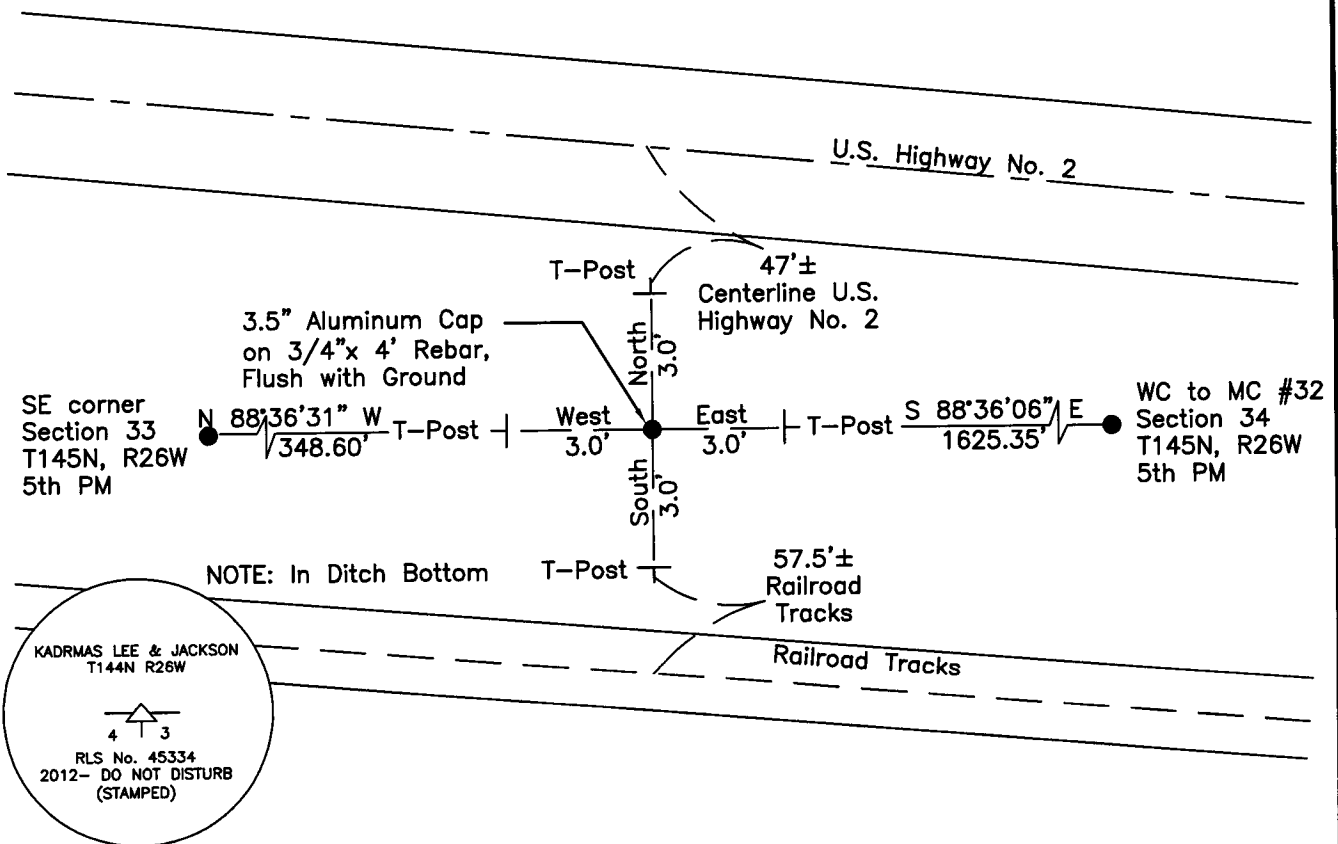
On _____, found a(n): _____
DATE

- left monument as found
- lowered monument
- removed monument (explain)
- raised monument

On 3/1/2012, set a(n): 3.5" Aluminum Cap on 3/4"x 4'
Rebar. Flush with Ground
DATE

See "Statement of Evidence" for further details (on back)

(reserved for recording data)



"SKETCH OF REFERENCE TIES"
(not to scale - bearings are magnetic)

Ties are measured to center of monument unless otherwise noted.

UNITS = Metric English

UTM COORDINATES, ZONE 15
 Northing: 17197298.110
 Easting: 1400943.094

NAD 83/1996 Adjustment.
 Obtained by RTK GPS observations.

I hereby certify that this survey, plan, or report was prepared by me or under my direct supervision, and that I am a duly Licensed Land Surveyor under the laws of the State of Minnesota.

Ross Wamre 3/24/14
 signature date

Ross Wamre, Minnesota License No. 45334

Page 1 of 2
A000601378



STATEMENT OF EVIDENCE: Closing Corner common to Sections 3 and 4 of Township 144 North, Range 26 West of the 5th Principal Meridian

- 1873;** This corner was originally established by Benjamin C. Baldwin for the Government Land Office. His notes indicate that a post was set at this position, no ties were available.

- 1898;** Railroad Right-of-Way Index map file 1804 indicates this closing corner recovered with a tie to the standard corner of Sections 33 & 34 in Township 145 North, Range 45 West. Map is on file with the Minnesota Department of Transportation.

- 1923;** State of Minnesota Department of Highway Right-of-Way Index map file 1-68 indicates this closing corner recovered with a tie to the standard corner of Sections 33 & 34 in Township 145 North, Range 45 West. Map is on file with the Minnesota Department of Transportation.

- 1929;** Edward Iverson, Estimator, USFS 874 forms, indicates corner to be at the right location, but doesn't show what was found , set a BT on a Telegraph Pole, Southwest from corner.

- 1938;** State of Minnesota Department of Highway Right-of-Way Index map file 30-60A indicates this closing corner recovered with a tie to the standard corner of Sections 33 & 34 in Township 145 North, Range 45 West. Map is on file with the Minnesota Department of Transportation.

- 1953;** R.W. Fassett, Resurvey of 1953, USFS 874 forms, indicate corner is marked by treated post scribed "FSSC ¾" at north base of R.R. fill an about 1/2 chain south of telephone pole# 4129 FSLP tag on pole 4129.

- 2010;** A Kadrmas, Lee & Jackson survey crew found no evidence in a search of this corner location.

- 2012;** Ross Wamre, RLS #45334, set a 3.5" stamped Aluminum Cap on ¾" x 4' rebar, flush with ground, on the standard parallel, as proportioned according to the original GLO distances between the calculated location of MC #32 of Section 34-145-26 using the WC to MC #32 as established by Dennis Warner, Cass County Certificate of Location A00581299, and the calculated location of the SE Corner of Section 33-145-26. Ties shown by the State of Minnesota Department of Highway Right-of-Way Index map file 1-68, State of Minnesota Department of Highway Right-of-Way Index map file 30-60A & Railroad Right-of-Way Index map file 1804 are inconsistent graphically and mathematically as to the location of this corner. Witnesses found and established as shown on the face of this certificate.

Contacts pertaining to this corner are as follows:

- Cass County Recorder's Office
- Cass County Engineers Office
- Cass County Surveyors Office
- Northern Engineering and Consulting Inc.
- United States Forest Service
- MnDOT – District Office 2
- Bureau of Indians Affairs – Bemidji
- Bureau of Land Management's (BLM) Northeastern States Field Office