



A000601376

OFFICE OF THE COUNTY RECORDER
CASS COUNTY, MINNESOTA
CERTIFIED, FILED, AND/OR
RECORDED ON

4/3/2014 11:29:47 AM

AS DOC #: A000601376

PAGES: 2

REC FEES: 0.00

KATHRYN M. NORBY
CASS COUNTY RECORDER

BY SR _____ Dep

Index No. Z-17

CERTIFICATE OF LOCATION OF GOVERNMENT CORNER

Standard Southeast Corner of Section 34
Township 145 N , Range 27 W , 5th P.M.
STATE OF MINNESOTA, COUNTY OF CASS

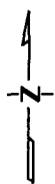
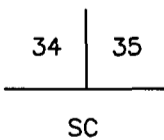
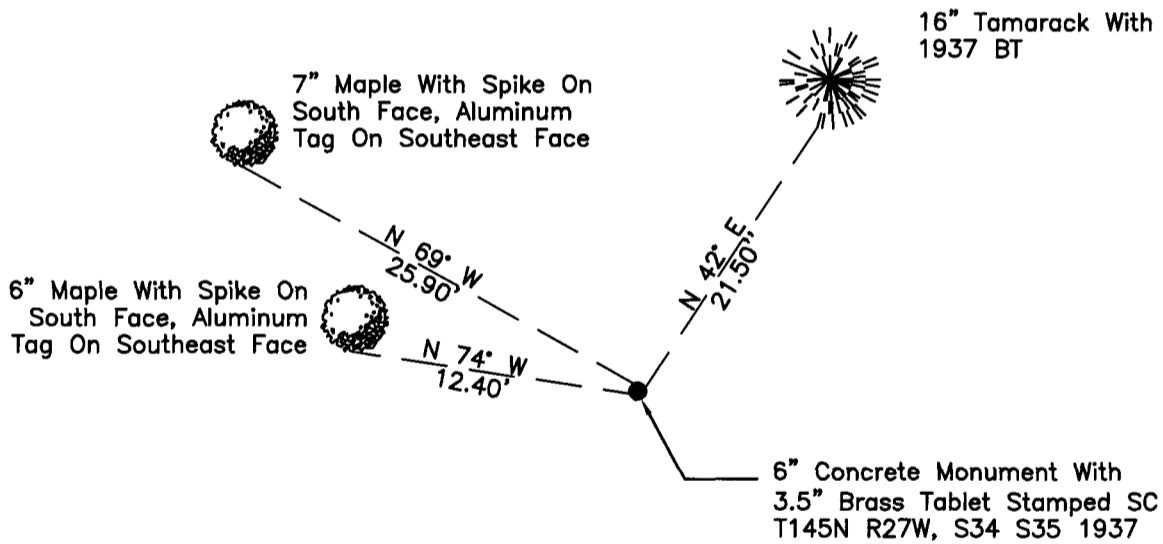
On 06/01/2010 , found a(n): 6" Concrete Monument With 3.5"
DATE
Brass Tablet Stamped SC T145N R27W. S34 S35 1937

left monument as found lowered monument
 removed monument (explain) raised monument

On _____ , set a(n): _____
DATE

See "Statement of Evidence" for further details (on back)

(reserved for recording data)



"SKETCH OF REFERENCE TIES" (not to scale - bearings are magnetic)

Ties are measured to center of monument unless otherwise noted.

UNITS = Metric English

UTM COORDINATES, ZONE 15

Northing: 17197688.200

Easting: 1374167.569

NAD 83/1996 HARN Adjustment.

I hereby certify that this survey, plan, or report was prepared by me or under my direct supervision, and that I am a duly Licensed Land Surveyor under the laws of the State of Minnesota.

Ross Wamre
signature

3/24/14
date

Ross Wamre, Minnesota License No. 45334

Page 1 of 2 A000601376





STATEMENT OF EVIDENCE: Standard Corner common to Sections 34 and 35 of Township 145 North, Range 27 West of the 5th Principal Meridian.

1871; G.R. Stuntz, for the Government Land Office established this corner and witnessed by

Yellow Pine 12" North 30° East, 157 Links
Yellow Pine 10" North 53° West, 75 Links

1937; GLO dependent resurvey of the Eleventh Standard Parallel North, along the South boundary of Township 145 North, through a portion of Range 26 West and through Range 27 West, 5th Principal Meridian. Hal D. Craig, found no remaining evidence of the original standard corner reestablished this corner's position by proportionate measure and set a 6" dia. concrete monument, 20" in the ground, with a 3 ½" dia. brass tablet marked SC T145N R27W S34 S35 1937, and witnessed by:

Tamarack 8" North 42° East, 33 Links, marked SC T145N R27W S35 BT
Norway Pine 14" North 52° West, 90 Links, marked SC T145N R27W S34 BT

1965; USFS notes Book 1 of Township 145 North, Range 27 West, page 70, show that James Ekstrom found GLO brass tablet marked SC T145N R27W S34 S35 1937 in good condition witnessed by:

Tamarack 10" North 42° East, 21.78' (1937 Tie)
Norway Pine 14" North 52° West, 59.40' scribe overgrown (1937 Tie)

2010; A Kadrmas, Lee, & Jackson survey crew found a 6" dia. concrete monument with a 3" brass tablet marked SC T145N R27W S34 S35 1937, witnesses found and established as shown on the face of this certificate.

2012; Ross Wamre, RLS #45334, after analysis of record and survey information accepts this monument as the correct perpetuation of the corner.

Contacts pertaining to this corner are as follows:

- Cass County Recorder's Office
- Cass County Engineers Office
- Cass County Surveyors Office
- Northern Engineering and Consulting Inc.
- United States Forest Service
- MnDOT – District Office 2
- Bureau of Indians Affairs – Bemidji
- Bureau of Land Management's (BLM) Northeastern States Field Office