



A000601375

OFFICE OF THE COUNTY RECORDER  
CASS COUNTY, MINNESOTA  
CERTIFIED, FILED, AND/OR  
RECORDED ON

4/3/2014 11:29:46 AM

AS DOC #: A000601375

PAGES: 2

REC FEES: 0.00

KATHRYN M. NORBY  
CASS COUNTY RECORDER

BY SR \_\_\_\_\_ Dep

Index No. X-21

# CERTIFICATE OF LOCATION OF GOVERNMENT CORNER

East Quarter \_\_\_\_\_ Corner of Section 35  
Township 145 N, Range 27 W, 5th P.M.  
STATE OF MINNESOTA, COUNTY OF CASS

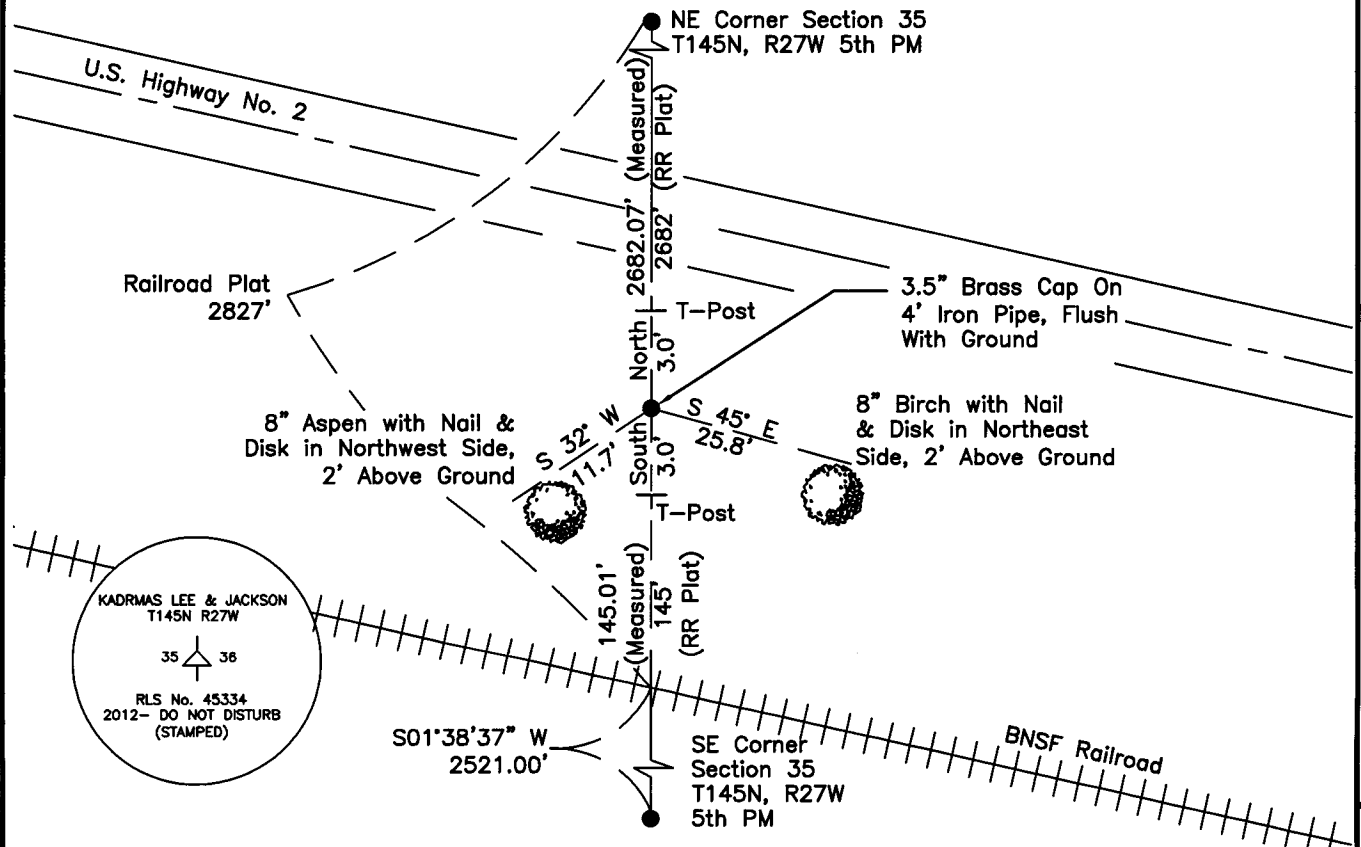
On \_\_\_\_\_, found a(n): \_\_\_\_\_  
DATE

- left monument as found
- lowered monument
- removed monument (explain)
- raised monument

On 2/22/2012, set a(n): 3.5 Brass Cap on 4' Iron Pipe,  
DATE  
Flush with Ground

See "Statement of Evidence" for further details (on back)

(reserved for recording data)



"SKETCH OF REFERENCE TIES"  
(not to scale - bearings are magnetic)

Ties are measured to center of monument unless otherwise noted.

UNITS =  Metric  English

UTM COORDINATES, ZONE 15  
 Northing: 17200264.840  
 Easting: 1379504.021

NAD 83/1996 Adjustment.  
 Obtained by RTK GPS observations.

I hereby certify that this survey, plan, or report was prepared by me or under my direct supervision, and that I am a duly Licensed Land Surveyor under the laws of the State of Minnesota.

Ross Wamre signature      3/24/14 date  
 Ross Wamre, Minnesota License No. 45334

Page 1 of 2  
A000601375



**STATEMENT OF EVIDENCE:** Quarter Corner common to Sections 35 and 36 of Township 145 North,  
Range 27 West of the 5<sup>th</sup> Principal Meridian.

**1873;** This corner was originally established by P.H. Conger for the GLO. His field notes indicate that this corner position was marked with a post and witnessed by:

Jack Pine 3" South 19° West, 38 Links  
Jack Pine 4" North 10° West, 80 Links

**1898;** Great Northern Railroad Right-of-Way Plat 1804CS7 shows a distance tie to this corner location of 145'. Information is on file with the Minnesota Department of Transportation.

**1946;** State of Minnesota Department of Highways Right-of-Way Map Index file 1-68\_001 shows a distance tie to this corner location. Information is on file with the Minnesota Department of Transportation.

**2010;** A Kadrmas, Lee & Jackson survey crew found no evidence of this corner location.

**2012;** Ross Wamre, RLS #45334, after analysis of record and survey information set a 2"x 48" Iron pipe with a 3 ½" stamped brass cap at proportionate measure between the Southeast Standard Corner of Section 35 and the Northeast Corner of Section 35 according to measurements from the Great Northern Railroad Right-of-Way Plat. Witnesses found and established as shown on the face of this certificate.

Contacts pertaining to this corner are as follows:

Cass County Recorder's Office  
Cass County Engineers Office  
Cass County Surveyors Office  
Northern Engineering and Consulting Inc.  
United States Forest Service  
MnDOT – District Office 2  
Bureau of Indians Affairs – Bemidji  
Bureau of Land Management's (BLM) Northeastern States Field Office